

PUBLIC LAND SURVEY MONUMENT RECORD

TYPE OF MONUMENT: 3/4" IRON ROD
ADAMS COUNTY COORDINATES, NAD 83 (2007)

N. 170018.849

E. 520572.966

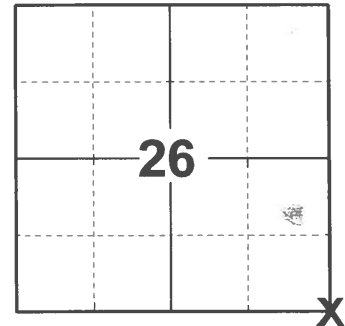
ELEVATION- _____ DATUM _____

FIELD WORK DATE: 02/11/2021

BASIS FOR MONUMENT LOCATION

1978 - PLS 878 FOUND 3/4" IRON ROD SET BY DAVID CLARK IN MY OF 1972. THIS BAR HAS BEEN USED FOR SURVEYS IN SECTIONS 26 & 35, 16-5. THE BAR WAS ACCEPTED AS THE CORNER. THE CORNER FALLS IMMEDIATELY ADJACENT TO AN EXISTING FENCE CORNER MAKING IT IMPOSSIBLE TO SET A HARRISON MONUMENT.

2021 - PLS 2675 FOUND 3/4" IRON ROD FLUSH WITH THE GROUND AND 3 WITNESSES. THE MONUMENT AGREES WITH ALL THE WITNESSES. ACCEPTED THE 3/4" IRON ROD AS THE CORNER LOCATION. SET 4 NEW TIES AND MEASURED TO THE EXISTING WITNESSES.



LOCATION

(INDICATE CORNER BY "X")

SEAL:

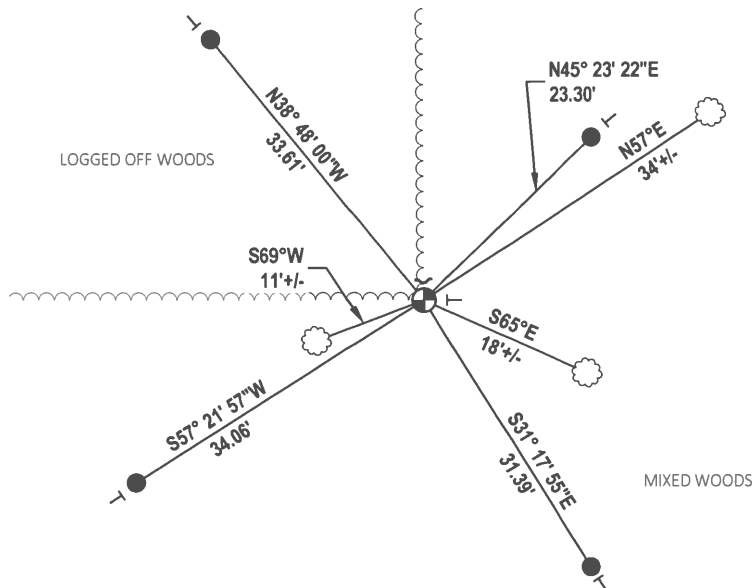
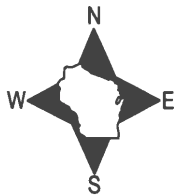


DATA SHOWN HERE ON THIS TIE SHEET IS CORRECT AND COMPLETE TO THE BEST OF MY KNOWLEDGE AND BELIEF.

PROFESSIONAL LAND SURVEYOR

DATE 3/3/2021

TIE SKETCH



LOGGED OFF WOODS

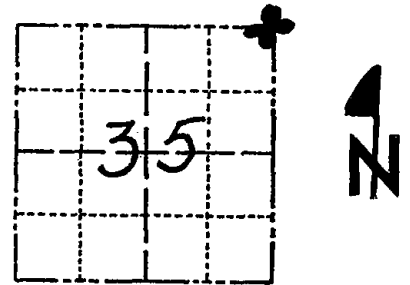
MIXED WOODS

- SET 3/4" x 18" IRON REBAR, 1.50#/FT
- ⊕ FOUND 3/4" IRON ROD MONUMENT
- ~ STEEL FENCE POST
- VINYL "T" POST
- ⊙ WITNESS TREE

Government Land Corner Certificate

ADAMS County
 TYPE OF MONUMENT: 1/2" REBAR
 STATE PLANE COORDINATES: N _____
 E _____
 ELEVATION — M.S.L. DATUM: _____
 THETA ANGLE: _____
 FIELD BOOK: 57 PAGE 72
 DRAWN BY: B. MERZ

CORNER NO. 111
 SECTION 35
 TOWN 16
 RANGE 5



LOCATION
(Indicated by 'X')

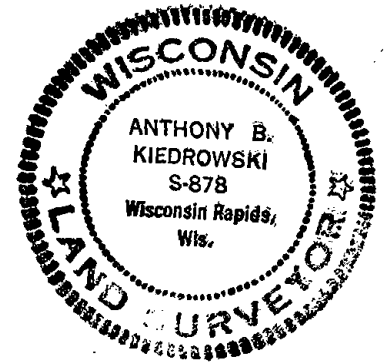
BASIS FOR MONUMENT LOCATION

Show info such as: History of corner, with reference to Vol. and pg., dates, surveyor; exact description of monument replaced; if location computed, by taped or EDM traverse; landowner remarks, etc. (Use reverse side if necessary)

Found 3/4" iron rod set by David Clark in May of 1972. This bar has been used for surveys in Sections 26 & 35 16-5.

The bar was accepted as the corner.
 The corner falls immediately adjacent to an existing fence corner making it impossible to set a harrison monument.

SEAL:



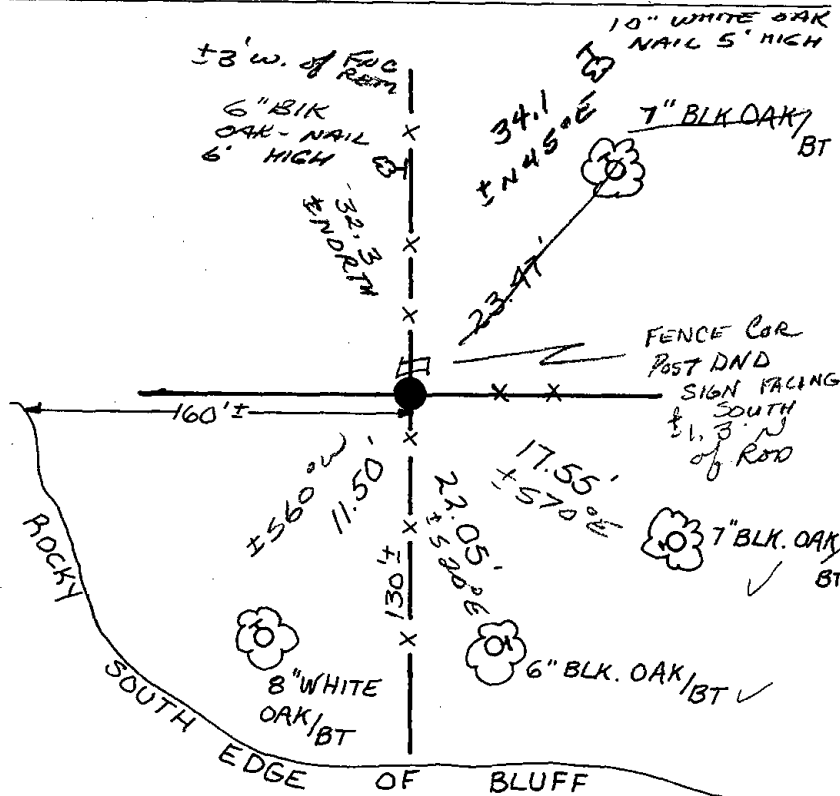
DATA SHOWN HERE ON
CERTIFIED CORRECT:

Anthony B. Kiedrowski
Registered Land Surveyor

DATE: 8-1-78

TIE SKETCH

Show at least four ties, also fence lines, roads, topo, size and type of witness trees' and if off road - best way to arrive at corner.



MAINTENANCE RECORD

Date	Init.	Remarks
10/6/80	KU-SK	COR. OK
2-15-90	KZ-GR	OK
2-7-95	JG	OK
12-31-80	SS	"
12-21-05	JG	"
12-20-10	SS	2 NEW TIE