

PUBLIC LAND SURVEY MONUMENT RECORD

TYPE OF MONUMENT: SURVEY NAIL
 ADAMS COUNTY COORDINATES, NAD 83 (2007)

N. 167357.789

E. 509986.345

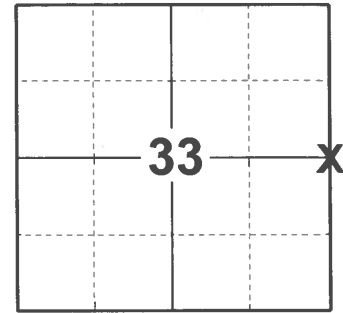
ELEVATION- _____ DATUM _____

FIELD WORK DATE: 02/24/2021

BASIS FOR MONUMENT LOCATION

1980 - PLS 605 AREA PREVIOUSLY DUG BY ADAMS COUNTY SURVEYOR. CORNER ESTABLISHED BY SECTION PROTRACTION. INTERIOR CORNER BEING THE SW CORNER OF THE NE1/4 OF THE NE1/4 FITS THE FENCE CORNER AS IT NOW EXISTS.

2021 - PLS 2675 FOUND MAG NAIL IN ROAD SURFACE, REMOVED, AND FOUND NO ADDITIONAL MONUMENTS BELOW. FOUND 2 WITNESS TREES. THE MAG NAIL LOCATION AGREES WITH BOTH WITNESS TREES. ACCEPTED THE MAG NAIL LOCATION AS THE CORNER. SET A SURVEY NAIL IN THE MAG NAIL LOCATION, 4 NEW TIES AND MEASURED TO THE EXISTING WITNESS TREES.



LOCATION

(INDICATE CORNER BY "X")

SEAL:



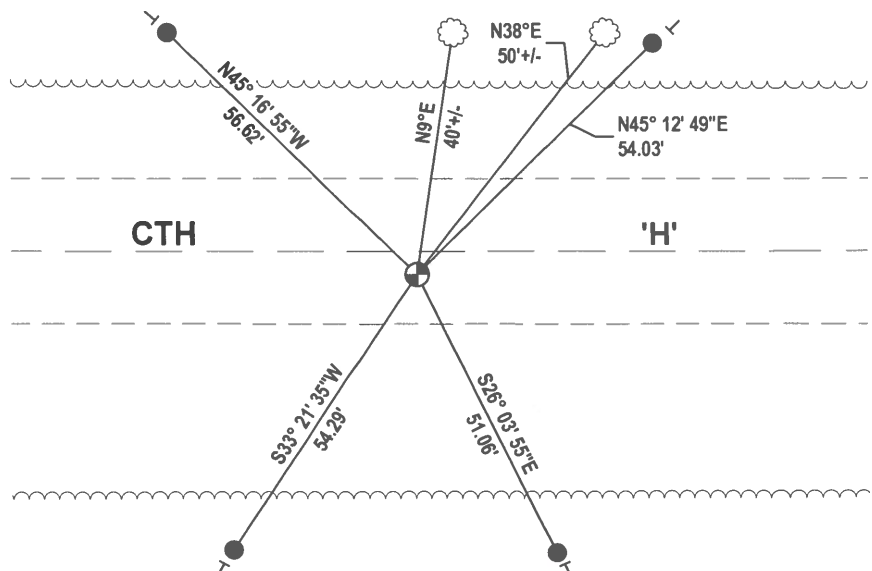
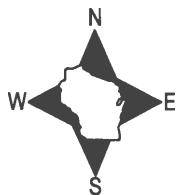
DATA SHOWN HERE ON THIS TIE SHEET IS CORRECT AND COMPLETE TO THE BEST OF MY KNOWLEDGE AND BELIEF.

PROFESSIONAL LAND SURVEYOR

DATE 3/3/2021

TIE SKETCH

NOTE: THE CORNER LANDS 4'± SOUTH OF CTH 'H' CENTERLINE.



- SET 3/4" x 18" IRON REBAR, 1.50#/FT
- ⊕ SET SURVEY NAIL MONUMENT
- ┆ VINYL "T" POST
- ☼ WITNESS TREE

Adams

JUNEAU COUNTY

Survey Monument Record

TYPE OF MONUMENT: Harrison MacNan

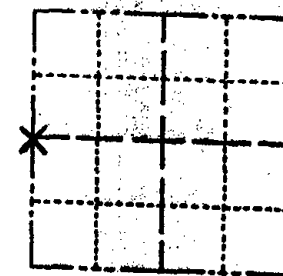
STATE PLANE COORDINATES: N _____
E _____

ELEVATION — M.S.L. DATUM: _____

THETA ANGLE: _____

FIELD BOOK: _____ PAGE _____

CORNER NO. 117
SECTION 34
TOWN 16 N
RANGE 5 E



LOCATION
(Indicated by 'X')

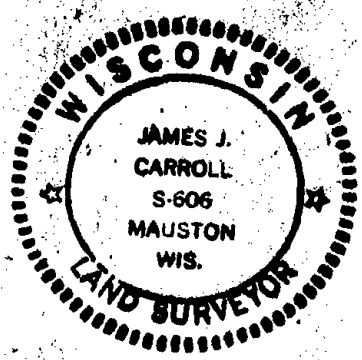
BASIS FOR MONUMENT LOCATION

(Use reverse side if necessary)

Show info such as: History of corner, with reference to Vol. and pg. dates, surveyor; exact description of monument replaced; if location computed, by taped or EDM traverse; landowner remarks, etc.

Area previously dug by Adams County Surveyor. Corner established by section protraction. Exterior corner being the SW corner of the NE 1/4 of the NE 1/4 fits the fence corner as it now exists.

SEAL:



CERTIFIED CORRECT:

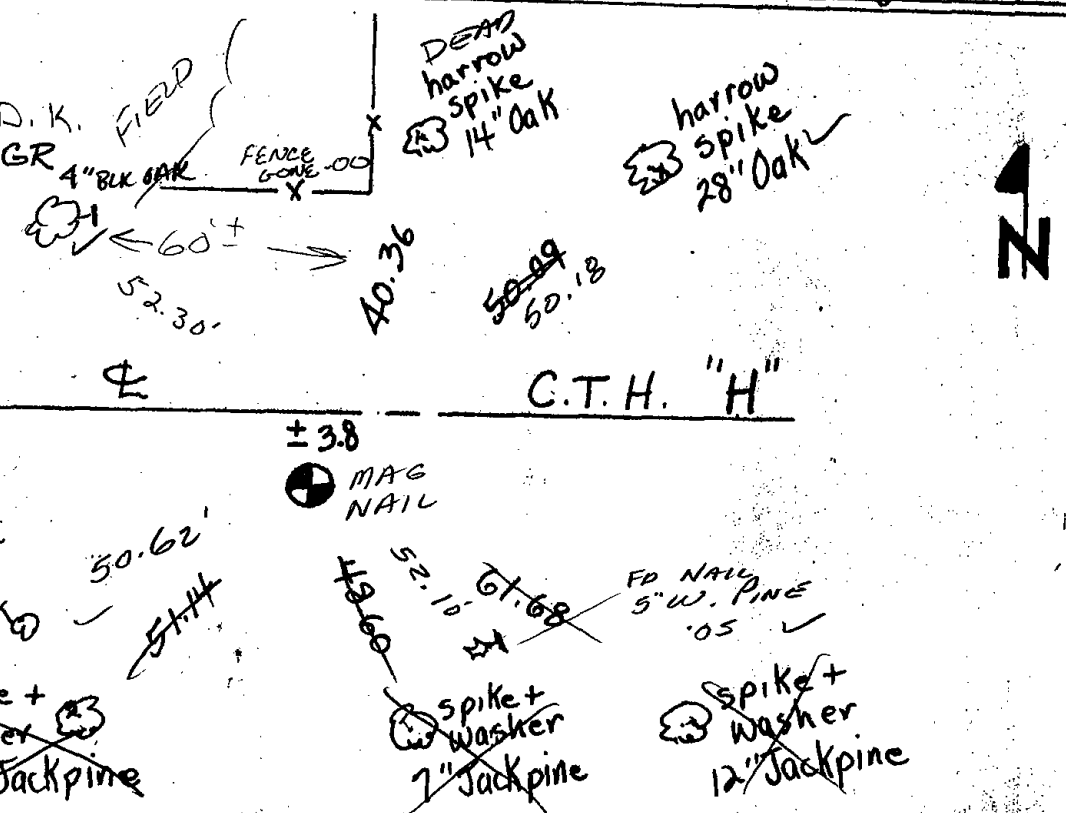
James J. Carroll
Registered Land Surveyor

DATE: May 22, 1980

TIE SKETCH

(Show at least four ties)

- ALL OK 4/15/85 D.K.
- ALL OK 2-15-90 KZ-GR
- " 2-7-95 JG
- ALL OK 2-10-00 T.W.S.S.
- ADD 2 3-4-05 JS-SS
- TIE OK 12-20-10



Adams

~~JUNEAU~~ COUNTY

Survey Monument Record

TYPE OF MONUMENT: Harrison

STATE PLANE COORDINATES: N _____

E _____

ELEVATION — M.S.L. DATUM: _____

THETA ANGLE: _____

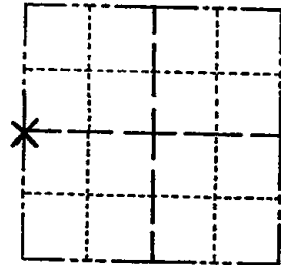
FIELD BOOK: _____ PAGE _____

CORNER NO. _____

SECTION 34

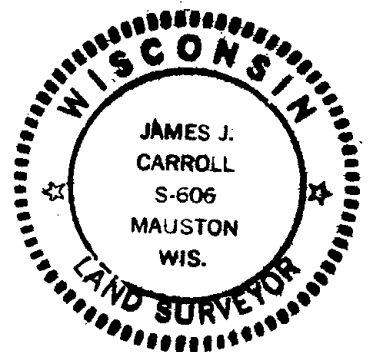
TOWN 16 N

RANGE 5 E



LOCATION
(Indicated by 'X')

SEAL:



BASIS FOR MONUMENT LOCATION

(Use reverse side if necessary)

Show info such as: History of corner, with reference to Vol. and pg, dates, surveyor; exact description of monument replaced; if location computed, by taped or EDM traverse; landowner remarks, etc.

Area previously dug by Adams County Surveyor. Corner established by section protraction. Exterior corner being the SW corner of the NE 1/4 of the NE 1/4 fits the fence corner as it now exists.

CERTIFIED CORRECT:

James J. Carroll
Registered Land Surveyor
DATE: May 22, 1980

TIE SKETCH

(Show at least four ties)

