

## PUBLIC LAND SURVEY MONUMENT RECORD

TYPE OF MONUMENT: SURVEY NAIL  
 ADAMS COUNTY COORDINATES, NAD 83 (2007)

N. 167352.418

E. 515273.823

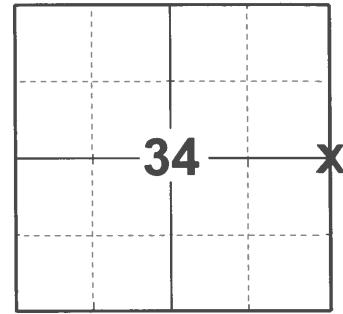
ELEVATION- - - - DATUM - - - -

FIELD WORK DATE: 02/24/2021

### BASIS FOR MONUMENT LOCATION

1976 - PLS 1103 RAN TRAVERSE (EDM/T2) AROUND SOUTH HALF OF SECTION 35 TO DETERMINE SEARCH AREAS. FOUND 16" END OF BUGGY AXLE LOCATION SHOWN ON SKETCH. ACCEPTED AS CORNER THOUGH NO RECORD OF AXLE OR EXISTING WITNESS MONUMENTS WERE FOUND. REPLACED WITH HARRISON MONUMENT.

2021 - PLS 2675 FOUND PK NAIL IN THE ROAD SURFACE, REMOVED AND FOUND NO OTHER MONUMENTS BELOW. THE CORNER AGREES WITH SECTION SUMMARY DISTANCES FROM THE NE TO E1/4 AND SE TO THE E1/4. ACCEPTED THE PK NAIL LOCATION FOR THE CORNER. SET A SURVEY NAIL IN THE PK NAIL LOCATION AND SET 4 NEW TIES.



LOCATION

(INDICATE CORNER BY "X")

SEAL:



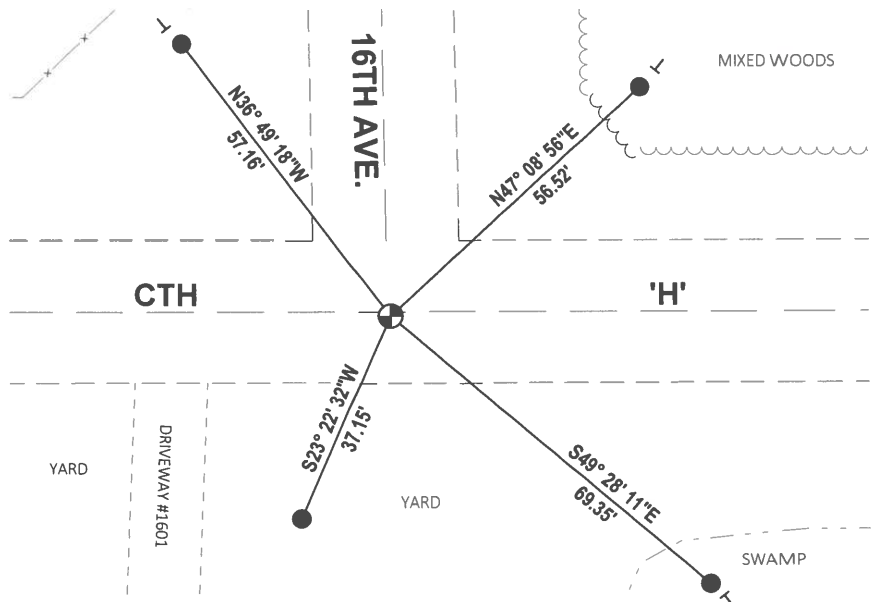
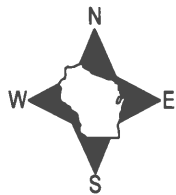
DATA SHOWN HERE ON THIS TIE SHEET IS CORRECT AND COMPLETE TO THE BEST OF MY KNOWLEDGE AND BELIEF.

PROFESSIONAL LAND SURVEYOR

DATE 3/3/2021

### TIE SKETCH

NOTE: THE CORNER LANDS 1/2 SOUTH OF CTH 'H' CENTERLINE AND 1/2 EAST OF 16TH AVE. CENTERLINE.



- SET 3/4" x 18" IRON REBAR, 1.50#/FT
- ⊕ SET SURVEY NAIL MONUMENT
- ┆ VINYL "T" POST

ADAMS COUNTY

Survey Monument Record

MAG NAIL

TYPE OF MONUMENT: ~~30" HARRISON MONUMENT~~

STATE PLANE COORDINATES: N \_\_\_\_\_  
E \_\_\_\_\_

ELEVATION — M.S.L. DATUM: \_\_\_\_\_

THETA ANGLE: \_\_\_\_\_

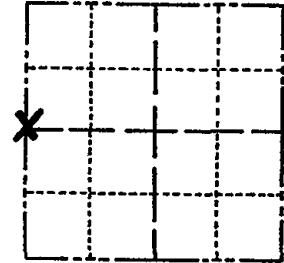
FIELD BOOK: \_\_\_\_\_ PAGE \_\_\_\_\_

CORNER NO. 1017 (118)

SECTION 35

TOWN 16

RANGE 5



LOCATION  
(Indicated by 'X')

SEAL:

BASIS FOR MONUMENT LOCATION

(Use reverse side if necessary)

Show info such as: History of corner, with reference to Vol. and pg, dates, surveyor; exact description of monument replaced; if location computed, by taped or EDM traverse; landowner remarks, etc.

Ran traverse (EDM/T2) around South Half of Section 35 to determine search areas.

Found 14" end of buggy axel at location shown on sketch. Accepted as corner though no record of axel or existing witness monuments was found.

Replaced with Harrison Monument.

COR OK 10/6/80 KV-SK

ALL OK 4/15/85 D.K.

ALL OK 2-15-90 KZ-GR

1-NEW 2-7-95-JG

ALL OK 2-10-00 T.W.SS.

1 GONE 2 NEW 3-4-05 SSJS

FO NAIL OK 12-20-10 SS



CERTIFIED CORRECT:

*Dale C. Hagen*  
Registered Land Surveyor

DATE: Sept. 16, 1976

TIE SKETCH

(Show at least four ties)

NOTE:

Ties in trees to nail in disc.

