

## PUBLIC LAND SURVEY MONUMENT RECORD

TYPE OF MONUMENT: 3/4" X 18" IRON REBAR, 1.50#/FT  
ADAMS COUNTY COORDINATES, NAD 83 (2007)

N. 167384.354

E. 520577.235

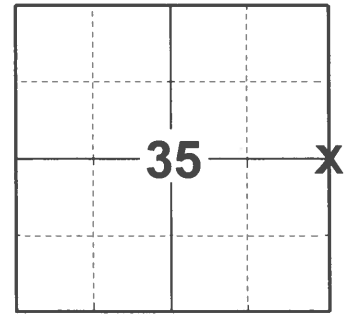
ELEVATION- - - - DATUM - - - -

FIELD WORK DATE: 02/24/2021

### BASIS FOR MONUMENT LOCATION

1976 - PLS 1103 RAN EDM/T2 TRAVERSE AROUND THE SOUTH HALF OF SECTION 35 TO DETERMINE SEARCH AREAS FOR INVESTIGATION. RETRACED SURVEY BY AL SCHNEIDER INTERSECTION 35, WITH RESULTING LOCATION FALLING 33 FEET NORTH OF AN EXISTING CONCRETE MONUMENT. MONUMENTED LOCATION WITH HARRISON MONUMENT.

2021 - PLS 2675 FOUND 2 PK NAILS IN THE ROAD SURFACE, REMOVED AND FOUND NO ADDITIONAL MONUMENTS BELOW, AND 3 TIES. BOTH PK NAILS AGREE WITH ALL EXISTING TIES. ACCEPTED THE NAILS LOCATION FOR THE CORNER. SET A 3/4" X 18" IRON REBAR, 1.50#/FT IN THE NAILS LOCATION. SET 1 NEW TIE AND MEASURED TO THE EXISTING TIES.



**LOCATION**

(INDICATE CORNER BY "X")

SEAL:



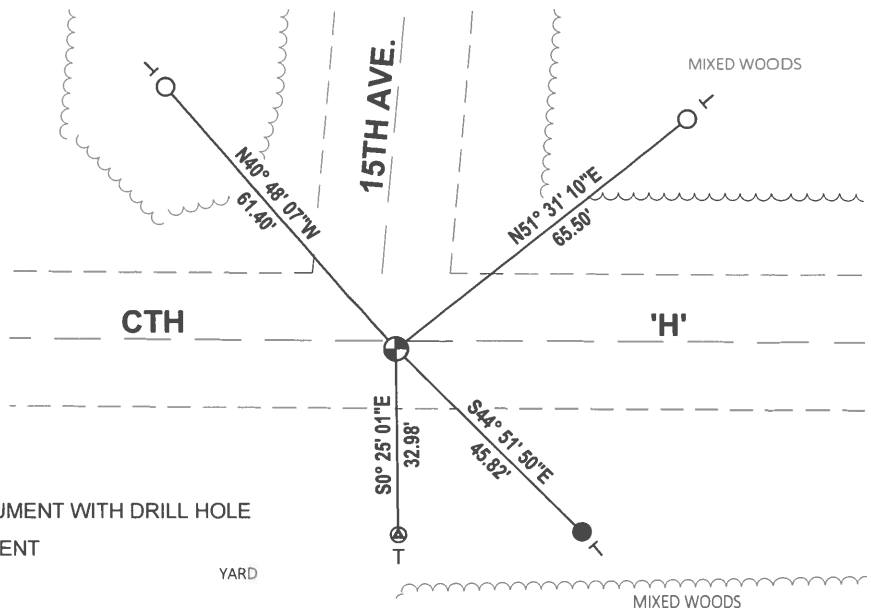
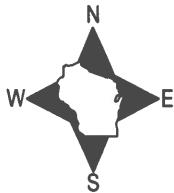
DATA SHOWN HERE ON THIS TIE SHEET IS CORRECT AND COMPLETE TO THE BEST OF MY KNOWLEDGE AND BELIEF.

PROFESSIONAL LAND SURVEYOR

DATE 3/3/2021

### - TIE SKETCH

NOTE: THE CORNER LANDS 2± SOUTH OF CTH 'H' CENTERLINE.



- SET 3/4" x 18" IRON REBAR, 1.50#/FT
- FOUND 3/4" IRON ROD
- ⊙ FOUND 6" ADAMS COUNTY CONCRETE MONUMENT WITH DRILL HOLE
- ⊙ SET 3/4" X 18" IRON REBAR, 1.50#/FT MONUMENT
- VINYL "T" POST

ADAMS COUNTY

Survey Monument Record

TYPE OF MONUMENT: ~~HARRISON~~ MONUMENT MAGNAIL

STATE PLANE COORDINATES: N \_\_\_\_\_ E \_\_\_\_\_

ELEVATION — M.S.L. DATUM: \_\_\_\_\_

THETA ANGLE: \_\_\_\_\_

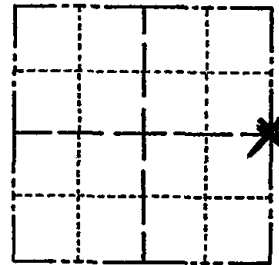
FIELD BOOK: \_\_\_\_\_ PAGE \_\_\_\_\_

CORNER NO. 1014 <sup>119</sup>

SECTION 35

TOWN 16

RANGE 5



LOCATION (Indicated by 'X')

SEAL:

BASIS FOR MONUMENT LOCATION

(Use reverse side if necessary)

Show info such as: History of corner, with reference to Vol. and pg, dates, surveyor; exact description of monument replaced; if location computed, by taped or EDM traverse; landowner remarks, etc.

Ran EDM/T2 traverse around South Half of Section 35 to determine search areas for investigation.

Retraced survey by Al Schneider in Section 35, with resulting location falling 33 feet North of an existing concrete monument.

Monumented location with Harrison Monument.

COR OK 10/6/80 KU-SK

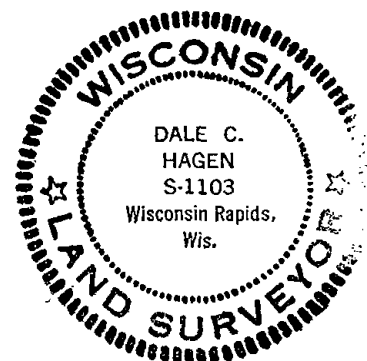
TOP OF HARRISON IS BROKEN OFF TIES ALL OK

ALL OK 1990 - GR

ALL OK 8-25-99 JG-BS

SEE ATTACHED SHEET, MC & BH, 7-15, 99

ALL OK 5-17-00 - JG



4/15/85 D.K.

CERTIFIED CORRECT:

Dale C. Hagen

Registered Land Surveyor

DATE: Sept. 16, 1976

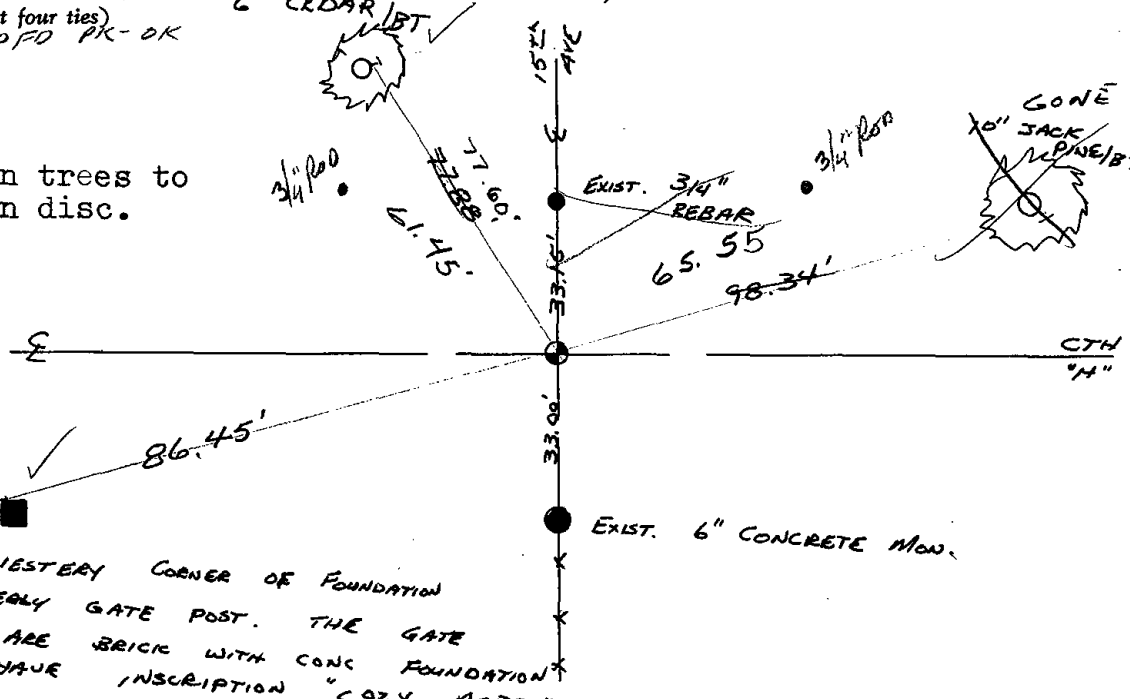
TIE SKETCH

ADD RODS 3-7-05 JS-SS PK SET @ CORNER USING TIES, 1-17-05 JG-DA

(Show at least four ties) 12-20-10 PD PK-OK

Note;

Ties in trees to nail in disc.



NORTHWESTERN CORNER OF FOUNDATION OF EASTEALY GATE POST. THE GATE POSTS ARE BRICK WITH CONC FOUNDATION POSTS HAVE INSCRIPTION "COZY ACRES"