

34
SECTION

16
TOWN

05
RANGE

ADAMS COUNTY

COUNTY CORNER NO: 128

ROMPORTOL ID: 41605340020

PUBLIC LAND SURVEY MONUMENT RECORD

TYPE OF MONUMENT: HARRISON
ADAMS COUNTY COORDINATES, NAD 83 (2007)

N. 164781.347

E. 512628.754

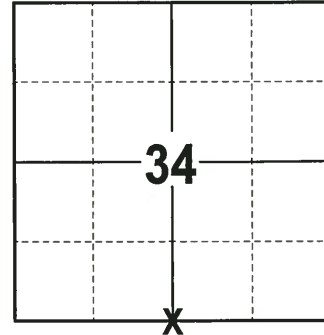
ELEVATION- DATUM

FIELD WORK DATE: 10/11/2017

BASIS FOR MONUMENT LOCATION

1980 - PLS 606 SEARCHED THE SURROUNDING AREA FOR EVIDENCE OF THE CORNER AND FOUND NONE. SET THE CORNER AT EQUIDISTANCE AND ON THE LINE BETWEEN THE SW CORNER AND THE SE CORNER OF SECTION 34. TIED OUT THE CORNER.

2017 - PLS 2994 FOUND A HARRISON MONUMENT 3" ABOVE THE GROUND SURFACE AND 2 WITNESS TREES. THE MONUMENT AGREES WITH THE EXISTING WITNESS TREES. ACCEPTED THE HARRISON MONUMENT AS THE CORNER LOCATION. SET 4 NEW TIES AND MEASURED TO THE TIES AND WITNESS TREES.



LOCATION
(INDICATE CORNER BY "X")

SEAL:



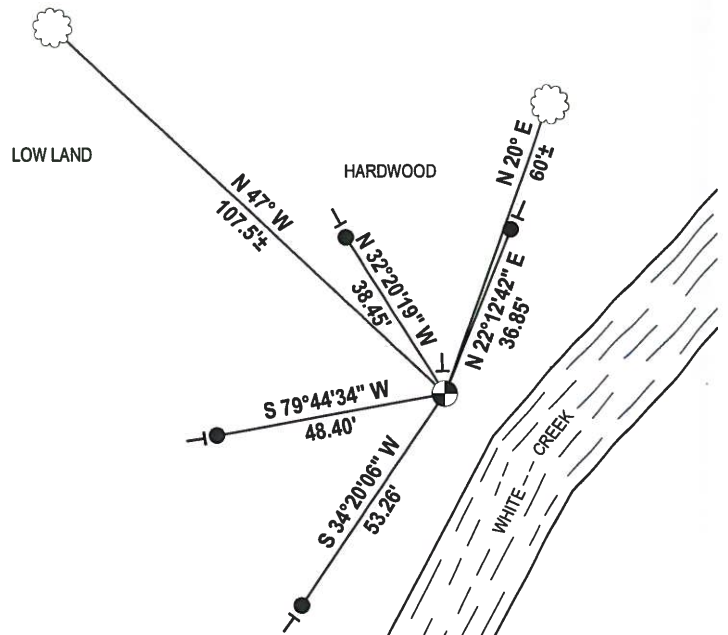
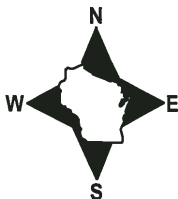
DATA SHOWN HERE ON THIS TIE SHEET IS CORRECT AND COMPLETE TO THE BEST OF MY KNOWLEDGE AND BELIEF.

PROFESSIONAL LAND SURVEYOR

DATE 12-4-17

- TIE SKETCH

NOTE: THE CORNER FALLS 13'± NORTHWEST OF THE NORTH SHORE LINE OF WHITE CREEK.



- 3/4" x 72" IRON REBAR SET, 1.50#/FT
- ⊕ HARRISON FOUND
- VINYL "T" POST
- ☼ WITNESS TREE FOUND

Adams

~~JUNEAU~~ COUNTY

Survey Monument Record

TYPE OF MONUMENT: Harrison

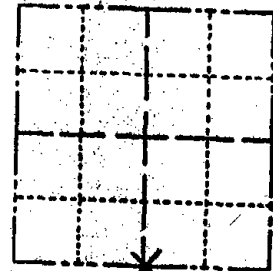
STATE PLANE COORDINATES: N _____
E _____

ELEVATION — M.S.L. DATUM: _____

THETA ANGLE: _____

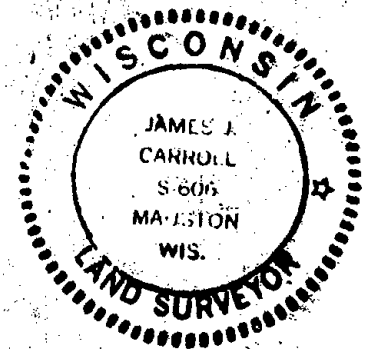
FIELD BOOK: _____ PAGE _____

CORNER NO. 128
SECTION 34
TOWN 16 N
RANGE 5 E



LOCATION
(Indicated by 'X')

SEAL:



BASIS FOR MONUMENT LOCATION

(Use reverse side if necessary)

Show info such as: History of corner, with reference to Vol. and pg. dates, surveyor; exact description of monument replaced; if location computed, by taped or EDM traverse; landowner remarks, etc.

Surrounding area looked over for any evidence of existing corner.

Corner set at equidistance on the line between the SW corner and the SE corner of the section being found in place.

CERTIFIED CORRECT:

James J. Carroll

Registered Land Surveyor

DATE: May 22, 1980

TIE SKETCH

(Show at least four ties)

All tie's are spikes + washers

REBLAZED TREES 11-4-85 S.S.

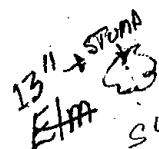
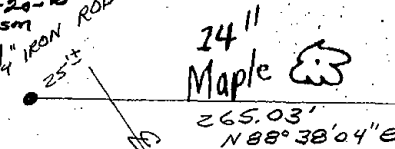
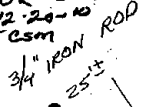
ALL OK 2-15-90 KZ-GR

ALL OK 2-10-00 FL S.S.

ALL OK 3-4-05 SS JS

OK 12-24-10

SEE CSM



108.04

30.10

60.62

6.85

14.14

STEEL POST W/SIGN AT CORNER

265.03' N88°38'04\"/>

589°07'10\"/>

271.58'

DRIVEWAY

SURVEY 10-18-85 BY RHINEHART

White Creek



3/4\"/>

CSM