

35
SECTION

16
TOWN

05
RANGE

ADAMS COUNTY

COUNTY CORNER NO: 130

ROMPORTOL ID: 41605350020

PUBLIC LAND SURVEY MONUMENT RECORD

TYPE OF MONUMENT: HARRISON (BROKEN-TOP)
ADAMS COUNTY COORDINATES, NAD 83 (2007)

N. 164731.950

E. 517922.749

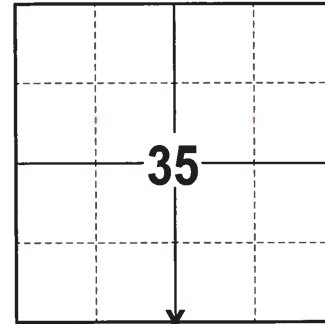
ELEVATION- _____ DATUM _____

FIELD WORK DATE: 10/11/2017

BASIS FOR MONUMENT LOCATION

1976 - PLS 1103 RAN AN EDM/T2 TRAVERSE AROUND THE SOUTH HALF OF SECTION 35 TO DETERMINE THE SEARCH AREAS FOR INVESTIGATION. FOUND A 3/4"x24" IRON ROD SET BY H.A. SIME AS RECORDED IN ADAMS COUNTY CERTIFIED SURVEY MAP NO. 75. REMONUMENTED THE CORNER WITH A HARRISON MONUMENT AND TIED OUT.

2017 - PLS 2994 FOUND A HARRISON MONUMENT WITH A BROKEN TOP 6" BELOW THE ROAD SURFACE AND 1 PROPERTY IRON USED AS A TIE. THE MONUMENT AGREES WITH THE EXISTING PROPERTY IRON TIE. ACCEPTED THE HARRISON MONUMENT WITH A BROKEN TOP AS THE CORNER LOCATION. SET 3 NEW TIES AND MEASURED TO THE TIES.



LOCATION
(INDICATE CORNER BY "X")

SEAL:



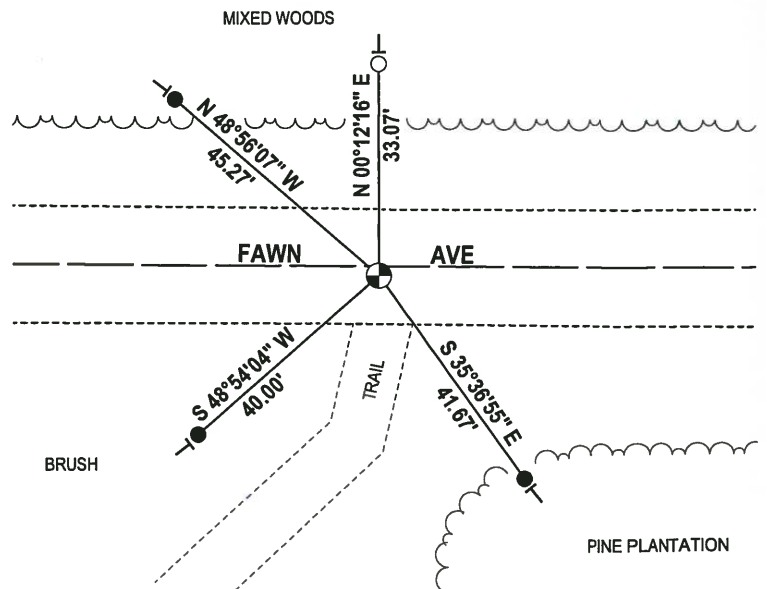
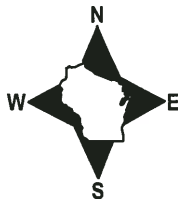
DATA SHOWN HERE ON THIS TIE SHEET IS CORRECT AND COMPLETE TO THE BEST OF MY KNOWLEDGE AND BELIEF.

PROFESSIONAL LAND SURVEYOR

DATE 12-4-17

- TIE SKETCH

NOTE: THE CORNER FALLS 2± SOUTH OF THE CENTERLINE OF FAWN AVE.



- 3/4" x 18" IRON REBAR SET, 1.50#/FT
- 3/4" IRON ROD FOUND
- ⊙ HARRISON (BROKEN-TOP) FOUND
- VINYL "T" POST

