

## PUBLIC LAND SURVEY MONUMENT RECORD

TYPE OF MONUMENT: HARRISON  
 ADAMS COUNTY COORDINATES, NAD 83 (2007)

N. 164735.515

E. 520569.322

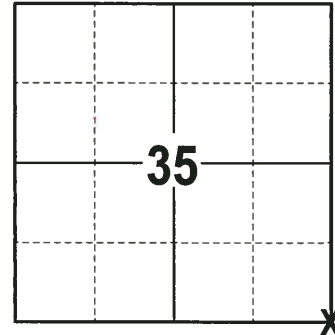
ELEVATION- --- DATUM ---

FIELD WORK DATE: 10/10/2017

### BASIS FOR MONUMENT LOCATION

1976 - PLS 1103 DUG BY HAND AND FOUND A 14"x7"x5" SANDSTONE WITH A POINT ON TOP. THE LOCATION OF THE STONE FIT THE BEARING TREE BY M.C. SMITH TO THE SOUTHWEST AS RECORDED IN VOL. 2, PAGE 123 OF THE ADAMS COUNTY SURVEY RECORD (MAY 20, 1924). REPLACED THE SANDSTONE WITH A HARRISON MONUMENT AND TIED OUT.

2017 - PLS 2994 FOUND A HARRISON MONUMENT 2" BELOW THE ROAD SURFACE AND 1 WITNESS. THE MONUMENT AGREES WITH THE EXISTING WITNESS. ACCEPTED THE HARRISON MONUMENT AS THE CORNER LOCATION. SET 4 NEW TIES AND MEASURED TO THE TIES AND WITNESS.



**LOCATION**  
 (INDICATE CORNER BY "X")

SEAL:



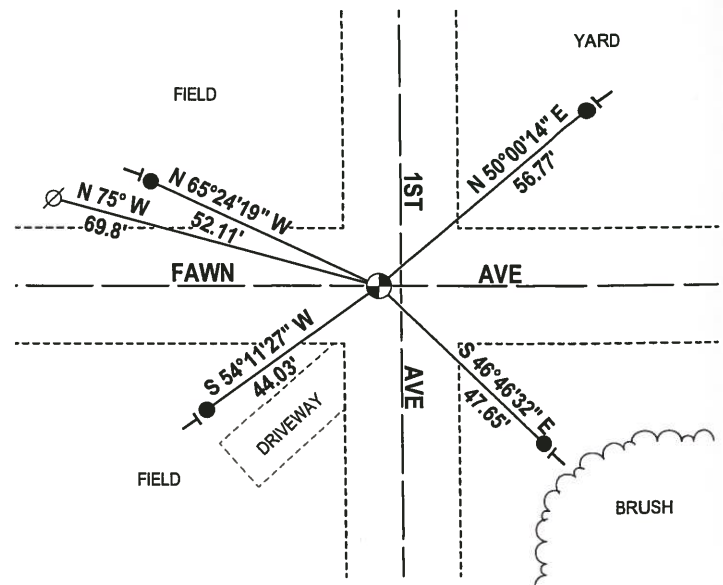
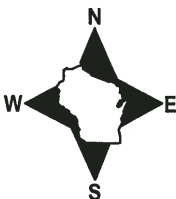
DATA SHOWN HERE ON THIS TIE SHEET IS CORRECT AND COMPLETE TO THE BEST OF MY KNOWLEDGE AND BELIEF.

PROFESSIONAL LAND SURVEYOR

DATE 12-4-17

### - TIE SKETCH -

NOTE: THE CORNER FALLS 5± WEST OF THE CENTERLINE OF 1ST AVE.



- 3/4" x 18" IRON REBAR SET, 1.50#/FT
- ⊙ HARRISON FOUND
- ⊘ WITNESS POWER POLE FOUND
- ┌ VINYL "T" POST

ADAMS COUNTY

CORNER NO. 1015

Survey Monument Record

SECTION 35

TYPE OF MONUMENT: 30" HARRISON MONUMENT

TOWN 16

STATE PLANE COORDINATES: N \_\_\_\_\_

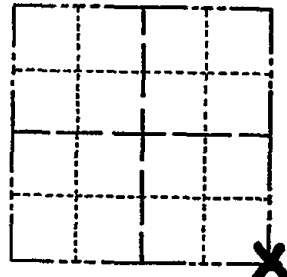
RANGE 5

E \_\_\_\_\_

ELEVATION — M.S.L. DATUM: \_\_\_\_\_

THETA ANGLE: \_\_\_\_\_

FIELD BOOK: \_\_\_\_\_ PAGE \_\_\_\_\_



LOCATION (Indicated by 'X')

SEAL:

BASIS FOR MONUMENT LOCATION

(Use reverse side if necessary)

Show info such as: History of corner, with reference to Vol. and pg, dates, surveyor; exact description of monument replaced; if location computed, by taped or EDM traverse; landowner remarks, etc.



Dug by hand and found 14" x 7" x 5" sandstone with point on top. Location of stone fit bearing tree by M.C. Smith to Southwest as recorded in Vol 2, Page 123 of Adams County Survey Records (May 20, 1924)

Replaced stone with Harrison Monument.

- COR. OK 10/6/80 KV-SK
ALL OK 7-9-85 OK
ALL OK 2-15-90 KZ-GR
ALL OK 8-25-94 JG-BS
SEE ATTACHED SHEET MC+BH, 9-15-99
ALL OK, 5-17-00 - JG
ALL OK 3-4-05 SS JS
" " 7-7-10 SS

CERTIFIED CORRECT:

Dale C Hagen
Registered Land Surveyor

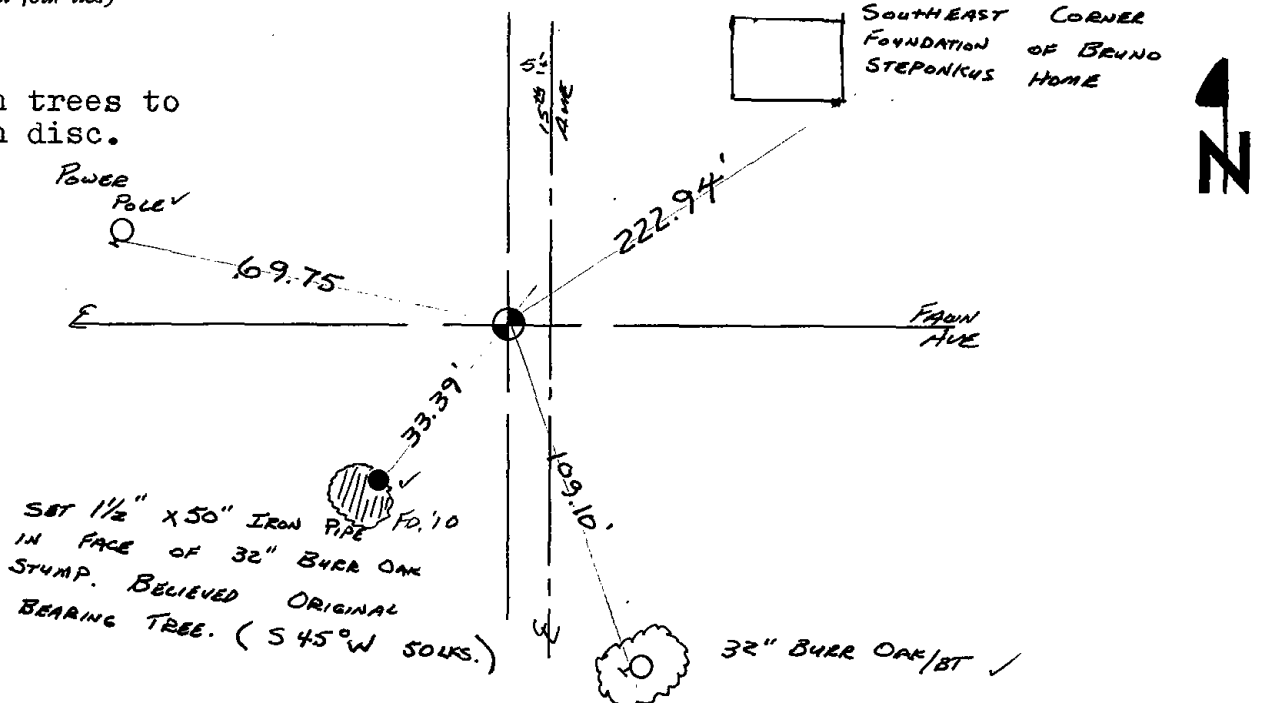
DATE: Sept. 15, 1976

TIE SKETCH

(Show at least four ties)

NOTE:

Ties in trees to nail in disc.



(131)

ADAMS COUNTY

Survey Monument Record

TYPE OF MONUMENT: 30" Harrison Monument

STATE PLANE COORDINATES: N \_\_\_\_\_  
E \_\_\_\_\_

ELEVATION — M.S.L. DATUM: \_\_\_\_\_

THETA ANGLE: \_\_\_\_\_

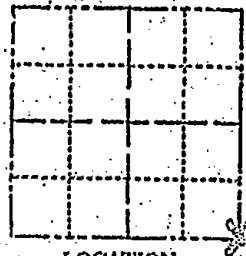
FIELD BOOK: \_\_\_\_\_ PAGE \_\_\_\_\_

CORNER NO. 1015

SECTION 35

TOWN 16

RANGE 5



LOCATION  
(Indicated by 'X')

SEAL:

BASIS FOR MONUMENT LOCATION

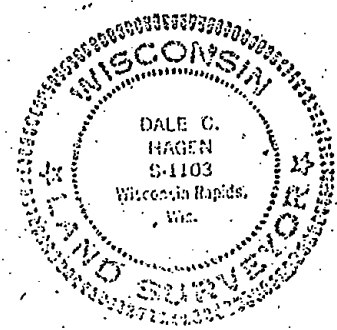
(Use reverse side if necessary)

Show info such as: History of corner, with reference to Vol. and pg. dates, surveyor; exact description of monument replaced; if location computed, by taped or EDM traverse; landowner remarks, etc.

Dug by hand and found 14" x 7" x 5" sandstone with point on top. Location of stone fit bearing tree by H.C. Smith to Southwest as recorded in Vol 2, Page 123 of Adams County Survey Records (May 20, 1924)

Replaced stone with Harrison monument.

COR. CR. 10/6/80 A. S. S.  
new tie 9/15/99 MC + BH



CERTIFIED CORRECT:  
Dale C. Hagen  
Registered Land Surveyor  
DATE: Sept. 16, 1978

THE SKETCH

(Show at least four ties)

NOTE:

Ties in trees to nail in disc.

