

PUBLIC LAND SURVEY MONUMENT RECORD

TYPE OF MONUMENT: HARRISON
 ADAMS COUNTY COORDINATES, NAD 83 (2007)

N. 164735.677

E. 523215.836

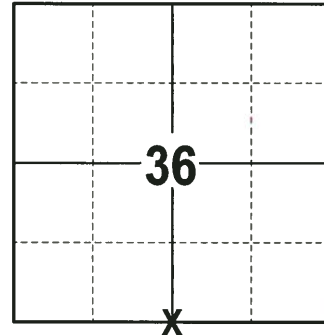
ELEVATION- --- DATUM ---

FIELD WORK DATE: 10/10/2017

BASIS FOR MONUMENT LOCATION

1976 - PLS 878 EXCAVATED AT THE CORNER WITH A BACKHOE AND FOUND NOTHING. THE AREA FALLS IN A ROAD CUT. SET A HARRISON MONUMENT ON A STRAIGHT LINE AND HALF WAY BETWEEN CONCRETE REFERENCE MONUMENTS WHICH WERE 66' APART AND TIED OUT.

2017 - PLS 2994 FOUND A HARRISON MONUMENT 2" BELOW THE ROAD SURFACE AND 2 TIES. THE MONUMENT AGREES WITH THE EXISTING TIES. ACCEPTED THE HARRISON MONUMENT AS THE CORNER LOCATION. SET 2 NEW TIES AND MEASURED TO THE TIES.



LOCATION
 (INDICATE CORNER BY "X")

SEAL:



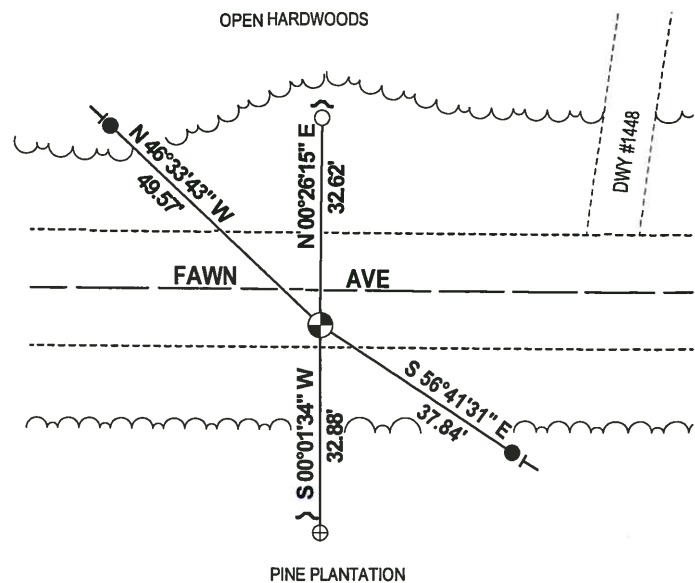
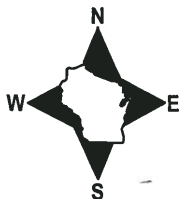
DATA SHOWN HERE ON THIS TIE SHEET IS CORRECT AND COMPLETE TO THE BEST OF MY KNOWLEDGE AND BELIEF.

PROFESSIONAL LAND SURVEYOR

DATE 12-4-17

- TIE SKETCH -

NOTE: THE CORNER FALLS 7± SOUTH OF THE CENTERLINE OF FAWN AVE.



- 3/4" x 18" IRON REBAR SET, 1.50#/FT
- 3/4" O.D. IROD PIPE FOUND
- ⊕ 4" CONCRETE MONUMENT FOUND
- ⊙ HARRISON FOUND
- ↙ STEEL FENCE POST
- VINYL "T" POST

ADAMS COUNTY

Survey Monument Record

TYPE OF MONUMENT: Harrison standard

STATE PLANE COORDINATES: N _____

E _____

ELEVATION — M.S.L. DATUM: _____

THETA ANGLE: _____

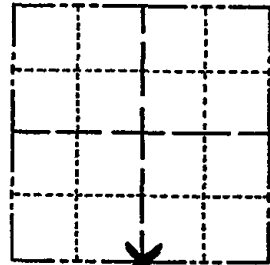
FIELD BOOK: file PAGE _____

CORNER NO. 1018

SECTION 36

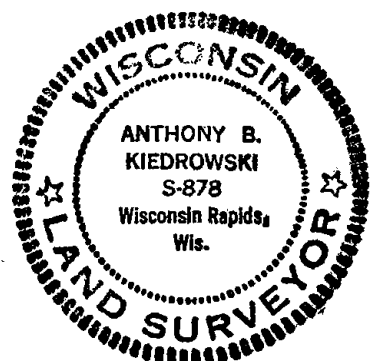
TOWN 16

RANGE 5



LOCATION (Indicated by 'X')

SEAL:



BASIS FOR MONUMENT LOCATION

(Use reverse side if necessary)

Show info such as: History of corner, with reference to Vol. and pg, dates, surveyor; exact description of monument replaced; if location computed, by taped or EDM traverse; landowner remarks, etc.

Excavated with backhoe. Found nothing. Area falls in road cut. Corner set on a straight line and half way between concrete reference monuments which were 66' apart.

COR. OK 10/6/80 KU-SK

COR OK 7-9-85

OK 2-15-90 KZ-GR

1-GONE, 1-NEW 8-25-94 JG-BS

ALL OK 5-17-00 JG

OK- 3-4-05 JS-SS

OK 7-7-10 SS

CERTIFIED CORRECT:

Anthony B. Kiedrowski
Registered Land Surveyor

DATE: 8/26/76

TIE SKETCH

(Show at least four ties)

