

33
SECTION

17
TOWN

06
RANGE

ADAMS COUNTY

COUNTY CORNER NO: 127

ROMPORTOL ID: 41706330000

PUBLIC LAND SURVEY MONUMENT RECORD

TYPE OF MONUMENT: HARRISON
ADAMS COUNTY COORDINATES, NAD 83 (2007)

N. 192408.782

E. 541794.630

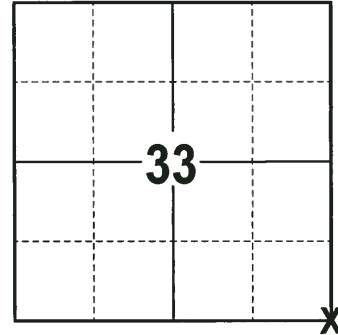
ELEVATION- DATUM

FIELD WORK DATE: 11/27/2017

BASIS FOR MONUMENT LOCATION

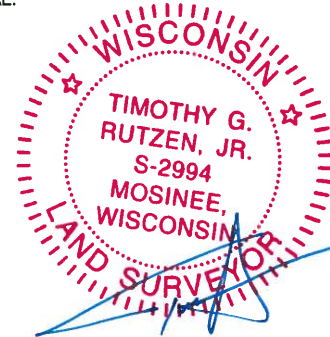
1972 - PLS 878 LOCATION WAS DETERMINED BY TRAVERSING THE ENTIRE SECTION AND COMPARING POSSESSION LINES AND ORIGINAL GOVERNMENT NOTES. THE CORNER WAS PREVIOUSLY MARKED WITH A PK NAIL. REPLACED THE PK NAIL WITH A HARRISON MONUMENT AND RE-TIED.

2017 - PLS 2994 FOUND A MAG NAIL IN THE ROAD SURFACE REMOVED THE MAG NAIL AND FOUND A HARRISON MONUMENT 6" BELOW THE MAG NAIL. NO WITNESSES WERE FOUND OTHER THAN 1 PROPERTY IRON. ACCEPTED THE HARRISON MONUMENT AS THE CORNER LOCATION. SET 3 NEW TIES AND MEASURED TO THE TIES AND PROPERTY IRON.



LOCATION
(INDICATE CORNER BY "X")

SEAL:



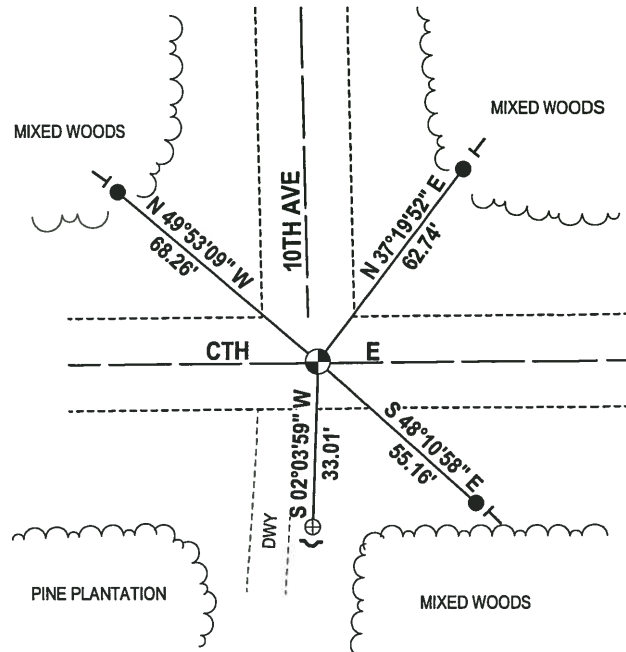
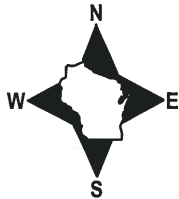
DATA SHOWN HERE ON THIS TIE SHEET IS CORRECT AND COMPLETE TO THE BEST OF MY KNOWLEDGE AND BELIEF.

PROFESSIONAL LAND SURVEYOR

DATE 12-21-17

- TIE SKETCH

NOTE: THE CORNER FALLS 2± EAST OF THE CENTERLINE OF 10TH AVE.



- 3/4" x 18" IRON REBAR SET, 1.50#/FT
- ⊕ 1-1/4" IROD ROD FOUND
- ⊙ HARRISON FOUND
- ~ STEEL FENCE POST
- VINYL "T" POST

ADAMS COUNTY

Survey Monument Record

TYPE OF MONUMENT: HARRISON MONUMENT

STATE PLANE COORDINATES: N _____
E _____

ELEVATION — M.S.L. DATUM: _____

THETA ANGLE: _____

FIELD BOOK: 105 PAGE 67

CORNER NO. 186

SECTION 3

TOWN 16

RANGE 6

BASIS FOR MONUMENT LOCATION

(Use reverse side if necessary)

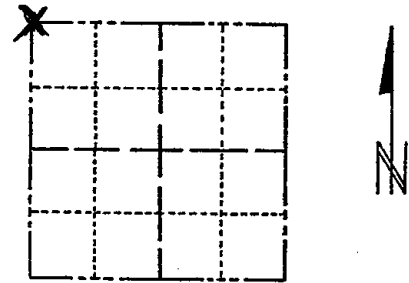
Show info such as: History of corner, with reference to Vol. and pg, dates, surveyor; exact description of monument replaced; if location computed, by taped or EDM traverse; landowner remarks, etc.

Location was determined by traverseing

September 5, 1972

Anthony B. Kiedrowski R.L.S. 878

Location determined by traversing entire section and comparing possession lines and original government notes. Point monumented was previously marked with a PK nail.



LOCATION (Indicated by 'X')

SEAL:



COR. OK. 10-2-75 SS
COR OK 10/15/80 KV-RN
ALL OK 7/15/85 DK
ALL OK 1-30-90 GR

CERTIFIED CORRECT:

Anthony B. Kiedrowski
Registered Land Surveyor

DATE: 1-30-73

TIE SKETCH ALL OK 2/2/95-JG ALL OK, 2-22-05
ALL OK 2/15/00 JG-SS

(Show at least four ties)

