

PUBLIC LAND SURVEY MONUMENT RECORD

TYPE OF MONUMENT: HARRISON
ADAMS COUNTY COORDINATES, NAD 83 (2007)

N. 192425.011

E. 544430.363

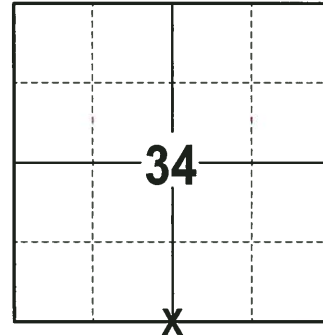
ELEVATION- DATUM

FIELD WORK DATE: 11/27/2017

BASIS FOR MONUMENT LOCATION

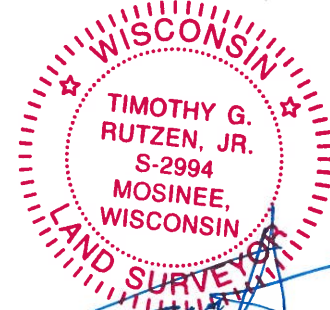
1972 - PLS 878 FOUND RR SPIKE AND ACCEPTED AS CORRECT AFTER TRAVERSING THE ENTIRE SECTION. THIS POINT IS ON A STRAIGHT LINE EQUIDISTANT BETWEEN SECTION CORNERS. REPLACED THE RR SPIKE WITH A HARRISON MONUMENT AND RE-TIED.

2017 - PLS 2994 FOUND A HARRISON MONUMENT 6" BELOW THE ROAD SURFACE, CONFIRMED THE CORNER LOCATION BY VERIFYING IF IT WAS ON A STRAIGHT LINE AND EQUIDISTANT BETWEEN THE SW AND SE CORNERS OF SECTION 34. ACCEPTED THE HARRISON MONUMENT AS THE CORNER LOCATION. SET 4 NEW TIES AND MEASURED TO THE TIES.



LOCATION
(INDICATE CORNER BY "X")

SEAL:



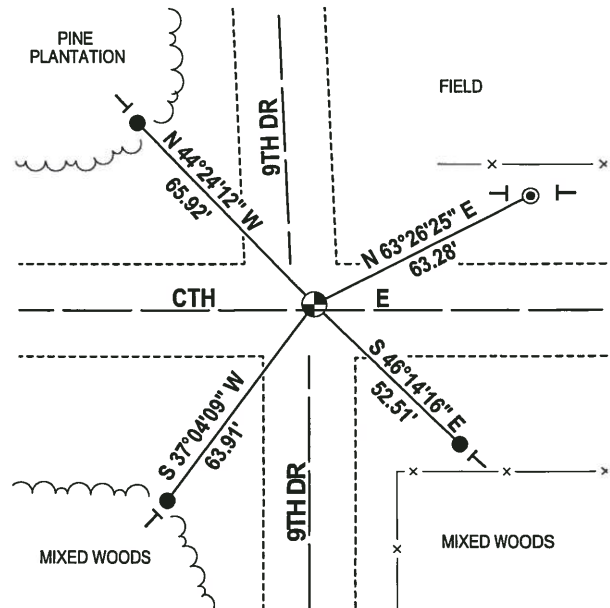
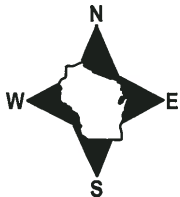
DATA SHOWN HERE ON THIS TIE SHEET IS CORRECT AND COMPLETE TO THE BEST OF MY KNOWLEDGE AND BELIEF.

PROFESSIONAL LAND SURVEYOR

DATE 12-21-17

- TIE SKETCH

NOTE: THE CORNER FALLS 1.5'± NORTH OF THE CENTERLINE OF CTH E AND 10' EAST OF 9TH DR TO THE NORTH.



- 3/4" x 18" IRON REBAR SET, 1.50#/FT
- ⊙ BRASS DISK IN CONCRETE (NGS 3U11)
- ⊕ HARRISON FOUND
- ┌ VINYL "T" POST

ADAMS COUNTY

Survey Monument Record

TYPE OF MONUMENT: HARRISON MONUMENT

STATE PLANE COORDINATES: N _____

E _____

ELEVATION — M.S.L. DATUM: _____

THETA ANGLE: _____

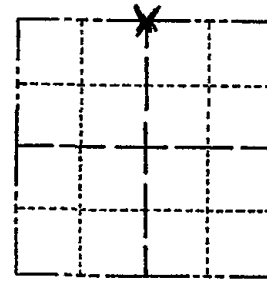
FIELD BOOK: 105 PAGE 68

CORNER NO. 187

SECTION 3

TOWN 16

RANGE 6



LOCATION
(Indicated by 'X')

SEAL:



BASIS FOR MONUMENT LOCATION

(Use reverse side if necessary)

Show info such as: History of corner, with reference to Vol. and pg, dates, surveyor; exact description of monument replaced; if location computed, by taped or EDM traverse; landowner remarks, etc.

Found R.R. spike and set monument

September 5, 1972

Anthony B. Kiedrowski R.L.S. 878

RR spike accepted as correct after traversing entire section. This point is on a straight line equidistant between section corners.

HARRISON d.t. 10-2-75 SS

COR OK 10/15/80 KURN

ALL OK 7/15/85 DK

ALL OK 1-30-90 GR

CERTIFIED CORRECT:

Anthony B. Kiedrowski
Registered Land Surveyor

DATE: 1-30-73

TIE SKETCH

ALL OK 2/2/95 JG
ALL OK, 2-15-00, JG-SS

ALL OK 2-22-05-JG
1 NEW 1-12-10 SS

(Show at least four ties)

