

34
SECTION

17
TOWN

06
RANGE

ADAMS COUNTY

COUNTY CORNER NO: 129
ROMPORTOL ID: 41706340000

PUBLIC LAND SURVEY MONUMENT RECORD

TYPE OF MONUMENT: HARRISON
ADAMS COUNTY COORDINATES, NAD 83 (2007)

N. 192441.289

E. 547065.712

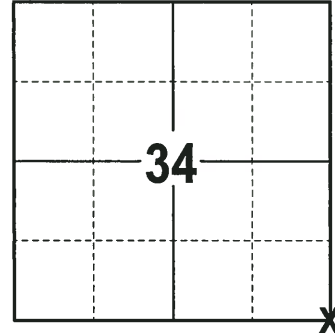
ELEVATION- DATUM

FIELD WORK DATE: 011/21/2017

BASIS FOR MONUMENT LOCATION

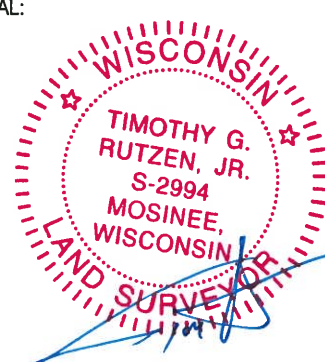
1972 - PLS 878 LOCATION DETERMINED BY TRAVERSING THE ENTIRE SECTION AND COMPARING GOVERNMENT NOTES AND POSSESSION LINES. SET A HARRISON MONUMENT AT THE CALCULATED LOCATION AND TIED OUT.

2017 - PLS 2994 FOUND A HARRISON MONUMENT 6" BELOW THE ROAD SURFACE, NO WITNESSES WERE RECOVERED. ACCEPTED THE HARRISON MONUMENT AS THE CORNER LOCATION. SET 4 TIES AND MEASURED TO THE TIES.



LOCATION
(INDICATE CORNER BY "X")

SEAL:



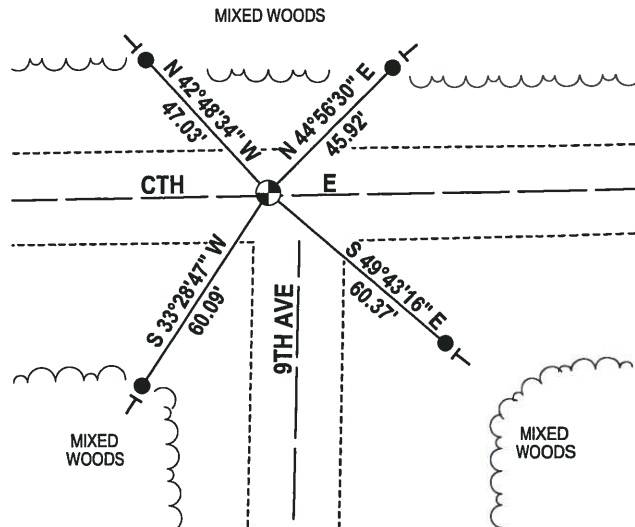
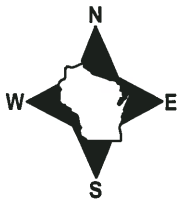
DATA SHOWN HERE ON THIS TIE SHEET IS CORRECT AND COMPLETE TO THE BEST OF MY KNOWLEDGE AND BELIEF.

PROFESSIONAL LAND SURVEYOR

DATE 12-21-17

- TIE SKETCH

NOTE: THE CORNER FALLS 2½' NORTH OF THE CTH E CENTERLINE AND 12' WEST OF THE CENTERLINE OF 9TH AVE.



- 3/4" x 18" IRON REBAR SET, 1.50#/FT
- ⊕ HARRISON FOUND
- VINYL "T" POST

ADAMS COUNTY

CORNER NO. 189

Survey Monument Record

SECTION 3

TYPE OF MONUMENT: HARRISON MONUMENT

TOWN 16

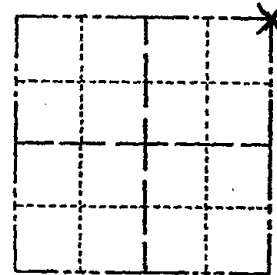
STATE PLANE COORDINATES: N _____
E _____

RANGE 6

ELEVATION — M.S.L. DATUM: _____

THETA ANGLE: _____

FIELD BOOK: 105 PAGE 70



LOCATION
(Indicated by 'X')

SEAL:



BASIS FOR MONUMENT LOCATION

(Use reverse side if necessary)

Show info such as: History of corner, with reference to Vol. and pg, dates, surveyor; exact description of monument replaced; if location computed, by taped or EDM traverse; landowner remarks, etc.

Location was determined by traverseing

August 4, 1972

Anthony B. Kiedrowski R.L.S. 878

Location determined by traversing entire section and comparing government notes and possession lines.

*Harrison O.K. - need 1 new tie
10-2-75 S.T.S.*

COR OK 10/15/80 KU-RN

ALL OK 7/15/85 DK

ALL OK 1-30-90 GR

CERTIFIED CORRECT:

Anthony B. Kiedrowski
Registered Land Surveyor

DATE: 1-30-73

TIE SKETCH

ALL OK 2/2/95 JG

1 NEW TIE 1-12-10 SS

ALL OK, 2-15-00, JG-55

1-GONE, 2-NEW, 4-5-05, JG

(Show at least four ties)

