

ADAMS COUNTY

Survey Monument Record

TYPE OF MONUMENT: Harrison

STATE PLANE COORDINATES: N _____

E _____

ELEVATION -- M.S.L. DATUM: _____

THETA ANGLE: _____

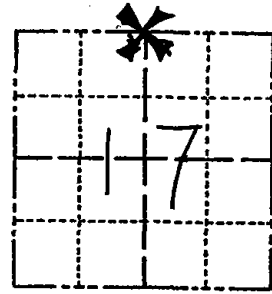
FIELD BOOK: 39 PAGE 49

CORNER NO. 44 (44)

SECTION 17

TOWN 16 N

RANGE 6 E



LOCATION
(Indicated by 'X')

SEAL:



BASIS FOR MONUMENT LOCATION

(Use reverse side if necessary)

Show info such as: History of corner, with reference to Vol. and pg, dates, surveyor; exact description of monument replaced; if location computed, by taped or EDM traverse; landowner remarks, etc.

Ran EDM/T2 traverse around Sections 17 and 18 to determine search areas.

Found original bearing tree to the Southeast (Original* 8" Blk Oak S44°E 62 links=40.92').

Excavated at distance and direction indicated by original notes, and found stain from post.

Remonumented stain from post on 12-15-76.

All O.K. 10-31-85 MB-SS

ALL OK 5-23-90 D.C.-SS.

" " 2-6-95 JG-LR

" " 5-31-00 JG-SS - STEEL POST 1' E. of MARK.

1-NEW, 2-28-05-JG

OK 4-9-10 SS

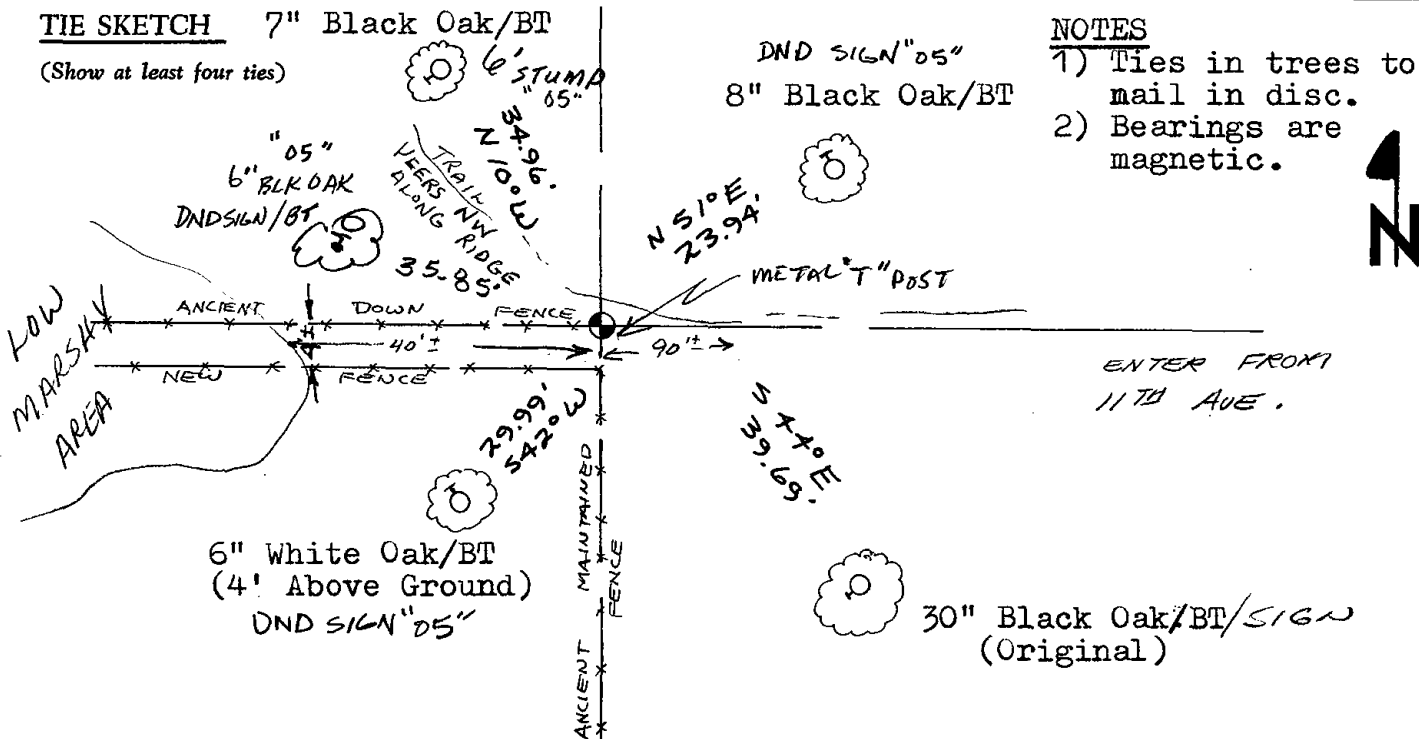
CERTIFIED CORRECT:

Dale C. Hagen
Registered Land Surveyor

DATE: 1-24-78

TIE SKETCH 7" Black Oak/BT

(Show at least four ties)



- NOTES**
- 1) Ties in trees to mail in disc.
 - 2) Bearings are magnetic.

ENTER FROM
11TH AVE.