

12
SECTION

16
TOWN

06
RANGE

ADAMS COUNTY

COUNTY CORNER NO: 53

ROMPORTOL ID: 41606120000

PUBLIC LAND SURVEY MONUMENT RECORD

TYPE OF MONUMENT: HARRISON
ADAMS COUNTY COORDINATES, NAD 83 (2007)

N. 185813.686

E. 557662.399

ELEVATION- DATUM

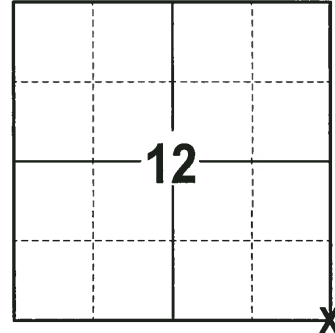
FIELD WORK DATE: 11/20/2017

BASIS FOR MONUMENT LOCATION

1972 - PLS 981 SET 30" HARRISON MONUMENT AT THE CORNER LOCATION AND TIED OUT.

1999 - PLS 1397 EXISTING MONUMENT WAS FOUND AT THE CORNER LOCATION. MONUMENT WAS REMOVED AND RAISED DUE TO RECONSTRUCTION OF C.T.H. B AND RE-TIED.

2017 - PLS 2994 FOUND A HARRISON MONUMENT 6" BELOW THE ROAD SURFACE. FOUND NO EVIDENCE OF ANY TIES OR WITNESSES. ACCEPTED THE HARRISON MONUMENT AS THE CORNER LOCATION. SET 4 NEW TIES AND MEASURED TO THE TIES.



LOCATION
(INDICATE CORNER BY "X")

SEAL:



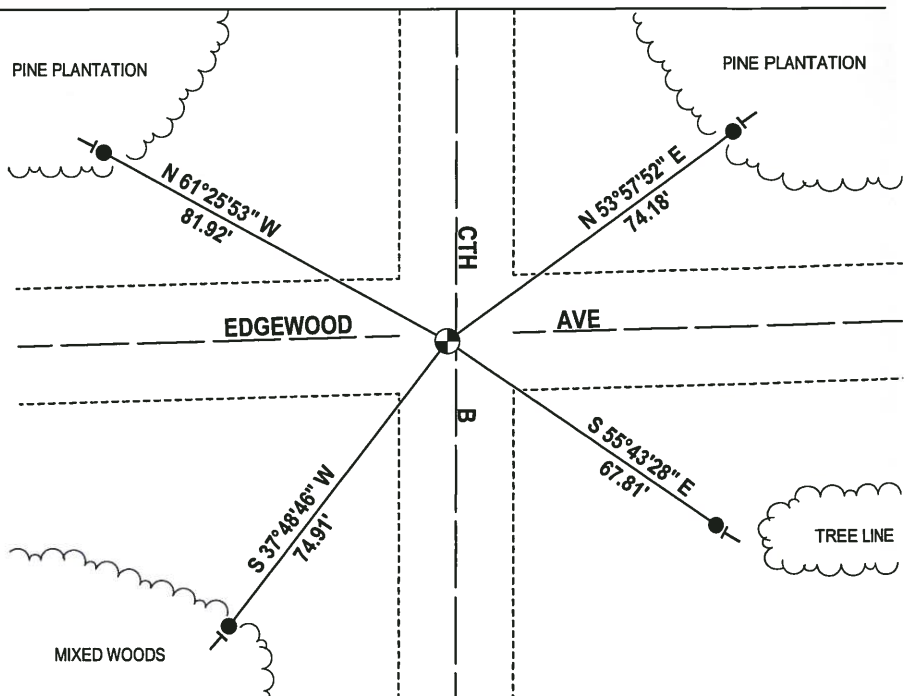
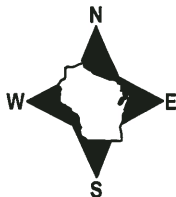
DATA SHOWN HERE ON THIS TIE SHEET IS CORRECT AND COMPLETE TO THE BEST OF MY KNOWLEDGE AND BELIEF.

PROFESSIONAL LAND SURVEYOR

DATE 12-21-17

- TIE SKETCH

NOTE: THE CORNER FALLS 1½ SOUTH OF THE CENTERLINE OF EDGEWOOD AVE AND 2½ WEST OF THE CENTERLINE OF CTH B.



- 3/4" x 18" IRON REBAR SET, 1.50#/FT
- ⊙ HARRISON FOUND
- VINYL "T" POST

ADAMS COUNTY

Survey Monument Record

TYPE OF MONUMENT: 30" HARRISON

STATE PLANE COORDINATES: N _____

E _____

ELEVATION - M.S.L. DATUM: _____

THETA ANGLE: _____

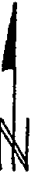
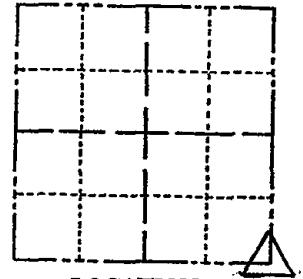
FIELD BOOK: 103 PAGE 47

CORNER NO. 96

SECTION 12

TOWN 16

RANGE 6



LOCATION (Indicated by 'X')

SEAL:

BASIS FOR MONUMENT LOCATION

(Use reverse side if necessary)

Show info such as: History of corner, with reference to Vol. and pg, dates, surveyor; exact description of monument replaced; if location computed, by taped or EDM traverse; landowner remarks, etc.

Set monument

April 26, 1972

Sam T. Miller R.L.S. s-981

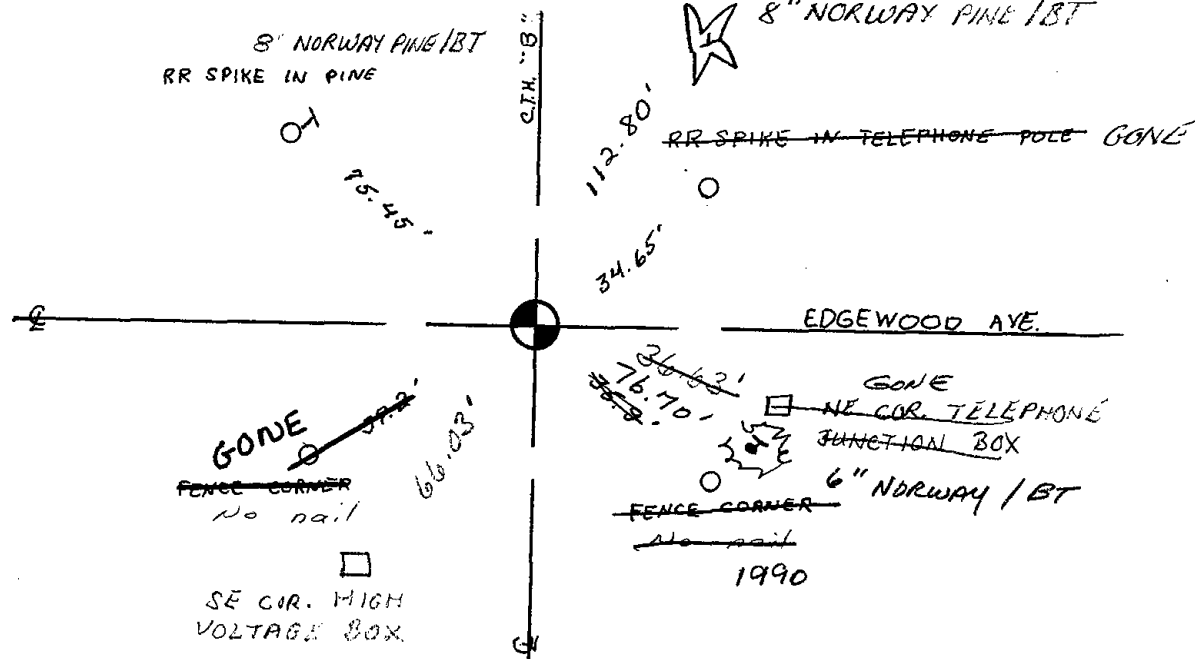
Harrison O.K. 10-2-75 S.S.
COR OK 10/15/80 KV-RN
1 GONE NO NEW 7-15-85 DK
ALL OK 1-9-90 GR-KZ
ALL OK 1/23/95 JG-GR

CERTIFIED CORRECT:

Registered Land Surveyor

DATE: _____

TIE SKETCH ALL OK SEE ATTACHED TIE SHEET RUSSELL 7/26/99, JG-55, L-16-00
1-GONE 1-NEW 3-1-05-JG
(Show at least four ties)



ADAMS COUNTY

Survey Monument Record

TYPE OF MONUMENT: 30" HARRISON MARKER

STATE PLANE COORDINATES: N _____

E _____

ELEVATION — M.S.L. DATUM: _____

THETA ANGLE: _____

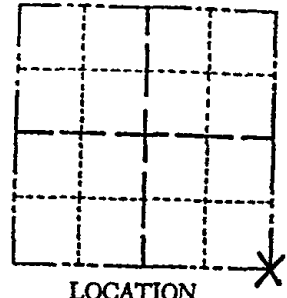
FIELD BOOK: _____ PAGE _____

CORNER NO. 96

SECTION 12

TOWN 16N

RANGE 6E



LOCATION
(Indicated by 'X')

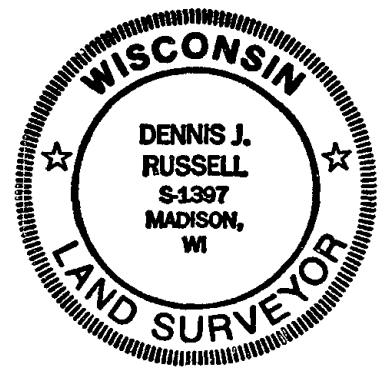
SEAL:

BASIS FOR MONUMENT LOCATION

(Use reverse side if necessary)

Show info such as: History of corner, with reference to Vol. and pg. dates, surveyor; exact description of monument replaced; if location computed, by taped or EDM traverse; landowner remarks, etc.

Existing Monument was found in place. Monument was removed and raised due to reconstruction of C.T.H. "B". All tie measurements are horizontal measurements unless noted otherwise.

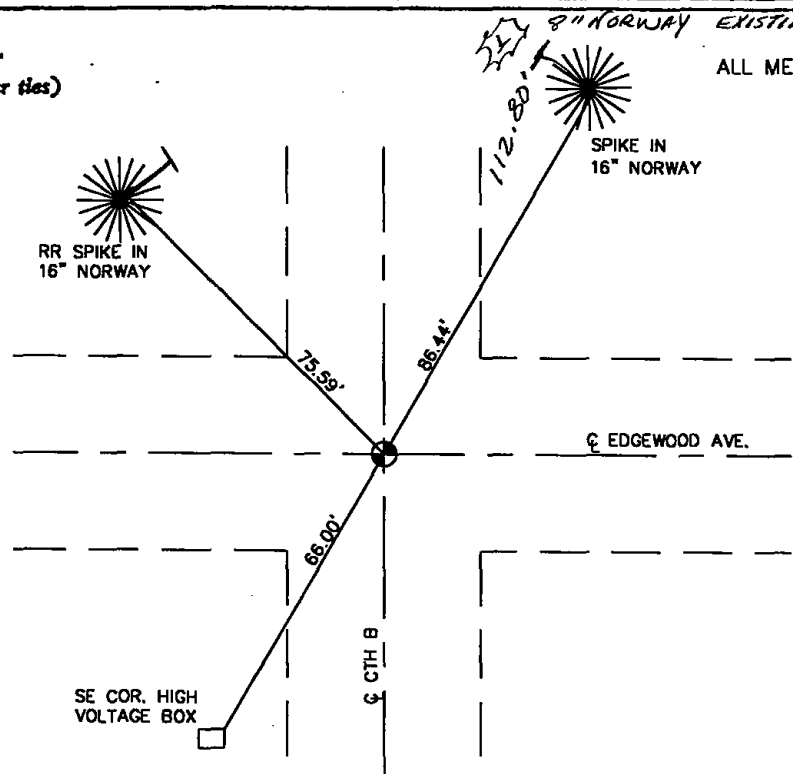


ALL OK, 2-16-00, JG-SS

CERTIFIED CORRECT:
Dennis J. Russell
 Registered Land Surveyor
 DATE: July 26, 1999

TIE SKETCH

(Show at least four ties)



ALL MEASUREMENTS ARE HORIZONTAL.



