

13
SECTION

16
TOWN

05
RANGE

ADAMS COUNTY

COUNTY CORNER NO: 73

ROMPORTOL ID: 4160513000

PUBLIC LAND SURVEY MONUMENT RECORD

TYPE OF MONUMENT: 2-3/8" O.D. IRON PIPE W/ALUMINUM CAP
ADAMS COUNTY COORDINATES, NAD 83 (2007)

N. 180565.940

E. 525930.005

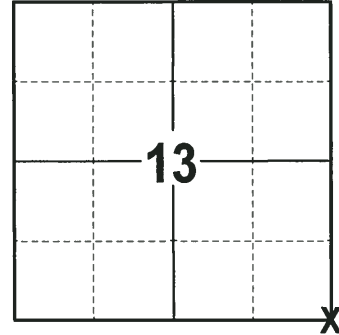
ELEVATION- DATUM

FIELD WORK DATE: 11/02/2017

BASIS FOR MONUMENT LOCATION

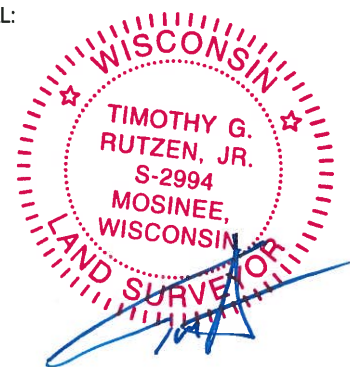
1975 - PLS 1103 FOUND THE EXISTING 2" IRON PIPE WITH ADAMS COUNTY ALUMINUM CAP AT THE CORNER LOCATION. LEFT THIS MONUMENT IN PLACE AND RE-TIED.

2017 - PLS 2994 FOUND A 2-3/8" O.D. IRON PIPE W/ALUMINUM CAP FLUSH WITH THE GROUND SURFACE AND 2 WITNESS TREES. THE MONUMENT AGREES WITH THE EXISTING WITNESS TREES. ACCEPTED THE 2-3/8" O.D. IRON PIPE W/ALUMINUM CAP AS THE CORNER LOCATION. SET 4 NEW TIES AND MEASURED TO THE TIES AND WITNESS TREES.



LOCATION
(INDICATE CORNER BY "X")

SEAL:



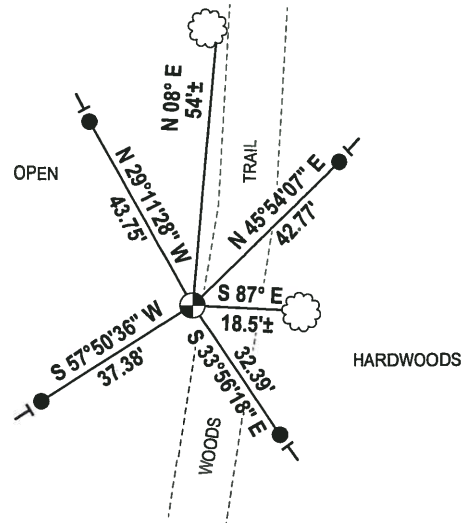
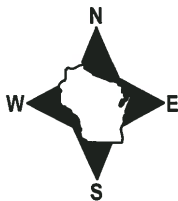
DATA SHOWN HERE ON THIS TIE SHEET IS CORRECT AND COMPLETE TO THE BEST OF MY KNOWLEDGE AND BELIEF.

PROFESSIONAL LAND SURVEYOR

DATE 11-15-17

- TIE SKETCH

NOTE: THE CORNER FALLS 8'± WEST OF THE CENTERLINE OF THE WOODS TRAIL.



- 3/4" x 18" IRON REBAR SET, 1.50#/FT
- ⊙ 2-3/8" O.D. IROD PIPE W/ALUMINUM CAP FOUND
- VINYL "T" POST
- ☁ WITNESS TREE FOUND

ADAMS COUNTY

Survey Monument Record

TYPE OF MONUMENT: EXISTING 2" Iron Pipe / ALUM. CAP.

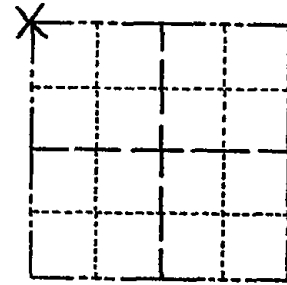
STATE PLANE COORDINATES: N _____
E _____

ELEVATION — M.S.L. DATUM: _____

THETA ANGLE: _____

FIELD BOOK: _____ PAGE _____

CORNER NO. 327
SECTION 19
TOWN 16
RANGE 6



LOCATION
(Indicated by 'X')

SEAL:

BASIS FOR MONUMENT LOCATION

(Use reverse side if necessary)

Show info such as: History of corner, with reference to Vol. and pg, dates, surveyor; exact description of monument replaced; if location computed, by taped or EDM traverse; landowner remarks, etc.

Found existing 2" iron pipe with Adams County aluminum cap. Left this monument in place.

- COR OK 10/20/80 KU SK
- " " 11-4-85 G.R.
- ALL OK 1-30-90 GR-KZ
- " " 2-6-95 JG-GR
- ALL OK 5-17-00-JG
- ALL OK, 2-28-05-SG
- 1 NEW TIE 4-9-10 SS

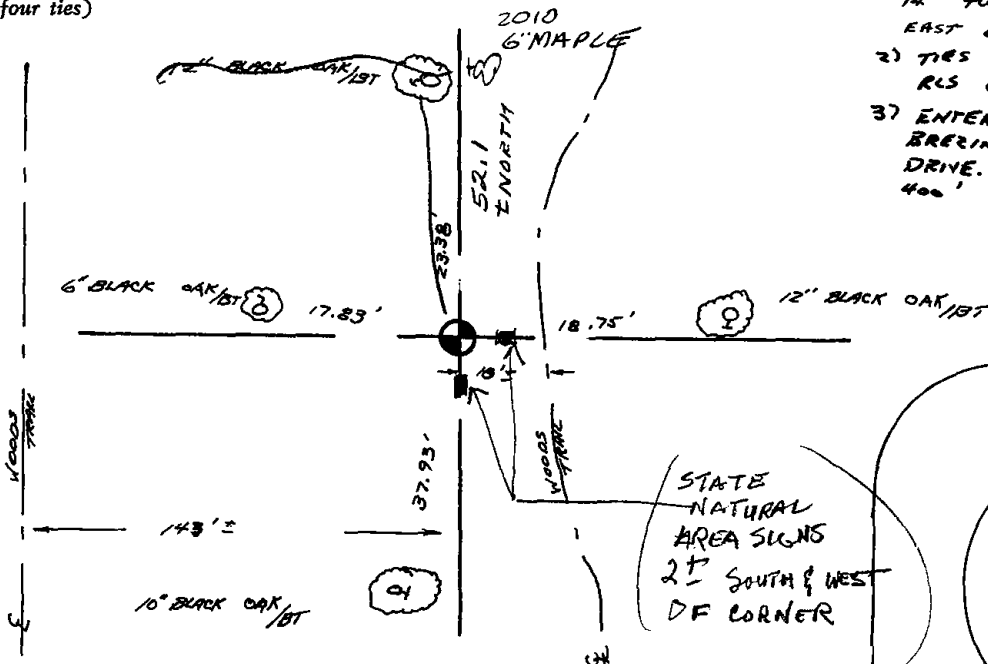


CERTIFIED CORRECT:

Dale C. Hagen
Registered Land Surveyor
DATE: 10-8-75

TIE SKETCH

(Show at least four ties)



NOTE

- 1) DO NOT DISTURB SIGN ON 14" TWIN BLACK OAK - 3' EAST OF CORNER.
- 2) TIES TO NAIL & RLS 878 DISCS.
- 3) ENTER FROM BREZINSKI COTTAGE DRIVE. COTTAGE 400' SSW.

