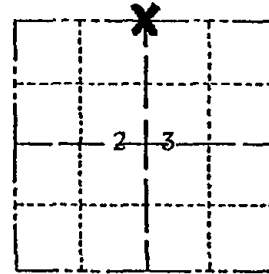


Government Land Corner Certificate

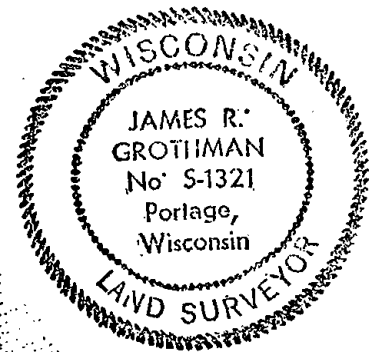
Adams County
 TYPE OF MONUMENT: 30" Harrison
 STATE PLANE COORDINATES: N _____
 E _____
 ELEVATION — M.S.L. DATUM: _____
 THETA ANGLE: _____
 FIELD BOOK: _____ PAGE _____
 DRAWN BY: _____

CORNER NO. 70
 SECTION 23
 TOWN 16
 RANGE 6



LOCATION
(Indicated by 'X')

SEAL:



DATA SHOWN HERE ON
CERTIFIED CORRECT:

James R. Grotthman
 Registered Land Surveyor
 DATE: 7/19/79

Ran EDM/T16 traverse of Section 23, T16N, R6E.

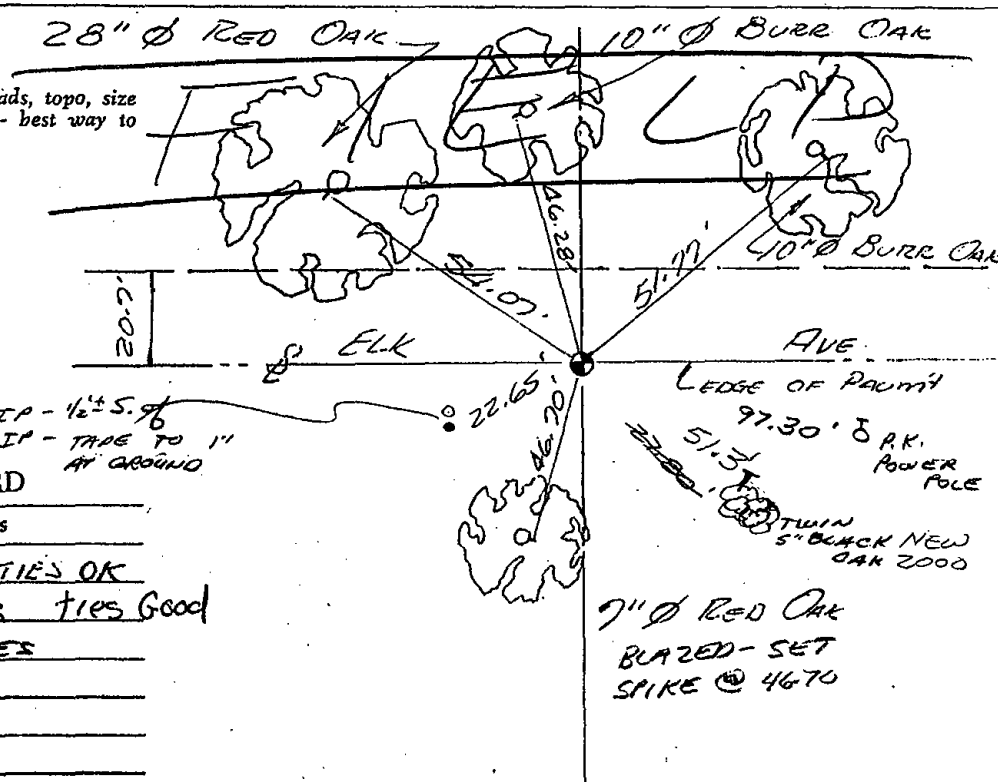
Could not find any evidence of monumentation or resurveys of record. Set corner on line equidistant between section corners.

Harrison set July 11, 1979.

TIE SKETCH

Show at least four ties, also fence lines, roads, topo, size and type of witness trees and if off road - best way to arrive at corner.

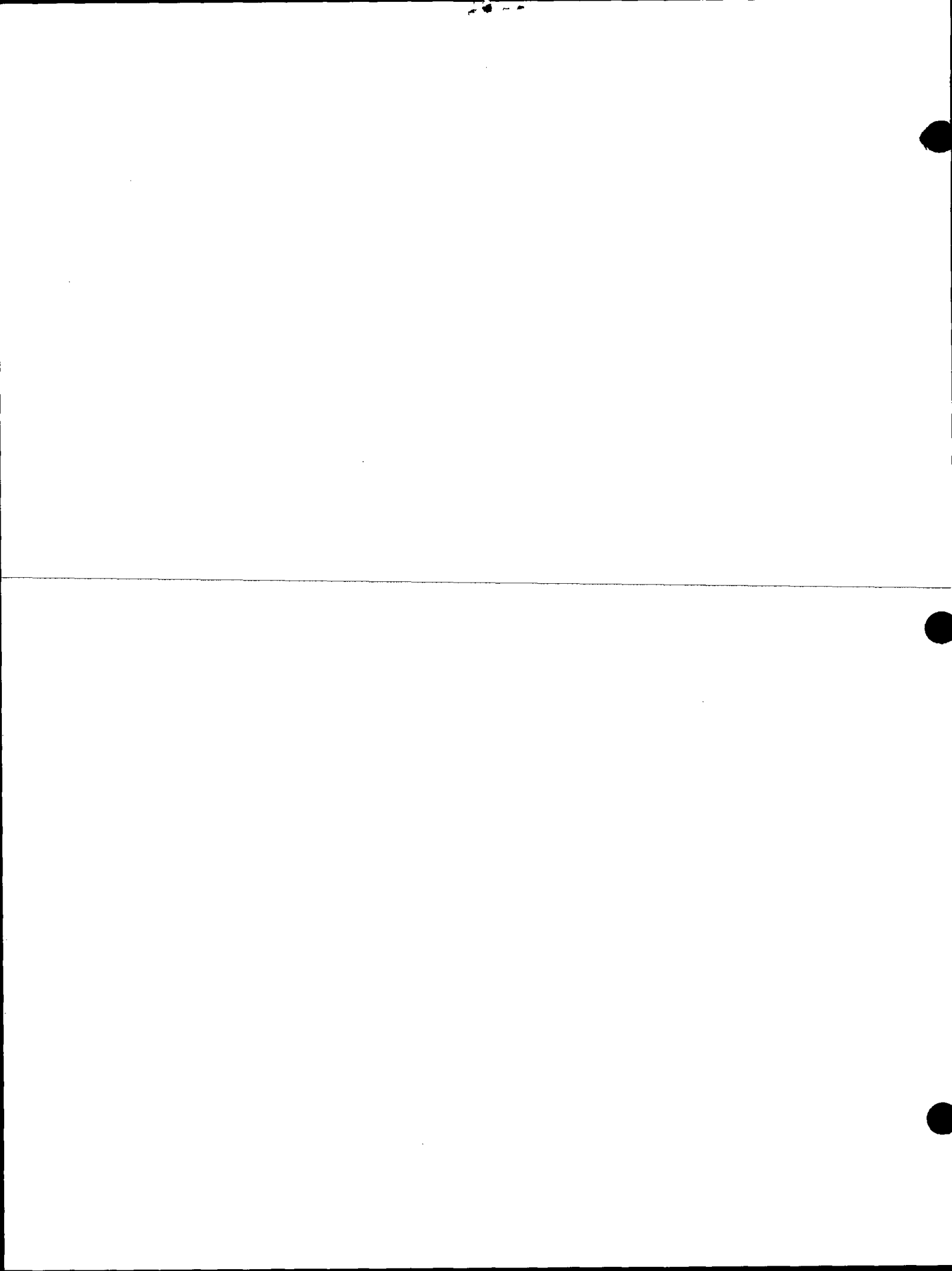
Note: All ties to trees are to PK nails



MAINTENANCE RECORD

Date	Init.	Remarks
10/15/80	KV-RN	MON BEEPS - TIES OK
7-15-85	OK	MON BEEPS TIES GOOD
6-23-90	PC-SS	3 NEW TIES
2-21-00	SS	1 NEW TIE
2-24-05	JG	OK
1-12-10	SS	

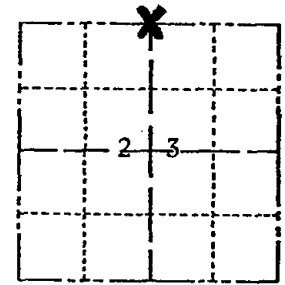
7" Ø RED OAK
 BLAZED - SET
 SPIKE @ 4670



Government Land Corner Certificate

Adams County
 TYPE OF MONUMENT: 30" Harrison
 STATE PLANE COORDINATES: N _____
 E _____
 ELEVATION — M.S.L. DATUM: _____
 THETA ANGLE: _____
 FIELD BOOK: _____ PAGE _____
 DRAWN BY: _____

CORNER NO. 70
 SECTION 23
 TOWN 16
 RANGE 6



LOCATION
(Indicated by 'X')

SEAL:



BASIS FOR MONUMENT LOCATION

Show info such as: History of corner, with reference to Vol. and pg., dates, surveyor; exact description of monument replaced; if location computed, by taped or EDM traverse; landowner remarks, etc. (Use reverse side if necessary)

Ran EDM/T16 traverse of Section 23, T16N, R6E.

Could not find any evidence of monumentation or resurveys of record. Set corner on line equidistant between section corners.

Harrison set July 11, 1979.

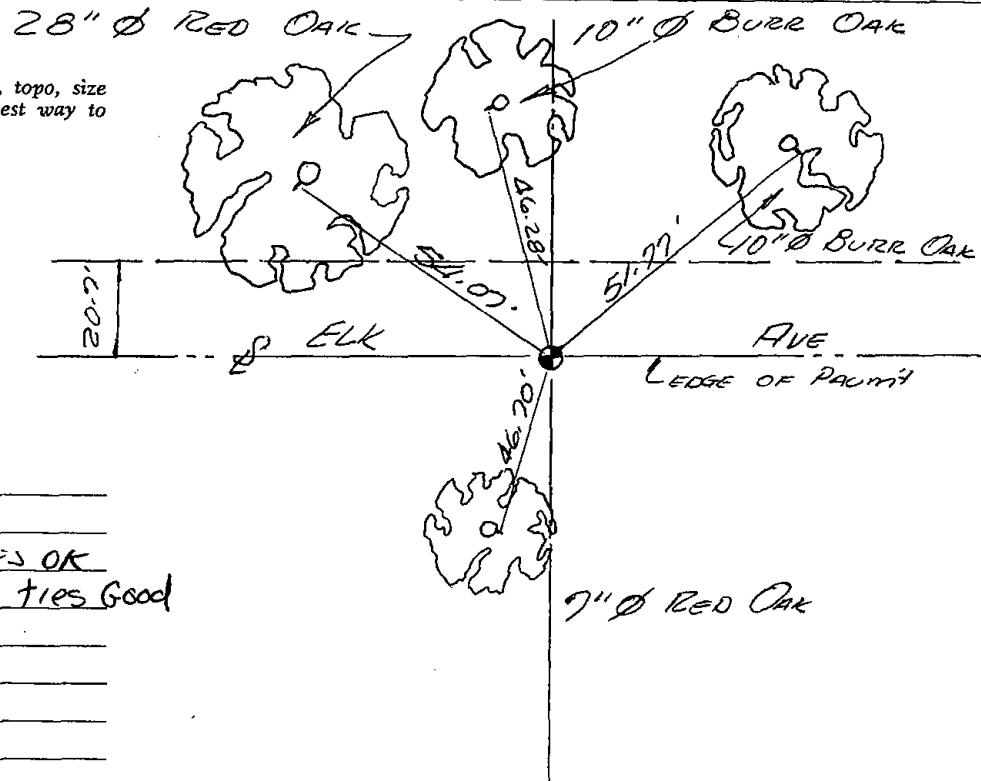
DATA SHOWN HERE ON
CERTIFIED CORRECT:

James R. Grothman
 Registered Land Surveyor
 DATE: 7/19/79

TIE SKETCH

Show at least four ties, also fence lines, roads, topo, size and type of witness trees' and if off road - best way to arrive at corner.

Note: All ties to trees are to PK nails



MAINTENANCE RECORD

Date	Init.	Remarks
10/15/80	KV-RN	MON BEEPS - TIES OK
7-15-85	DK	mon beeps ties Good
SEPT 1985		
1-23-95	OK	JG-GR

