

19
SECTION

16
TOWN

06
RANGE

ADAMS COUNTY

COUNTY CORNER NO: 75

ROMPORTOL ID: 41606192000

PUBLIC LAND SURVEY MONUMENT RECORD

TYPE OF MONUMENT: SURVEY NAIL

ADAMS COUNTY COORDINATES, NAD 83 (2007)

N. 177896.897

E. 531222.242

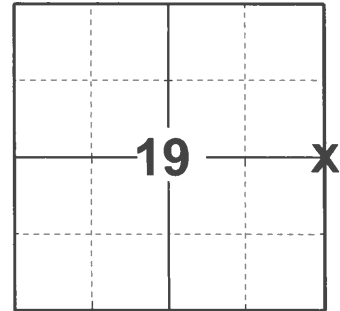
ELEVATION- DATUM

FIELD WORK DATE: 11/18/2020

BASIS FOR MONUMENT LOCATION

2013 - PLS 1452 "PK" NAIL FOUND

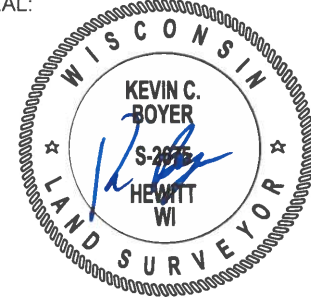
2020 - PLS 2675 FOUND SURVEY NAIL IN THE ROAD SURFACE AND 4 TIES. THE MONUMENT AGREES WITH ALL 4 TIES. ACCEPTED THE SURVEY NAIL AS THE CORNER LOCATION AND MEASURED TO ALL EXISTING TIES.



LOCATION

(INDICATE CORNER BY "X")

SEAL:



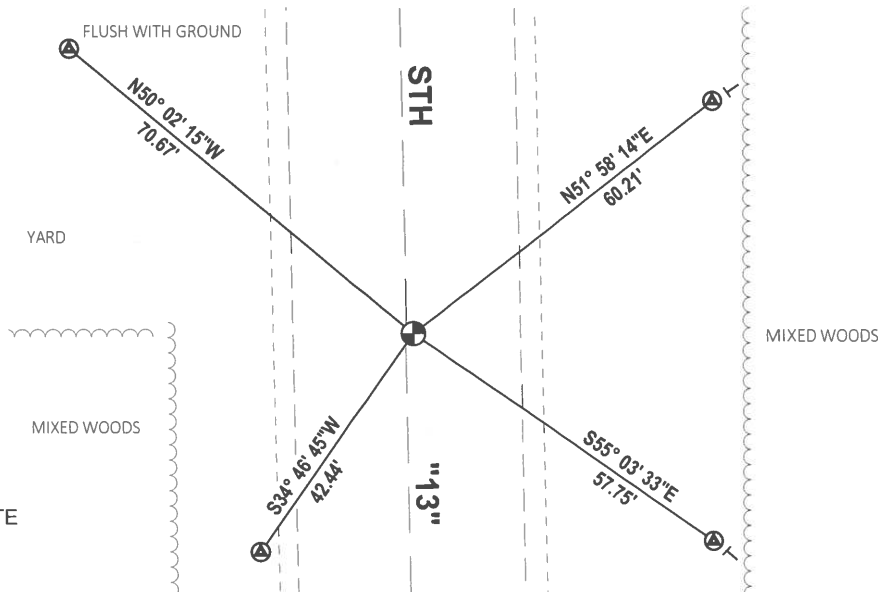
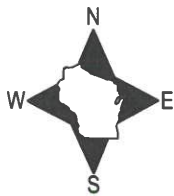
DATA SHOWN HERE ON THIS TIE SHEET IS CORRECT AND COMPLETE TO THE BEST OF MY KNOWLEDGE AND BELIEF.

PROFESSIONAL LAND SURVEYOR

DATE 12/3/2020

- TIE SKETCH

NOTE: THE CORNER LANDS 1± EAST OF STH "13" CENTERLINE.



- ⊙ FOUND WISDOT ALUMINUM CAP IN CONCRETE
- ⊙ FOUND SURVEY NAIL MONUMENT
- ⊖ VINYL "T" POST

