

PUBLIC LAND SURVEY MONUMENT RECORD

TYPE OF MONUMENT: SURVEY NAIL
 ADAMS COUNTY COORDINATES, NAD 83 (2007)

N. 175257.118

E. 531248.855

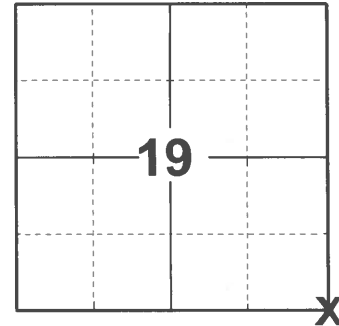
ELEVATION- - - - DATUM - - - -

FIELD WORK DATE: 11/18/2020

BASIS FOR MONUMENT LOCATION

2013 - PLS 1452 "PK" NAIL FOUND

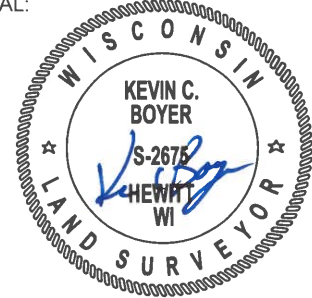
2020 - PLS 2675 FOUND SURVEY NAIL IN THE ROAD SURFACE AND 4 TIES (NW WAS DISTURBED). THE MONUMENT AGREES WITH THE 3 GOOD TIES. ACCEPTED THE SURVEY NAIL AS THE CORNER LOCATION. RE-SET THE NW TIE AND MEASURED TO THE EXISTING TIES.



LOCATION

(INDICATE CORNER BY "X")

SEAL:



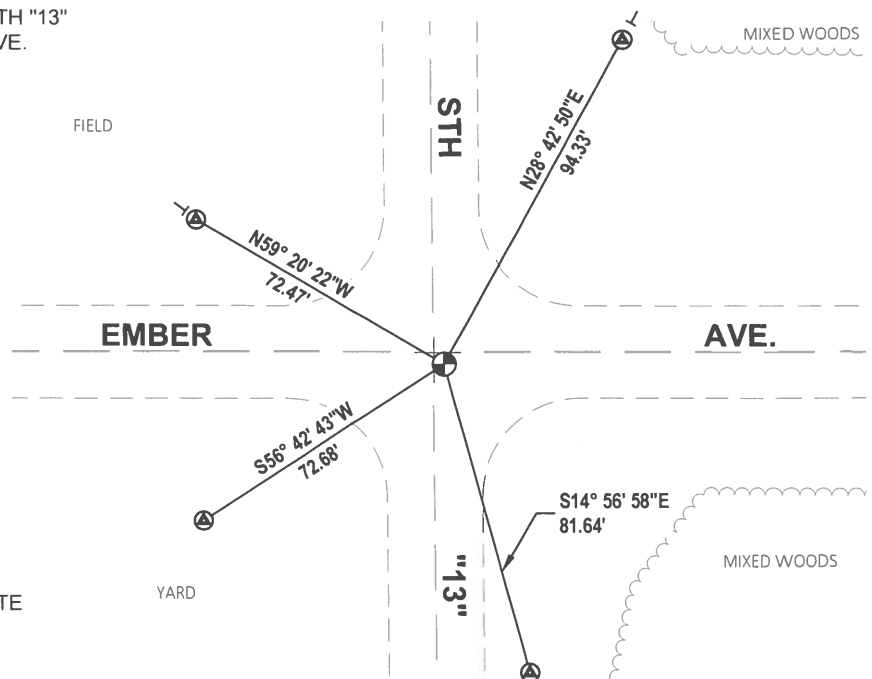
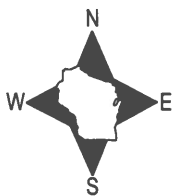
DATA SHOWN HERE ON THIS TIE SHEET IS CORRECT AND COMPLETE TO THE BEST OF MY KNOWLEDGE AND BELIEF.

PROFESSIONAL LAND SURVEYOR

DATE 12/3/2020

- TIE SKETCH

NOTE: THE CORNER LANDS 3'± EAST OF STH "13" CENTERLINE AND 3'± SOUTH OF EMBER AVE. CENTERLINE.



- Ⓐ FOUND WISDOT ALUMINUM CAP IN CONCRETE
- FOUND SURVEY NAIL MONUMENT
- ⊥ VINYL "T" POST

