

22
SECTION

16
TOWN

06
RANGE

ADAMS COUNTY

COUNTY CORNER NO: 89

ROMPORTOL ID: 41606220000

PUBLIC LAND SURVEY MONUMENT RECORD

TYPE OF MONUMENT: HARRISON

ADAMS COUNTY COORDINATES, NAD 83 (2007)

N. 175239.894

E. 547089.881

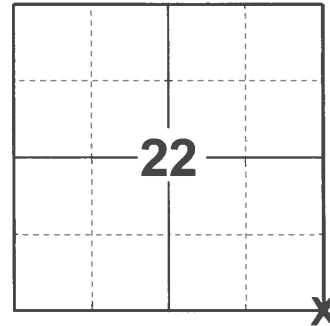
ELEVATION- _____ DATUM _____

FIELD WORK DATE: 12/09/2020

BASIS FOR MONUMENT LOCATION

1973 - PLS 878 FOUND A WELL DEFINED STONE WITH SECTION NUMBERS CARVED/Written ON IT. REPLACED IT WITH A HARRISON ON SEPTEMBER 7, 1972

2020 - PLS 2675 FOUND HARRISON 4"± ABOVE THE GROUND AND 4 WITNESS TREES. THE MONUMENT AGREES WITH ALL 4 WITNESS TREES. ACCEPTED THE HARRISON AS THE CORNER LOCATION. SET 4 NEW TIES AND MEASURED TO THE EXISTING WITNESS TREES.



LOCATION

(INDICATE CORNER BY "X")

SEAL:

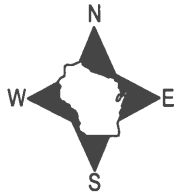


DATA SHOWN HERE ON THIS TIE SHEET IS CORRECT AND COMPLETE TO THE BEST OF MY KNOWLEDGE AND BELIEF.

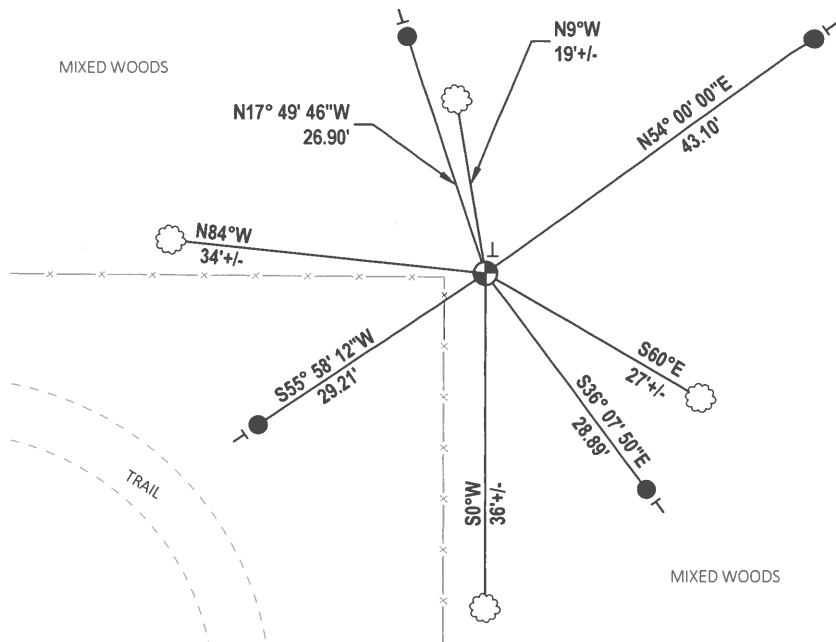
PROFESSIONAL LAND SURVEYOR

DATE 1/18/2021

TIE SKETCH



- SET 3/4" x 18" IRON REBAR, 1.50#/FT
- ⊕ FOUND HARRISON MONUMENT
- ┆ VINYL "T" POST
- ☼ WITNESS TREE



ADAMS COUNTY

Survey Monument Record

TYPE OF MONUMENT: HARRISON MONUMENT

STATE PLANE COORDINATES: N _____

E. _____

ELEVATION — M.S.L. DATUM: _____

THETA ANGLE: _____

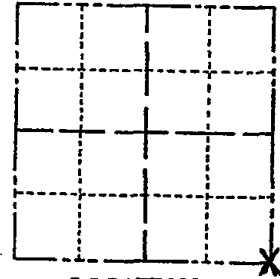
FIELD BOOK: 105 PAGE 73

CORNER NO. 192

SECTION 22

TOWN 16

RANGE 6



LOCATION
(Indicated by 'X')

SEAL:



BASIS FOR MONUMENT LOCATION

(Use reverse side if necessary)

Show info such as: History of corner, with reference to Vol. and pg, dates, surveyor; exact description of monument replaced; if location computed, by taped or EDM traverse; landowner remarks, etc.

carved

Found well defined stone with section numbers written on it and replaced it with a Harrison monument

September 7, 1972

Anthony B. Kiedrowski R.L.S. 878

STONE IN CO. SURVEYOR OFFICE
ON DISPLAY.

Everything O.K. 10-18-75 STS-DM

1 NEW TIE 10-31-85 MB-SS

OK 1-30-90 GR

OK 1/31/95 JG-GR

2-GONE, 2-NEW, 4-5-05, JG

OK 4-9-10 SS

CERTIFIED CORRECT:

Anthony B. Kiedrowski
Registered Land Surveyor

DATE: 1-30-73

TIE SKETCH

(Show at least four ties)

