

25
SECTION

16
TOWN

05
RANGE

ADAMS COUNTY

COUNTY CORNER NO: 100
ROMPORTOL ID: 41605252000

PUBLIC LAND SURVEY MONUMENT RECORD

TYPE OF MONUMENT: HARRISON
ADAMS COUNTY COORDINATES, NAD 83 (2007)

N. 172641.242

E. 525860.294

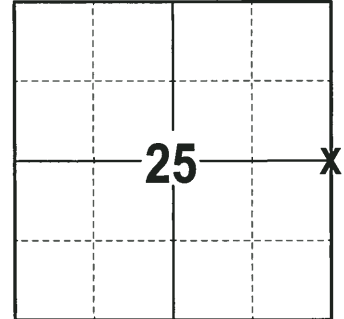
ELEVATION- - - DATUM - -

FIELD WORK DATE: 11/02/2017

BASIS FOR MONUMENT LOCATION

1977 - PLS 1103 RAN EDM/T2 TRAVERSE AROUND SECTION 30 TO DETERMINE THE SEARCH AREA. IN 1976 COUNTY SURVEYOR KIEDROWSKI, EXCAVATED FOR THIS CORNER IN THE ROAD OPPOSITE TO THE FENCE AND FOUND NO EVIDENCE OF THE CORNER, AUTHENTICATING THAT THIS ROAD IS NOT CENTERED ON THE SECTION LINE. RE-ESTABLISHED THE CORNER BY SINGLE PROPORTIONATE MEASUREMENT ON A LINE BETWEEN ADJACENT SECTION CORNERS TO THE NORTH AND SOUTH. SET A HARRISON MONUMENT AT THE CORNER LOCATION AND RE-TIED.

2017 - PLS 2994 FOUND A HARRISON MONUMENT FLUSH WITH THE GROUND SURFACE, 2 WITNESS TREES AND 1 WITNESS. THE MONUMENT AGREES WITH THE EXISTING WITNESSES. ACCEPTED THE HARRISON MONUMENT AS THE CORNER LOCATION. SET 4 NEW TIES AND MEASURED TO THE TIES AND WITNESSES.



LOCATION
(INDICATE CORNER BY "X")

SEAL:



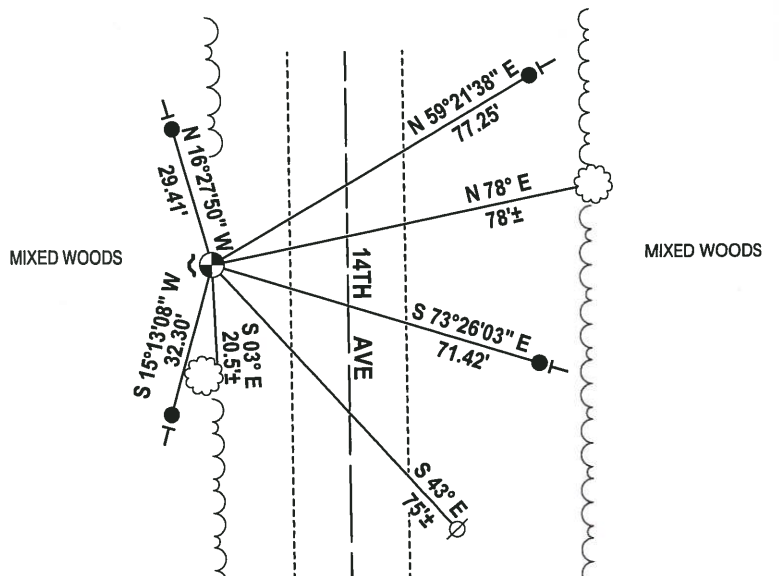
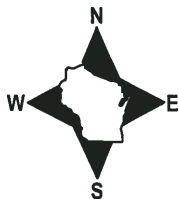
DATA SHOWN HERE ON THIS TIE SHEET IS CORRECT AND COMPLETE TO THE BEST OF MY KNOWLEDGE AND BELIEF.

PROFESSIONAL LAND SURVEYOR

DATE 11-15-17

- TIE SKETCH

NOTE: THE CORNER FALLS 27'± WEST OF THE CENTERLINE OF 14TH AVE.



- 3/4" x 18" IRON REBAR SET, 1.50#/FT
- ⊙ HARRISON FOUND
- ⊗ WITNESS POWER POLE
- ~ STEEL FENCE POST
- VINYL "T" POST
- ☼ WITNESS TREE FOUND

Government Land Corner Certificate

ADAMS County

TYPE OF MONUMENT: HARRISON

STATE PLANE COORDINATES: N _____
E _____

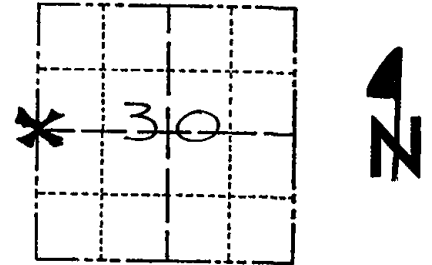
ELEVATION — M.S.L. DATUM: _____

THETA ANGLE: _____

FIELD BOOK: 38 PAGE 43

DRAWN BY: D. C. HAGEN

CORNER NO. 94
SECTION 30
TOWN 16 N
RANGE 6 E



LOCATION
(Indicated by 'X')

BASIS FOR MONUMENT LOCATION

Show info such as: History of corner, with reference to Vol. and pg., dates, surveyor; exact description of monument replaced; if location computed, by taped or EDM traverse; landowner remarks, etc. (Use reverse side if necessary)

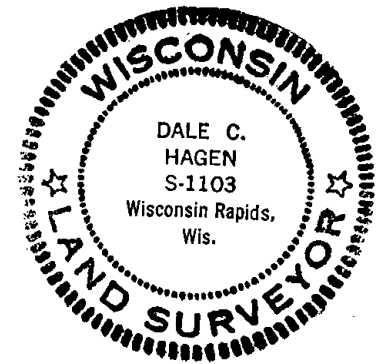
Ran EDM/T2 traverse around Section 30 to determine search areas for investigation.

AB Kiedrowski, County Surveyor, excavated in 1976 for this corner in the road opposite the fence and found nothing for evidence of the corner, thereby authenticating that this road is not centered on the section line.

Re-established corner by single proportionate measure on line between adjacent section corners.

Set Harrison Monument on 5-19-77.

SEAL:



DATA SHOWN HERE ON
CERTIFIED CORRECT:

Dale C. Hagen
Registered Land Surveyor

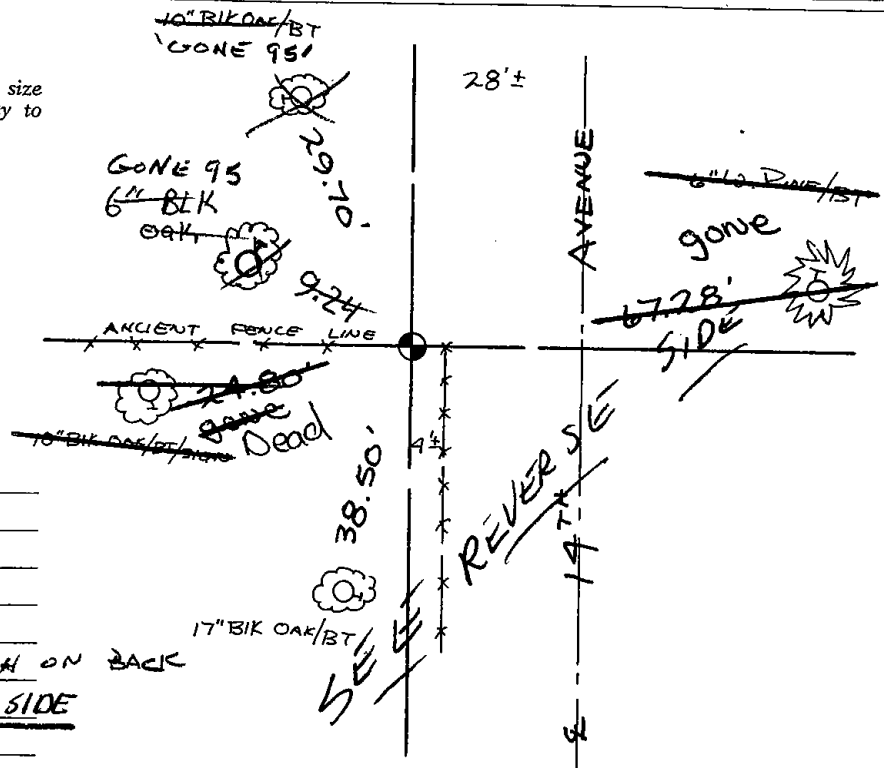
DATE: 5-23-77

TIE SKETCH

Show at least four ties, also fence lines, roads, topo, size and type of witness trees' and if off road - best way to arrive at corner.

NOTE

Ties in trees to nail in disc.



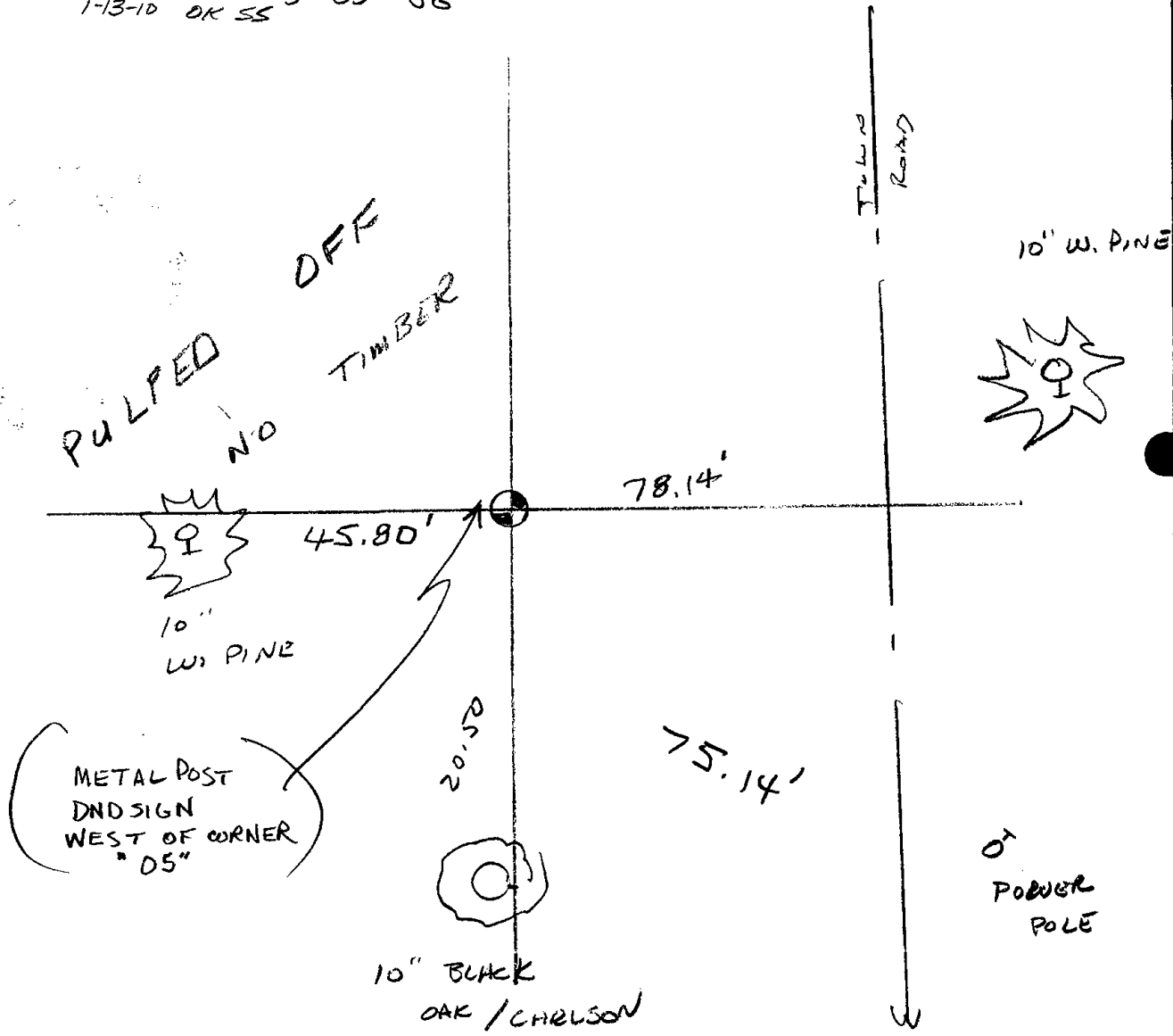
MAINTENANCE RECORD

Date	Init.	Remarks
10/17/80	KV-SK	COR OK
6-26-85	GR-SS	logone 1 new
1-30-90	GR	OK
2-06-95	GRJG	NEW TIE SKETCH ON BACK
4-24-00	JG	OK SEE REVERSE SIDE

(OVER)

2
4

3-NEW 2-6-95 JG-GR
ALL OK 4-24-00-JG
ALL OK 2-25-05-JG
1-13-10 OK SS

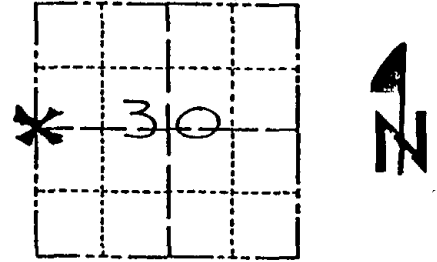


2/06/95
GR

Government Land Corner Certificate

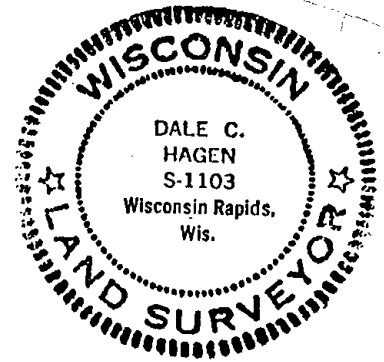
ADAMS County
 TYPE OF MONUMENT: HARRISON
 STATE PLANE COORDINATES: N _____
 E _____
 ELEVATION — M.S.L. DATUM: _____
 THETA ANGLE: _____
 FIELD BOOK: 38 PAGE 43
 DRAWN BY: D.C. HAGEN

CORNER NO. 94
 SECTION 30
 TOWN 16 N
 RANGE 6 E



LOCATION
(Indicated by 'X')

SEAL:



DATA SHOWN HERE ON
CERTIFIED CORRECT:

Dale C. Hagen
Registered Land Surveyor

DATE: 5-23-77

BASIS FOR MONUMENT LOCATION

Show info such as: History of corner, with reference to Vol. and pg., dates, surveyor; exact description of monument replaced; if location computed, by taped or EDM traverse; landowner remarks, etc. (Use reverse side if necessary)

Ran EDM/T2 traverse around Section 30 to determine search areas for investigation.

AB Kiedrowski, County Surveyor, excavated in 1976 for this corner in the road opposite the fence and found nothing for evidence of the corner, thereby authenticating that this road is not centered on the section line.

Re-established corner by single proportionate measure on line between adjacent section corners.

Set Harrison Monument on 5-19-77.

10-13-88 Ken Carlson

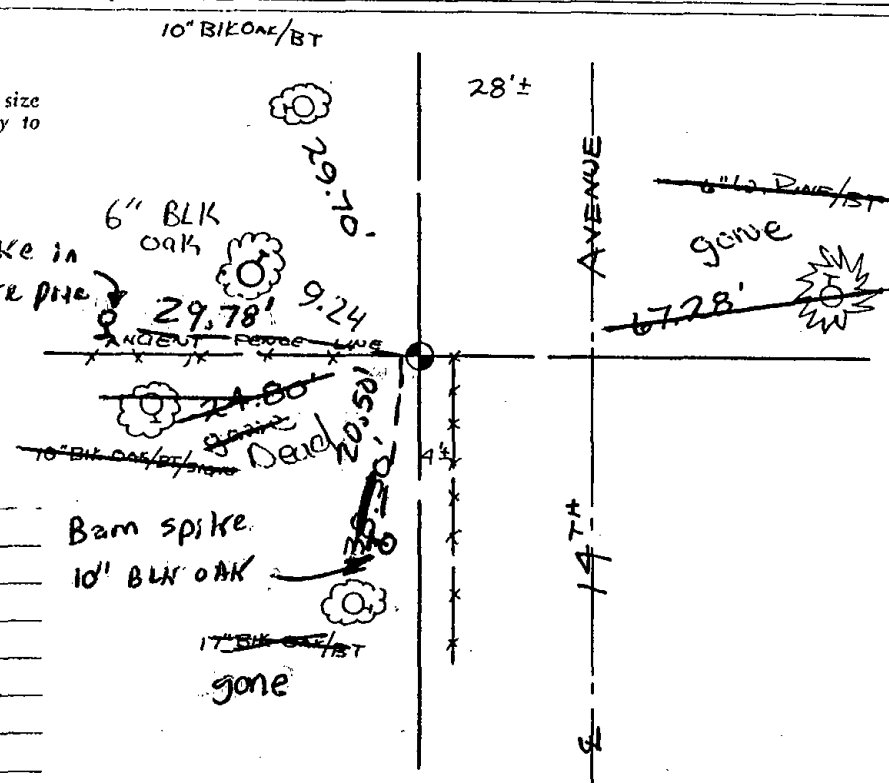
TIE SKETCH

Show at least four ties, also fence lines, roads, topo, size and type of witness trees' and if off road - best way to arrive at corner.

NOTE

Ties in trees to nail in disc.

Barn spike in
8" white pine



MAINTENANCE RECORD

Date	Init.	Remarks
6-26-85	GR-SS	gone / new

Barn spike
10' BLK OAK

gone

