

## PUBLIC LAND SURVEY MONUMENT RECORD

TYPE OF MONUMENT: HARRISON (BROKEN-TOP)  
 ADAMS COUNTY COORDINATES, NAD 83 (2007)

N. 172617.832

E. 557699.544

ELEVATION-      DATUM     

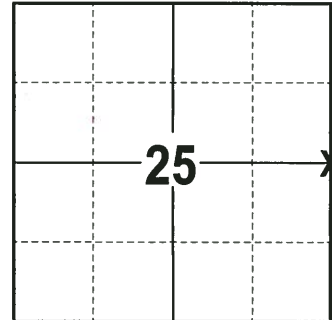
FIELD WORK DATE: 11/16/2017

### BASIS FOR MONUMENT LOCATION

1974 - PLS 776 MACHINE EXCAVATED AND FOUND NOTHING. (RECORDED IN C.S.M. VOL. 1, PG. 71). SET A HARRISON MONUMENT AT THE CALCULATED CORNER LOCATION AND TIED OUT.

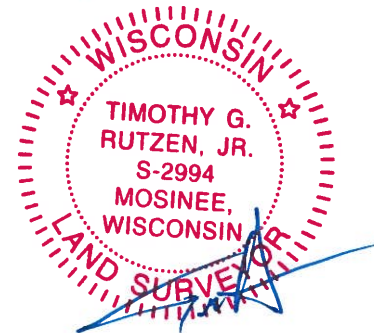
1999 - PLS 1397 EXISTING MONUMENT WAS FOUND AT THE CORNER LOCATION. MONUMENT WAS REMOVED AND RAISED DUE TO RECONSTRUCTION OF C.T.H. B. CORNER WAS RE-TIED.

2017 - PLS 2994 FOUND A HARRISON MONUMENT WITH A BROKEN-TOP 6" BELOW THE ROAD SURFACE, 1 ADDITIONAL PROPERTY IRON AND 2 WITNESS TREES. THE MONUMENT AGREES WITH THE WITNESS TREES. ACCEPTED THE HARRISON MONUMENT WITH A BROKEN-TOP AS THE CORNER LOCATION. SET 3 NEW TIES AND MEASURED TO THE TIES, PROPERTY IRON AND WITNESS TREES.



**LOCATION**  
 (INDICATE CORNER BY "X")

SEAL:



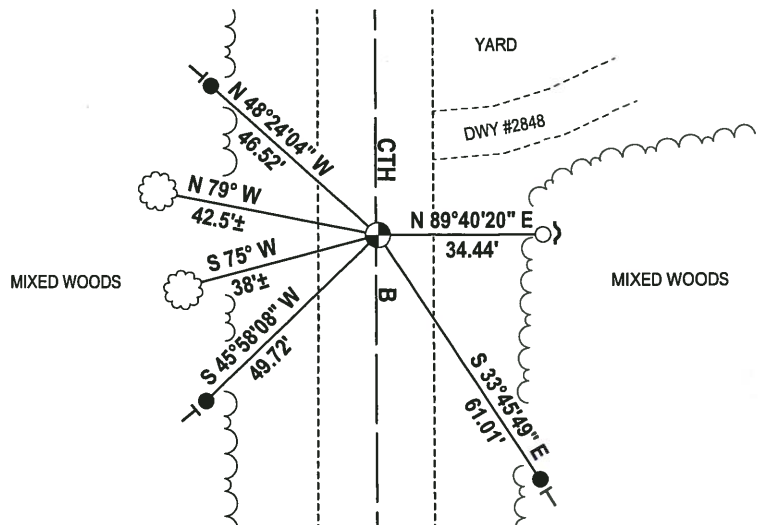
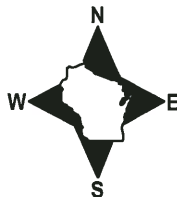
DATA SHOWN HERE ON THIS TIE SHEET IS CORRECT AND COMPLETE TO THE BEST OF MY KNOWLEDGE AND BELIEF.

PROFESSIONAL LAND SURVEYOR

DATE 12-4-17

### - TIE SKETCH -

NOTE: THE CORNER FALLS 0.5'± EAST OF THE CENTERLINE OF CTH B AND 150'± NORTH OF THE CENTERLINE OF EMBER DR.



- 3/4" x 18" IRON REBAR SET, 1.50#/FT
- 3/4" IRON ROD FOUND
- ⊕ HARRISON (BROKEN-TOP) FOUND
- ~ STEEL FENCE POST
- VINYL "T" POST
- ☁ WITNESS TREE FOUND

ADAMS COUNTY

Survey Monument Record

TYPE OF MONUMENT: HARRISON

STATE PLANE COORDINATES: N \_\_\_\_\_

E \_\_\_\_\_

ELEVATION — M.S.L. DATUM: \_\_\_\_\_

THETA ANGLE: \_\_\_\_\_

FIELD BOOK: ADAMS PAGE FILE

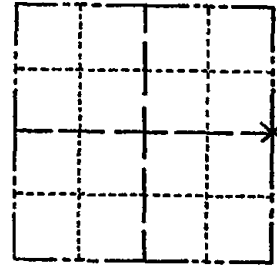
CORNER NO. 528

SECTION 25

TOWN 16

RANGE 6

100



LOCATION  
(Indicated by 'X')

SEAL:



SEE RUSSELL TIE SHEET 7-26-99

BASIS FOR MONUMENT LOCATION

(Use reverse side if necessary)

Show info such as: History of corner, with reference to Vol. and pg, dates, surveyor; exact description of monument replaced; if location computed, by taped or EDM traverse; landowner remarks, etc.

TIES ARE TO 20# SPIKES  
MACHINE EXCAVATED - FOUND NOTHING.  
RECORDED IN C.S.M. VOL. 1, PG 71  
TIE MEASUREMENTS ARE HORIZONTAL

COR. O.K. 10-14-75 SS  
MON. BEEPS TIES OK 10/17/80 KU-SK

ALL OK 7-15-85 O.K.  
OK 1-30-90 GR  
OK 4-17-90 KEN CARLSON

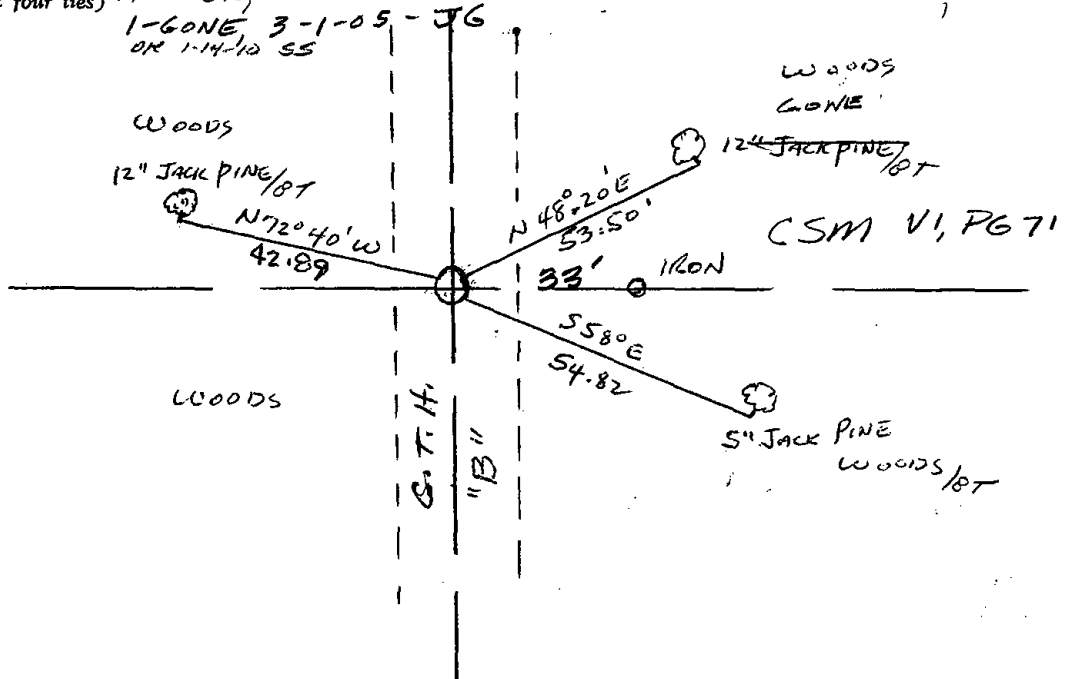
CERTIFIED CORRECT:

Herman Holzmiller  
Registered Land Surveyor 5-776

DATE: 12-16-74

TIE SKETCH ALL OK 1/23/95 JG-GR

(Show at least four ties) ALL OK, SEE ATTACHED TIE SHEET RUSSELL 7-26-99, JG-9-7-00



# ADAMS COUNTY

## Survey Monument Record

TYPE OF MONUMENT: 30" HARRISON MARKER

STATE PLANE COORDINATES: N \_\_\_\_\_

E \_\_\_\_\_

ELEVATION -- M.S.L. DATUM: \_\_\_\_\_

THETA ANGLE: \_\_\_\_\_

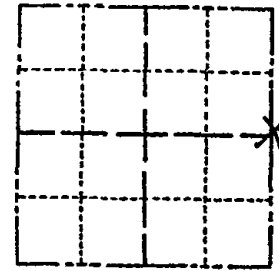
FIELD BOOK: \_\_\_\_\_ PAGE \_\_\_\_\_

CORNER NO. 528

SECTION 25

TOWN 16N

RANGE 6E



LOCATION  
(Indicated by 'X')

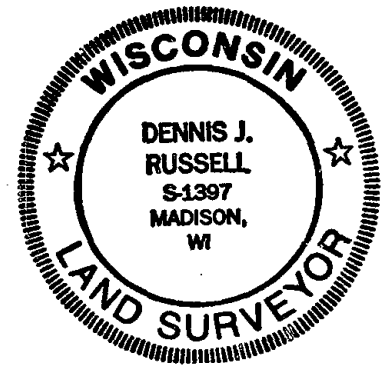
SEAL:

### BASIS FOR MONUMENT LOCATION

(Use reverse side if necessary)

Show info such as: History of corner, with reference to Vol. and pg. dates, surveyor; exact description of monument replaced; if location computed, by taped or EDM traverse; landowner remarks, etc.

Existing Monument was found in place. Monument was removed and raised due to reconstruction of C.T.H. "B". All tie measurements are horizontal measurements unless noted otherwise.



CERTIFIED CORRECT:

*Dennis J. Russell*  
Registered Land Surveyor

DATE: July 26, 1999

### TIE SKETCH

(Show at least four ties)

ALL MEASUREMENTS ARE HORIZONTAL.

