

30
SECTION

16
TOWN

06
RANGE

ADAMS COUNTY

COUNTY CORNER NO: 102

ROMPORTOL ID: 41606300020

PUBLIC LAND SURVEY MONUMENT RECORD

TYPE OF MONUMENT: HARRISON
ADAMS COUNTY COORDINATES, NAD 83 (2007)

N. 169977.561

E. 528617.199

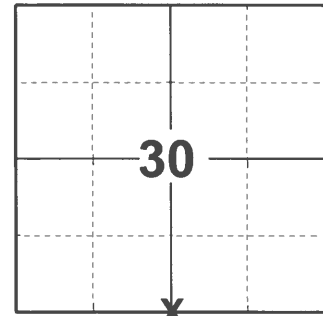
ELEVATION- DATUM

FIELD WORK DATE: 11/24/2020

BASIS FOR MONUMENT LOCATION

1971 - PLS 981 FOUND "PK" NAIL AND ST HARRISON.

2020 - PLS 2675 FOUND HARRISON 6"± BELOW THE ROAD SURFACE AND 1 WITNESS. THE MONUMENT AGREES WITH THE EXISTING WITNESS. ACCEPTED THE HARRISON AS THE CORNER LOCATION. SET 4 NEW TIES AND MEASURED TO THE WITNESS.



LOCATION

(INDICATE CORNER BY "X")

SEAL:



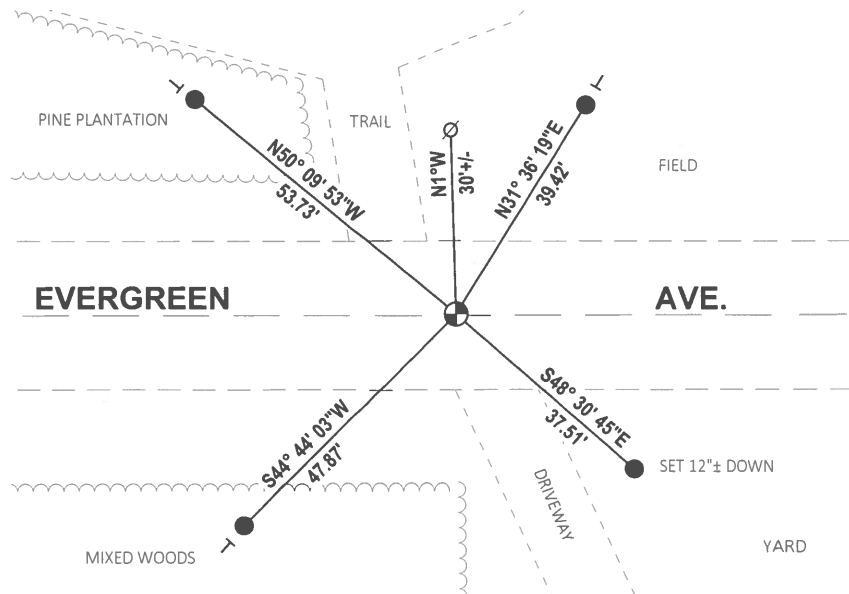
DATA SHOWN HERE ON THIS TIE SHEET IS CORRECT AND COMPLETE TO THE BEST OF MY KNOWLEDGE AND BELIEF.

PROFESSIONAL LAND SURVEYOR

DATE 12/3/2020

- TIE SKETCH -

NOTE: THE CORNER LANDS ON THE CENTERLINE OF EVERGREEN AVE.



- SET 3/4" x 18" IRON REBAR, 1.50#/FT
- ⊕ FOUND HARRISON MONUMENT
- ⊙ WITNESS POWER POLE
- ┌ VINYL "T" POST