

36  
SECTION

16  
TOWN

06  
RANGE

# ADAMS COUNTY

COUNTY CORNER NO: 120  
ROMPORTOL ID: 41606362000

## PUBLIC LAND SURVEY MONUMENT RECORD

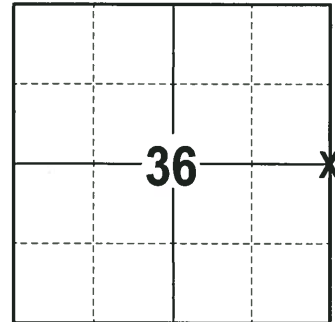
TYPE OF MONUMENT: 1-1/4" O.D. IRON PIPE IN CONCRETE  
ADAMS COUNTY COORDINATES, NAD 83 (2007)

N. 167342.958

E. 557715.724

ELEVATION-      DATUM     

FIELD WORK DATE: 11/16/2017



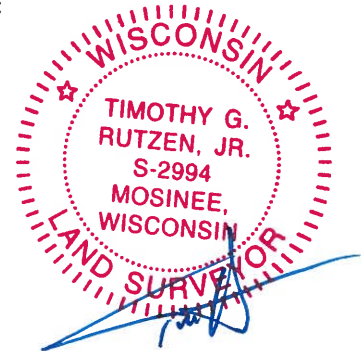
### BASIS FOR MONUMENT LOCATION

1975 - PLS 1103 RAN EDM/TRANSIT TRAVERSE AROUND SECTION 36-16-6 AND SECTION 1-15-6 TO DETERMINE SEARCH AREAS. FOUND EXISTING CONCRETE MONUMENT WITH A BRASS CAP WITH INCORRECT CORNER MARKINGS ON TOP, SET BY PAST COUNTY SURVEYOR PHILLIPS. ACCEPTED SAME AS CORNER AND TIED OUT.

2017 - PLS 2994 FOUND A 1-1/4" O.D. IRON PIPE IN CONCRETE 6" BELOW THE GROUND SURFACE, 2 TIES AND 1 WITNESS TREE. THE MONUMENT AGREES WITH THE EXISTING TIES AND WITNESS TREE. ACCEPTED THE 1-1/4" O.D. IRON PIPE IN CONCRETE AS THE CORNER LOCATION. SET 2 NEW TIES AND MEASURED TO THE TIES AND WITNESS TREE.

**LOCATION**  
(INDICATE CORNER BY "X")

SEAL:



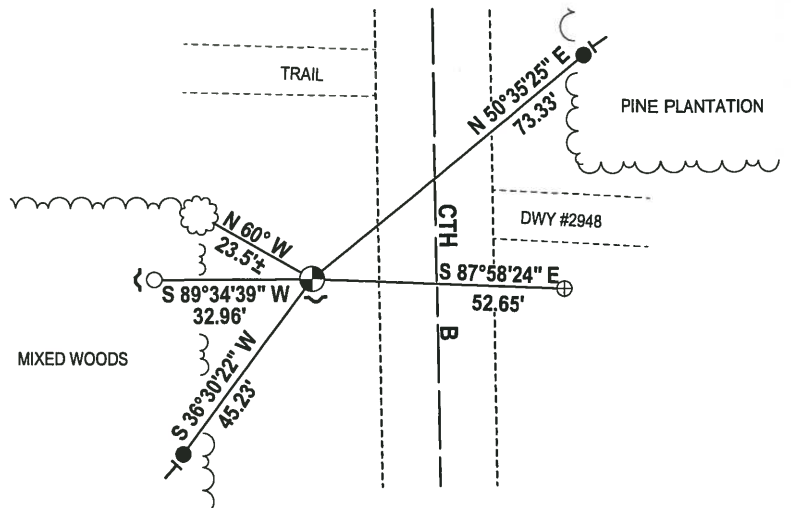
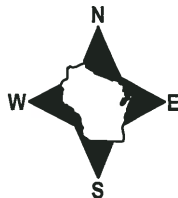
DATA SHOWN HERE ON THIS TIE SHEET IS CORRECT AND COMPLETE TO THE BEST OF MY KNOWLEDGE AND BELIEF.

PROFESSIONAL LAND SURVEYOR

DATE 12-4-17

### - TIE SKETCH -

NOTE: THE CORNER FALLS 26± WEST OF THE CENTERLINE OF CTH B.



- 3/4" x 18" IRON REBAR SET, 1.50#/FT
- 3/4" IRON ROD FOUND
- ⊕ 1-1/4" O.D. IROD PIPE FOUND
- ⊕ 1-1/4" O.D. IRON PIPE IN CONCRETE FOUND
- ~ STEEL FENCE POST
- VINYL "T" POST
- ☁ WITNESS TREE FOUND

**ADAMS COUNTY**

**Survey Monument Record**

TYPE OF MONUMENT: ~~Existing Conc. Monument with Brass Cap~~ <sup>1" PIPE</sup>

STATE PLANE COORDINATES: N \_\_\_\_\_

E \_\_\_\_\_

ELEVATION — M.S.L. DATUM: \_\_\_\_\_

THETA ANGLE: \_\_\_\_\_

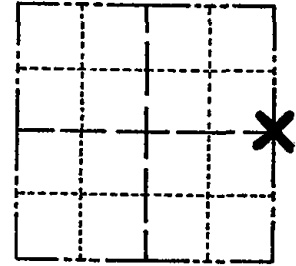
FIELD BOOK: \_\_\_\_\_ PAGE \_\_\_\_\_

CORNER NO. 704 <sup>(120)</sup>

SECTION 36

TOWN 16

RANGE 6



LOCATION  
(Indicated by 'X')

SEAL:

**BASIS FOR MONUMENT LOCATION**

(Use reverse side if necessary)

Show info such as: History of corner, with reference to Vol. and pg, dates, surveyor; exact description of monument replaced; if location computed, by taped or EDM traverse; landowner remarks, etc.

Ran EDM/transit traverse around Section 36-16-6 and Section 1-15-6 to determine search areas.

Found existing concrete monument with brass cap with incorrect corner markings on top, of type set by past County Surveyor Phillips.

Accepted same as corner and tied out.

COR OK 10/20/80 KU SK  
ALL OK 7-15-85 D.K.  
ALL OK 2-12-90 KZ-GR  
ALL OK 1/23/95 JG-GR

1-NEW, 9-7-00, JG  
1-NEW, 3-1-05-JG  
1-14-10 SS



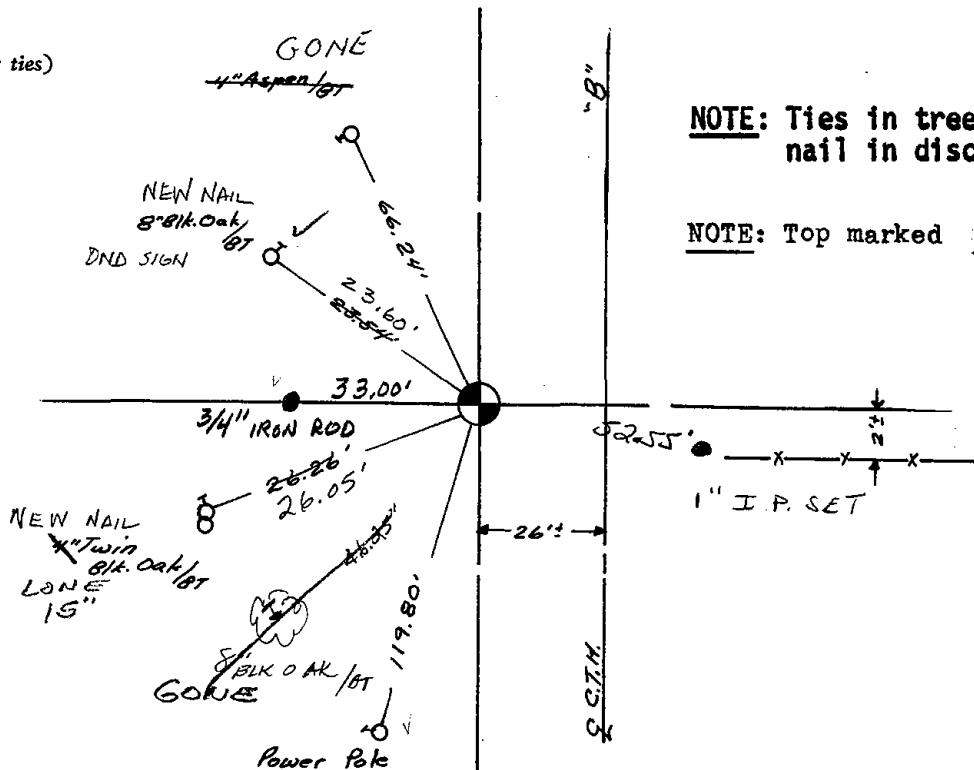
CERTIFIED CORRECT

*Dale C. Hagen*  
Registered Land Surveyor

DATE: 7/23/75

**TIE SKETCH**

(Show at least four ties)



**NOTE:** Ties in trees to nail in disc.

**NOTE:** Top marked  $\frac{7}{18}$

