

34
SECTION

16
TOWN

06
RANGE

ADAMS COUNTY

COUNTY CORNER NO: 129
ROMPORTOL ID: 41606340000

PUBLIC LAND SURVEY MONUMENT RECORD

TYPE OF MONUMENT: HARRISON
ADAMS COUNTY COORDINATES, NAD 83 (2007)

N. 164674.399

E. 547155.939

ELEVATION- DATUM

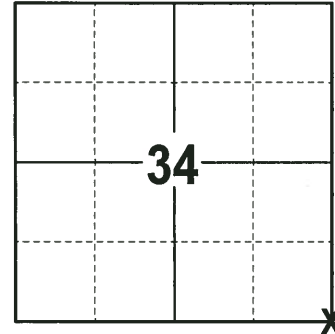
FIELD WORK DATE: 11/15/2017

BASIS FOR MONUMENT LOCATION

1978 - 922 THOROUGHLY SEARCHED A LARGE AREA IN A FIELD FOR EVIDENCE OF THE ORIGINAL CORNER AND WITNESS. ALSO SEARCHED FOR M.C. SMITH'S BEARING TREE AND FOUND NO EVIDENCE. SET HARRISON MONUMENT ONLINE AND EQUADISTANT FROM THE SOUTH 1/4 CORNER OF SECTION 34 TO THE SOUTH 1/4 CORNER OF SECTION 35 AND TIED OUT.

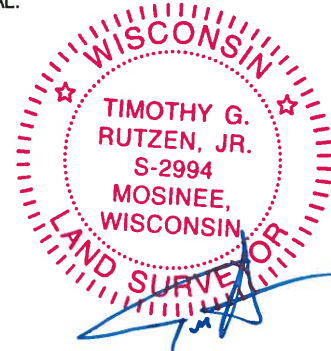
1985 - PLS 878 THIS TIE SHEET SHOWS THE RELATIONSHIP BETWEEN THE SE CORNER OF SECTION 34, T16N, R6E, AS SET BY MID-STATE ASSOCIATES AND THE STONE SET BY M.C. SMITH IN 1923. THE LAND OWNER TO THE SOUTH, CLINTON STONE, WAS SHOWN THE SITUATION AND IS AWARE THAT HE HAS A LEGITIMATE CLAIM TO THE LAND BETWEEN THE LINE AS SET BY MID-STATE AND THE LINE AS SET BY M.C. SMITH. RE-TIED CORNER.

2017 - PLS 2994 FOUND A HARRISON MONUMENT 4" ABOVE THE SURFACE, THE STONE SET BY M.C. SMITH, 2 TIES AND 1 WITNESS TREE. THE MONUMENT AGREES WITH THE EXISTING TIES AND WITNESS TREE. THE CORNER LOCATION MONUMENTED WITH THE HARRISON HAS BEEN HELD AND ACCEPTED AS THE CORNER SINCE 1978. ACCEPTED THE HARRISON MONUMENT AS THE CORNER LOCATION. SET 2 NEW TIES AND MEASURED TO THE TIES, M.C. SMITH STONE AND WITNESS TREE.



LOCATION
(INDICATE CORNER BY "X")

SEAL:



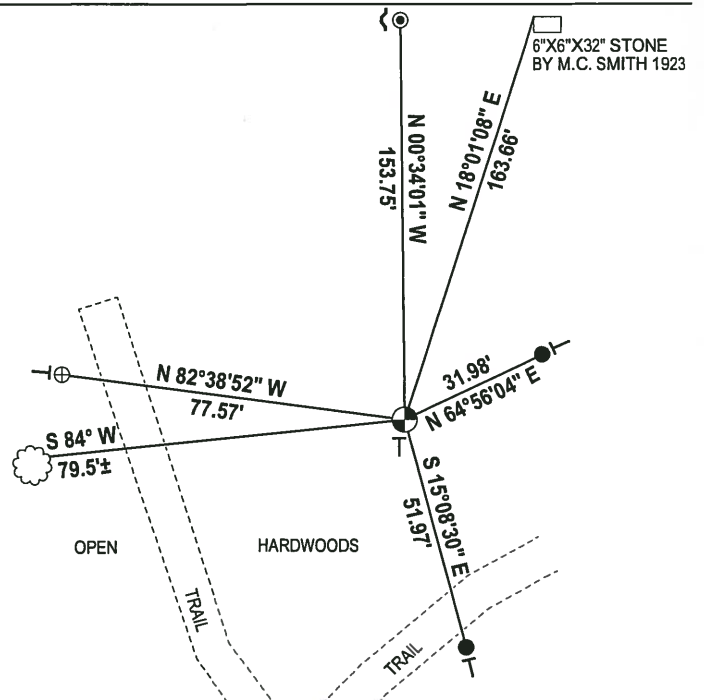
DATA SHOWN HERE ON THIS TIE SHEET IS CORRECT AND COMPLETE TO THE BEST OF MY KNOWLEDGE AND BELIEF.

PROFESSIONAL LAND SURVEYOR

DATE 12-4-17

- TIE SKETCH -

NOTE: THE CORNER FALLS 41± NORTH OF THE CENTERLINE OF THE EAST-WEST TRAIL AND 58± EAST OF THE NORTH-SOUTH TRAIL.



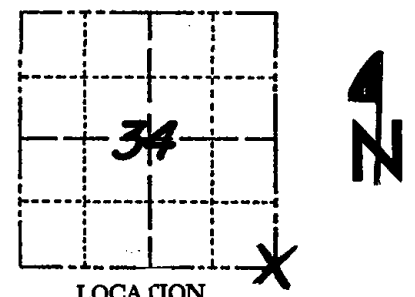
- 3/4" x 18" IRON REBAR SET, 1.50#/FT
- ⊕ 1-1/4" O.D. IROD PIPE FOUND
- ⊙ 1" O.D. IRON PIPE FOUND
- ⊙ HARRISON FOUND
- STEEL FENCE POST
- VINYL "T" POST
- ☼ WITNESS TREE FOUND

Government Land Corner Certificate

ADAMS County

CORNER NO. 129
 SECTION 34
 TOWN 16 N
 RANGE 6 E

TYPE OF MONUMENT: _____
 STATE PLANE COORDINATES: N _____
 E _____
 ELEVATION — M.S.L. DATUM: _____
 THETA ANGLE: _____
 FIELD BOOK: 567 PAGE 24
 DRAWN BY: N. SQUIRES



LOCATION
(Indicated by 'X')

BASIS FOR MONUMENT LOCATION

Show info such as: History of corner, with reference to Vol. and pg., dates, surveyor; exact description of monument replaced; if location computed, by taped or EDM traverse; landowner remarks, etc. (Use reverse side if necessary)

THOROUGHLY SEARCHED A LARGE AREA IN FIELD FOR EVIDENCE OF ORIGINAL CORNER AND WITNESS ALSO SEARCHED FOR M.C. SMITH B.T. & COULD FIND NO EVIDENCE. SET THIS CORNER ON LINE & EQUA-DISTANT FROM THE SOUTH 1/4 CORNER OF SECTION 34 TO THE S 1/4 CORNER OF SECTION 35. EDM - THEODOLITE TRAVERSE.

OK
ABK
1997

SEAL:



DATA SHOWN HERE ON CERTIFIED CORRECT:

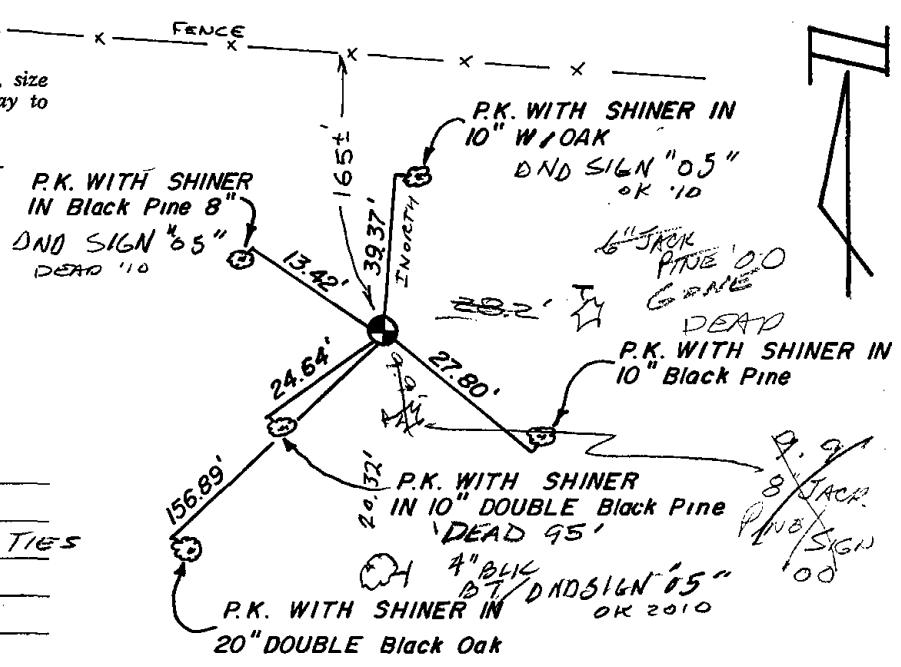
Frederic W. Zietlow
 Registered Land Surveyor

DATE: 8-16-78

TIE SKETCH

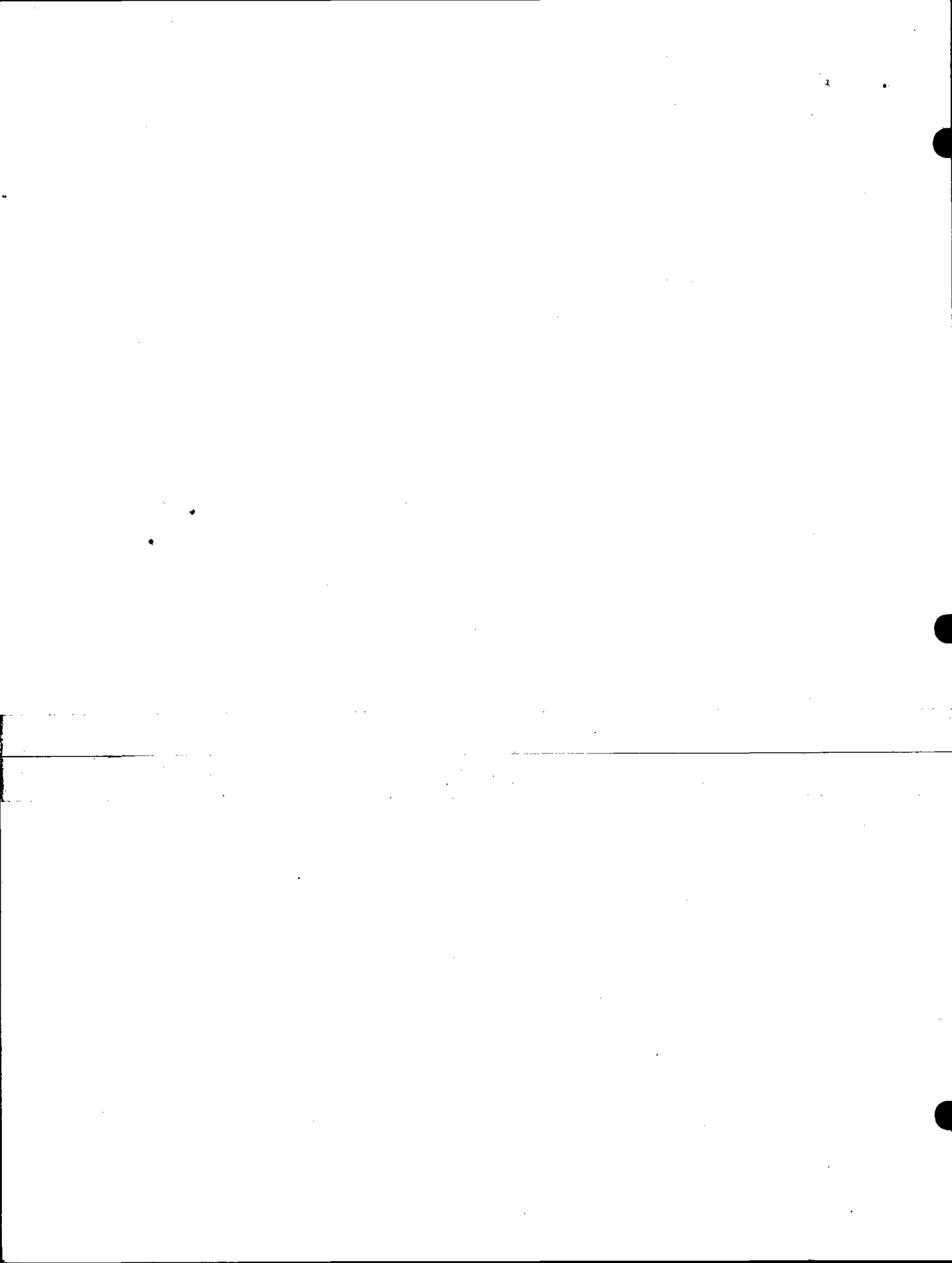
Show at least four ties, also fence lines, roads, topo, size and type of witness trees' and if off road - best way to arrive at corner.

SEE ABK, TIE SHEET 5-9-1985 FOR ADDITIONAL INFORMATION



MAINTENANCE RECORD

Date	Init.	Remarks
11-4-85	GR	OK - SEE K.E.D. TIES
2-7-90	GR	OK
2-8-95	JG	OK
2-17-00	SS	2 NEW TIES
4-5-05	JG	1-GONE, 1-NEW
3-22-10	SS	2 NEW - SEE ABK TIE SHEET



Government Land Corner Certificate

ADAMS County

TYPE OF MONUMENT: HARRISON

STATE PLANE COORDINATES: N _____
E _____

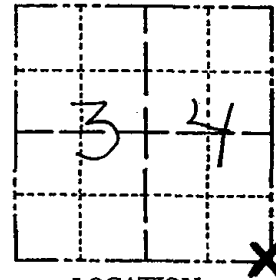
ELEVATION — M.S.L. DATUM: _____

THETA ANGLE: _____

FIELD BOOK: FILE PAGE _____

DRAWN BY: A. B. K.

CORNER NO. 129
SECTION 34
TOWN 16
RANGE 6



LOCATION
(Indicated by 'X')

BASIS FOR MONUMENT LOCATION

Show info such as: History of corner, with reference to Vol. and pg., dates, surveyor; exact description of monument replaced; if location computed, by taped or EDM traverse; landowner remarks, etc. (Use reverse side if necessary)

This tie sheet shows the relationship between the SE corner of Section 34, T16N, R6E, as set by Mid-State Associates and the stone set by M.C. Smith in 1923. In the survey of the SE $\frac{1}{4}$ of the SE $\frac{1}{4}$ of Section 34, the town line as set by Mid-State was held. Landowner to the South, Clinton Stone, was shown the situation and is aware that he has a legitimate claim to the land between the line as set by Mid-State and the line as set by M.C. Smith.

See Section folder for more information.

SEAL:



DATA SHOWN HERE ON
CERTIFIED CORRECT:

Anthony B. Kiedrowski
Registered Land Surveyor

DATE: 5/9/85

TIE SKETCH

Show at least four ties, also fence lines, roads, topo, size and type of witness trees' and if off road - best way to arrive at corner.

