

36
SECTION

17
TOWN

06
RANGE

ADAMS COUNTY

COUNTY CORNER NO: 133

ROMPORTOL ID: 41706360000

PUBLIC LAND SURVEY MONUMENT RECORD

TYPE OF MONUMENT: HARRISON
ADAMS COUNTY COORDINATES, NAD 83 (2007)

N. 192510.349

E. 557685.427

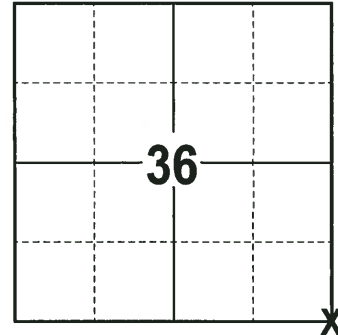
ELEVATION- _____ DATUM _____

FIELD WORK DATE: 11/21/2017

BASIS FOR MONUMENT LOCATION

1973 - PLS 878 MADE MEASUREMENTS A MILE TO THE EAST, WEST AND SOUTH COMPARED DISTANCES TO ORIGINAL NOTES AND C&NW RAILROAD MAP. M.C. SMITH SAID THIS CORNER WAS MISSING IN 1910 AND HE DID NOT RE-SET THE CORNER. EXCAVATED CONSIDERABLE AREA WITH BACKHOE AND FOUND NO EVIDENCE OF CORNER.

2017 - PLS 2994 FOUND A HARRISON MONUMENT 10" BELOW THE ROAD SURFACE, 1 PROPERTY IRON USED AS A TIE AND 2 WITNESSES. THE MONUMENT AGREES WITH THE PROPERTY IRON AND WITNESSES. ACCEPTED THE HARRISON MONUMENT AS THE CORNER LOCATION. SET 3 NEW TIES AND MEASURED TO THE TIES AND WITNESSES.



LOCATION
(INDICATE CORNER BY "X")

SEAL:



DATA SHOWN HERE ON THIS TIE SHEET IS CORRECT AND COMPLETE TO THE BEST OF MY KNOWLEDGE AND BELIEF.

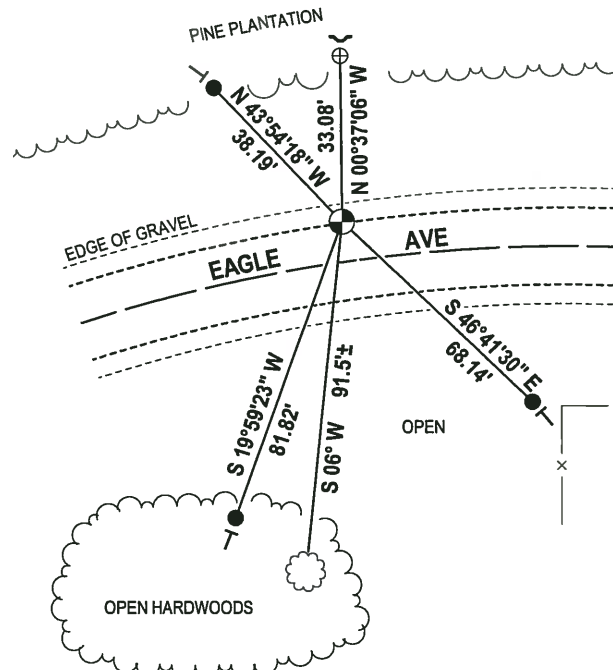
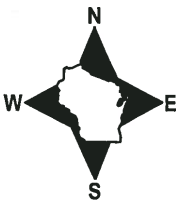
PROFESSIONAL LAND SURVEYOR

DATE 12-21-17

- TIE SKETCH

NOTE 1: THE CORNER FALLS 10'± NORTH OF THE CENTERLINE OF EAGLE AVE.

NOTE 2: FOUND WITNESS, A NAIL WITH WASHER IN A FENCE POST N02°E, A DISTANCE 33.4'.



- 3/4" x 18" IRON REBAR SET, 1.50#/FT
- ⊕ 1-1/4" O.D. IROD PIPE FOUND
- ⊙ HARRISON FOUND
- ~ STEEL FENCE POST
- └ VINYL "T" POST
- ☁ WITNESS TREE FOUND

ADAMS COUNTY

Survey Monument Record

TYPE OF MONUMENT: Harrison

STATE PLANE COORDINATES: N _____

E _____

ELEVATION — M.S.L. DATUM: _____

THETA ANGLE: _____

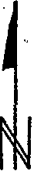
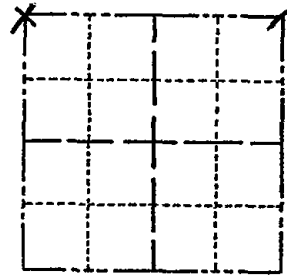
FIELD BOOK: 108 PAGE 122

CORNER NO. 333

SECTION 6

TOWN 16

RANGE 7



LOCATION
(Indicated by 'X')

SEAL:



BASIS FOR MONUMENT LOCATION

(Use reverse side if necessary)

Show info such as: History of corner, with reference to Vol. and pg, dates, surveyor; exact description of monument replaced; if location computed, by taped or EDM traverse; landowner remarks, etc.

Made measurements a mile to East & West & South. Compared with original notes and C&NW RR maps. M.C. Smith said this corner was missing in 1910 and that he did not recast it. Excavated considerable area with backhoe but found nothing.

CORNER	O.K.	2-22-77	GR-SS
"	"	3-22-82	"
"	"	11-26-86	GR
"	"	12-26-91	LT-GR

CERTIFIED CORRECT:

Anthony B. Kiedrowski
Registered Land Surveyor

DATE: 9-5-73

TIE SKETCH

(Show at least four ties)

3 NEW TIES 1-6-97 J6-55
OK, 12-14-01 - M.L.
OK 1-24-07 - J6
OK 01-17-12 MS

