

PUBLIC LAND SURVEY MONUMENT RECORD

TYPE OF MONUMENT: HARRISON (BROKEN TOP)
 ADAMS COUNTY COORDINATES, NAD 83 (2007)

N. 192507.217

E. 562681.830

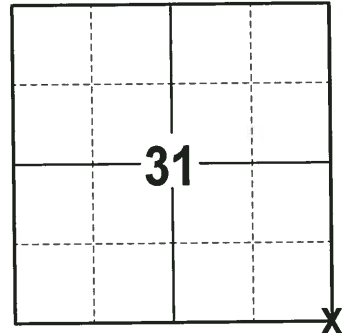
ELEVATION- DATUM

FIELD WORK DATE: 12/06/2017

BASIS FOR MONUMENT LOCATION

1973 - PLS 878 EXCAVATED A LARGE AREA AT THE CENTERLINE OF EAGLE AVE OPPOSITE OF BOTH ROADS TO THE NORTH AND SOUTH. FOUND NO EVIDENCE OF THE CORNER. LOCATION DETERMINED AFTER TRAVERSING SECTIONS 5, 6 AND 7. SET A HARRISON MONUMENT AT THE CALCULATED LOCATION AND TIED OUT.

2017 - PLS 2994 FOUND A MAG NAIL IN THE SURFACE OF THE ROAD REMOVED THE MAG NAIL AND FOUND A HARRISON MONUMENT WITH A BROKEN-TOP 10" BELOW THE ROAD SURFACE AND 1 WITNESS. THE MONUMENT AGREES WITH THE EXISTING WITNESS. ACCEPTED THE HARRISON MONUMENT WITH THE BROKEN-TOP AS THE CORNER LOCATION. SET 4 NEW TIES AND MEASURED TO THE TIES AND WITNESS.



LOCATION
 (INDICATE CORNER BY "X")

SEAL:



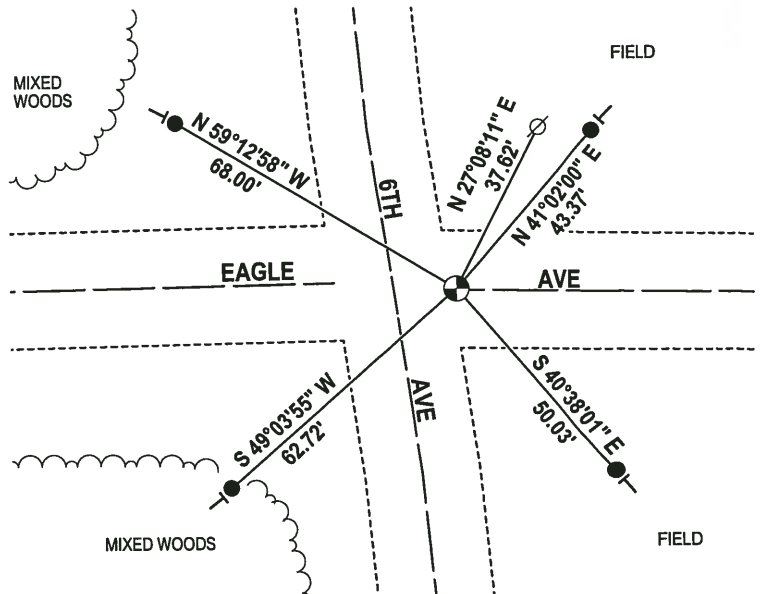
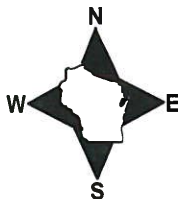
DATA SHOWN HERE ON THIS TIE SHEET IS CORRECT AND COMPLETE TO THE BEST OF MY KNOWLEDGE AND BELIEF.

PROFESSIONAL LAND SURVEYOR

DATE 12-21-17

- TIE SKETCH

NOTE: THE CORNER FALLS 13± EAST OF THE CENTERLINE OF 6TH AVE.



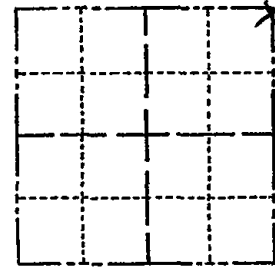
- 3/4" x 18" IRON REBAR SET, 1.50#/FT
- ⊕ HARRISON (BROKEN-TOP) FOUND
- ⊘ WITNESS POWER POLE FOUND
- ┊ VINYL "T" POST

ADAMS COUNTY

Survey Monument Record

TYPE OF MONUMENT: HARRISON
 STATE PLANE COORDINATES: N _____
 E _____
 ELEVATION — M.S.L. DATUM: _____
 THETA ANGLE: _____
 FIELD BOOK: 108 PAGE 126

CORNER NO. 332
 SECTION 6
 TOWN 16
 RANGE 7



LOCATION
(Indicated by 'X')

SEAL:



CERTIFIED CORRECT:

Anthony B. Kiedrowski
 Registered Land Surveyor
 DATE: July 73

BASIS FOR MONUMENT LOCATION

(Use reverse side if necessary)

Show info such as: History of corner, with reference to Vol. and pg. dates, surveyor; exact description of monument replaced; if location computed, by taped or EDM traverse; landowner remarks, etc.

Excavated large area on centerline Eagle Ave. opposite both road to north and road to south. Could find no evidence of corner. Location determined after traversing Sections 5,6, and 7.

CORNER	O.K.	2-22-77	GR-SS
"	"	3-22-82	"
"	"	11-26-86	GR
"	"	12-25-91	GR-K2

TIE SKETCH

12-10-96 SS
 DK 12-28-01
 (Show at least four ties) OK 1-24-07-JG
 OK 01-17-12 MS

