

PUBLIC LAND SURVEY MONUMENT RECORD

TYPE OF MONUMENT: HARRISON
 ADAMS COUNTY COORDINATES, NAD 83 (2007)

N. 192519.569

E. 570615.760

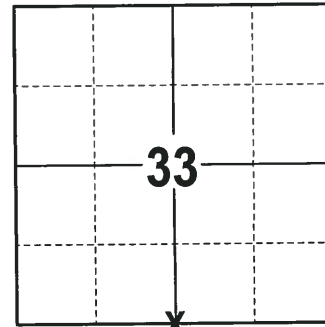
ELEVATION- --- DATUM ---

FIELD WORK DATE: 12/11/2017

BASIS FOR MONUMENT LOCATION

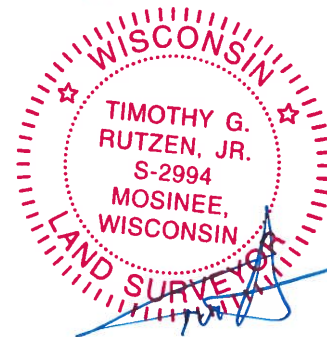
1974 - PLS 1103 RAN E.D.M./TRANSIT TRAVERSE OF SECTIONS 2, 3 AND 4 OF THE TOWN OF NEW CHESTER AND SECTIONS 34 AND 35 OF THE TOWN OF LINCOLN. FOUND NO EVIDENCE OF THE ORIGINAL CORNER OR ANY OF ITS ACCESSORY MONUMENTS. ESTABLISHED THE CORNER BY SINGLE PROPORTIONATE MEASUREMENT ALONG THE TOWNSHIP LINE. SET A HARRISON MONUMENT AT THE CALCULATED LOCATION AND TIED OUT.

2017 - PLS 2994 FOUND A HARRISON MONUMENT 4" ABOVE THE GROUND SURFACE NEXT TO A 4"x4" WOODEN POST WITH A DND SIGN. FOUND NO EVIDENCE OF ANY TIES OR WITNESSES. ACCEPTED THE HARRISON MONUMENT AS THE CORNER LOCATION. SET 4 NEW TIES AND MEASURED TO THE TIES.



LOCATION
 (INDICATE CORNER BY "X")

SEAL:

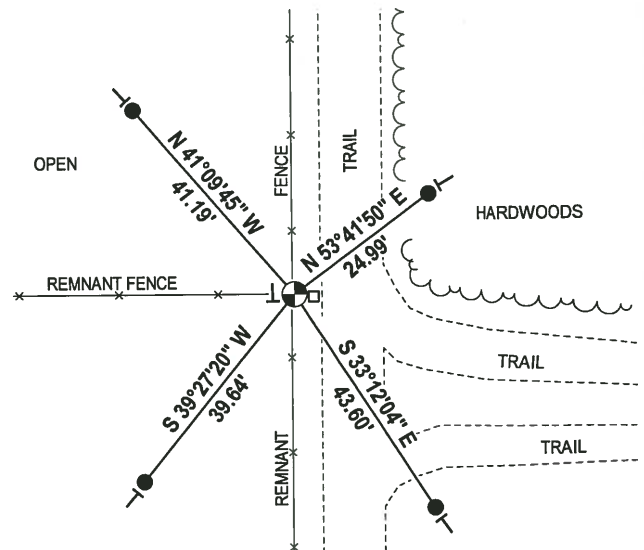
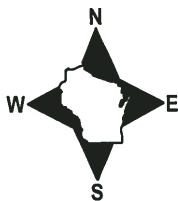


DATA SHOWN HERE ON THIS TIE SHEET IS CORRECT AND COMPLETE TO THE BEST OF MY KNOWLEDGE AND BELIEF.

PROFESSIONAL LAND SURVEYOR

DATE 12-21-17

- TIE SKETCH



- 3/4" x 18" IRON REBAR SET, 1.50#/FT
- ⊙ HARRISON FOUND
- WOODEN POST W/DND SIGN FOUND
- └ VINYL "T" POST

ADAMS COUNTY

Survey Monument Record

TYPE OF MONUMENT: ~~Harrison Monument~~

STATE PLANE COORDINATES: N _____

E _____

ELEVATION — M.S.L. DATUM: _____

THETA ANGLE: _____

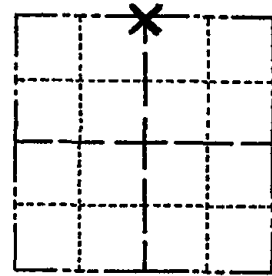
FIELD BOOK: _____ PAGE _____

CORNER NO. 226

SECTION 4

TOWN 16

RANGE 7



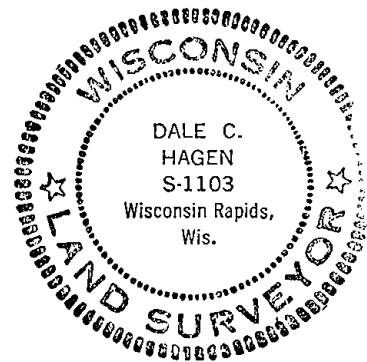
LOCATION (Indicated by 'X')

SEAL:

BASIS FOR MONUMENT LOCATION

(Use reverse side if necessary)

Show info such as: History of corner, with reference to Vol. and pg, dates, surveyor; exact description of monument replaced; if location computed, by taped or EDM traverse; landowner remarks, etc.



Ran EDM/transit traverse of Sections 2, 3 and 4 of the Town of New Chester and Sections 34 and 35 of the Town of Lincoln.

Established corner by single proportionate measure along the township line.

CORNER	O.K.	2-23-77	GRSS
"	"	4-12-82	"
OK		12-15-86	GR
CORNER	OK	12-27-96	JG
"	"	3-4-02	GR
OK		2-20-07	JG

CERTIFIED CORRECT:

Dale C. Hagen
Registered Land Surveyor

DATE: October 2, 1974

TIE SKETCH OK 01-17-12 MS

(Show at least four ties)

NOTE:

Ties in trees to nail in disc.

