

PUBLIC LAND SURVEY MONUMENT RECORD

TYPE OF MONUMENT: HARRISON
 ADAMS COUNTY COORDINATES, NAD 83 (2007)

N. 192523.141

E. 575910.243

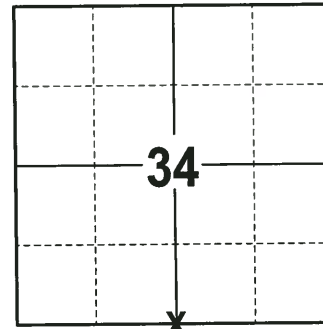
ELEVATION- DATUM

FIELD WORK DATE: 12/11/2017

BASIS FOR MONUMENT LOCATION

1974 - PLS 1103 RAN E.D.M./TRANSIT TRAVERSE OF SECTIONS 2, 3 AND 4 OF THE TOWN OF NEW CHESTER AND SECTIONS 34 AND 35 OF THE TOWN OF LINCOLN. FOUND NO EVIDENCE OF THE ORIGINAL CORNER OR ANY OF ITS ACCESSORY MONUMENTS, ESTABLISHED QUARTER CORNER EQUIDISTANT AND ON A LINE BETWEEN THE NORTHEAST AND THE NORTHWEST SECTION CORNERS. SET A HARRISON MONUMENT AT THE CALCULATED LOCATION AND TIED OUT.

2017 - PLS 2994 FOUND A HARRISON MONUMENT 6" ABOVE THE GROUND SURFACE. FOUND NO EVIDENCE OF ANY TIES OR WITNESSES. ACCEPTED THE HARRISON MONUMENT AS THE CORNER LOCATION. SET 4 NEW TIES AND MEASURED TO THE TIES.



LOCATION
 (INDICATE CORNER BY "X")

SEAL:



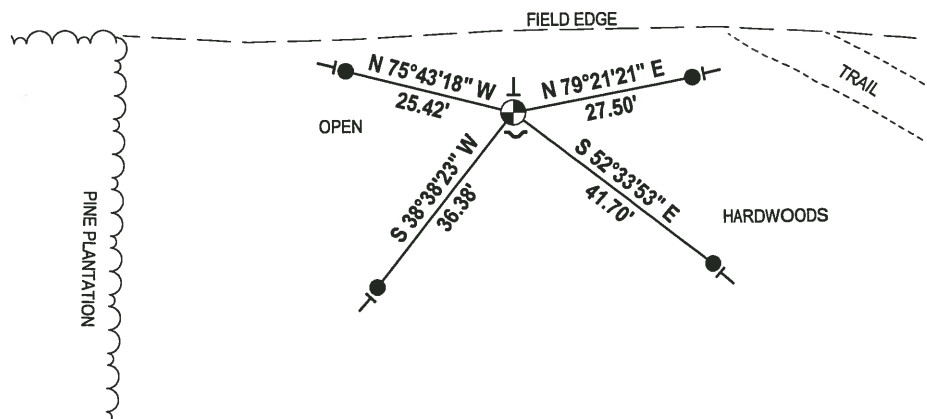
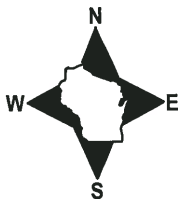
DATA SHOWN HERE ON THIS TIE SHEET IS CORRECT AND COMPLETE TO THE BEST OF MY KNOWLEDGE AND BELIEF.

PROFESSIONAL LAND SURVEYOR

DATE 12-21-17

- TIE SKETCH -

NOTE: THE CORNER FALLS 60± EAST OF THE EDGE OF THE PINE PLANTATION.



- 3/4" x 18" IRON REBAR SET, 1.50#/FT
- ⊙ HARRISON FOUND
- ↘ STEEL FENCE POST
- ← VINYL "T" POST

ADAMS COUNTY

Survey Monument Record

TYPE OF MONUMENT: Standard Harrison

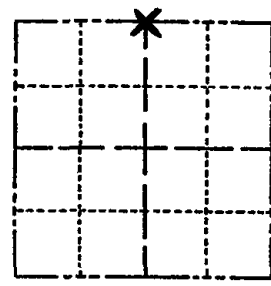
STATE PLANE COORDINATES: N _____
E _____

ELEVATION — M.S.L. DATUM: _____

THETA ANGLE: _____

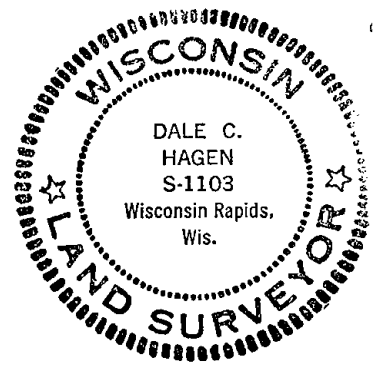
FIELD BOOK: _____ PAGE _____

CORNER NO. 591 (8)
SECTION 3
TOWN 16
RANGE 7



LOCATION
(Indicated by 'X')

SEAL:



BASIS FOR MONUMENT LOCATION

(Use reverse side if necessary)

Show info such as: History of corner, with reference to Vol. and pg, dates, surveyor; exact description of monument replaced; if location computed, by taped or EDM traverse; landowner remarks, etc.

Ran EDM/transit traverse of Sections 2, 3 and 4 of the Town of New Chester and Sections 34 and 35 of the Town of Lincoln.

Could find no evidence of the original corner or any of its accessory monuments, Established Quarter corner equidistant and on line between Northeast and Northwest section corners.

CORNER O.K. 2-24-77 GR-SS
" " 4-12-82 "
" " 12-10-86 GR
2-GONE, 3-NEW 1-15-97 JG-SS
OK 3-6-02-JG
OK 2-20-07-JG

CERTIFIED CORRECT:
Dale C. Hagen
Registered Land Surveyor
DATE: October 2, 1974

TIE SKETCH OK 01-09-12 MS

(Show at least four ties)

NOTE:

Ties in trees to nail in disc.

