

## PUBLIC LAND SURVEY MONUMENT RECORD

TYPE OF MONUMENT: HARRISON  
 ADAMS COUNTY COORDINATES, NAD 83 (2007)

N. 191159.383

E. 565370.096

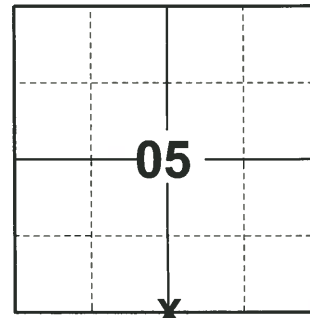
ELEVATION- - - - DATUM - - - -

FIELD WORK DATE: 08/24/2020

### BASIS FOR MONUMENT LOCATION

1975 - PLS 1103 RAN TAPE/TRANSIT TRAVERSE IN THE AREA TO DETERMINE SEARCH AREAS FOR THE CORNERS IN SECTION 8. FOUND 1/2" IRON BAR IN SEARCH AREA, TIED INTO TRAVERSE AND COMPUTED POSITION. ACCEPTED AND MONUMENTED SAME.

2020 - PLS 2675 FOUND HARRISON 6"± ABOVE THE GROUND AND DID NOT RECOVER ANY EXISTING TIES OR WITNESSES. ACCEPTED THE HARRISON AS THE BEST AVAILABLE EVIDENCE OF THE CORNER LOCATION AND SET 4 NEW TIES.



LOCATION

(INDICATE CORNER BY "X")

SEAL:

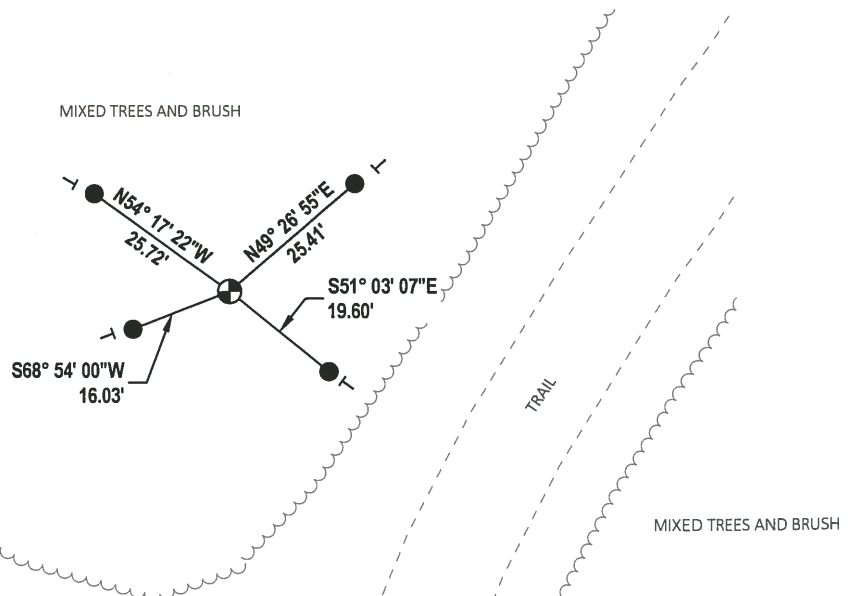
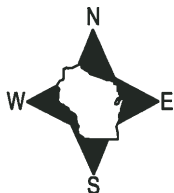


DATA SHOWN HERE ON THIS TIE SHEET IS CORRECT AND COMPLETE TO THE BEST OF MY KNOWLEDGE AND BELIEF.

PROFESSIONAL LAND SURVEYOR

DATE 11/3/2020

### - TIE SKETCH



- SET 3/4" x 18" IRON REBAR, 1.50#/FT
- ⊕ FOUND HARRISON MONUMENT
- ⊖ VINYL "T" POST

# ADAMS COUNTY

## Survey Monument Record

TYPE OF MONUMENT: Harrison Monument (30 inches)

STATE PLANE COORDINATES: N \_\_\_\_\_

E \_\_\_\_\_

ELEVATION — M.S.L. DATUM: \_\_\_\_\_

THETA ANGLE: \_\_\_\_\_

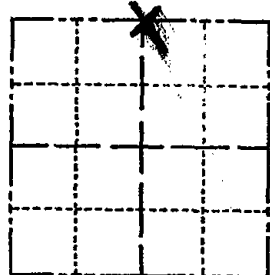
FIELD BOOK: \_\_\_\_\_ PAGE \_\_\_\_\_

CORNER NO. 630

SECTION 8

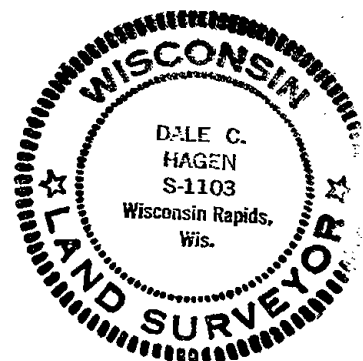
TOWN 16

RANGE 7



LOCATION  
(Indicated by 'X')

SEAL:



### BASIS FOR MONUMENT LOCATION

(Use reverse side if necessary)

Show info such as: History of corner, with reference to Vol. and pg, dates, surveyor; exact description of monument replaced; if location computed, by taped or EDM traverse; landowner remarks, etc.

Ran tape/transit traverse in the area to determine search areas for the corners in section 8.

Found 1/2" iron bar in search area, tied into traverse and computed position.

Accepted and monumented same.

CORNER	O.K.	2-22-77	GR-SS
"	"	4-12-82	"
"	"	11-26-86	GR
2 NEW TIES		12-10-96	SS
OK		3-4-02	GR
OK		1-24-07	JG
		2 NEW TIES	01-17-12 MS

CERTIFIED CORRECT:

*Dale C. Hagen*  
Registered Land Surveyor

DATE: 3-28-75

### TIE SKETCH

NOTE: Ties to nail and disc in trees.

(Show at least four ties)

