

## PUBLIC LAND SURVEY MONUMENT RECORD

TYPE OF MONUMENT: HARRISON (BROKEN-TOP)  
 ADAMS COUNTY COORDINATES, NAD 83 (2007)

N. 191179.761

E. 570661.519

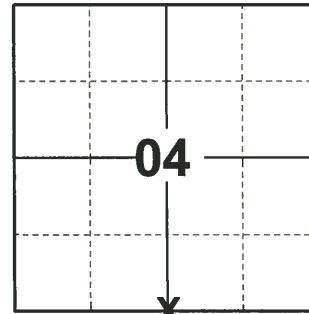
ELEVATION- - - - - DATUM - - - - -

FIELD WORK DATE: 08/27/2020

### BASIS FOR MONUMENT LOCATION

1973 - PLS 878 SET BY RETRACEMENT OF SAM MULLEN SURVEY IN SECTION 5.

2020 - PLS 2675 FOUND HARRISON (BROKEN-TOP) 8"± BELOW THE ROAD SURFACE AND 2 TIES. THE MONUMENT AGREES WITH BOTH TIES. ACCEPTED THE HARRISON (BROKEN-TOP) AS THE CORNER LOCATION. SET 3 NEW TIES, MEASURED TO A FOUND PROPERTY IRON AND THE EXITING TIES.



**LOCATION**  
 (INDICATE CORNER BY "X")

SEAL:



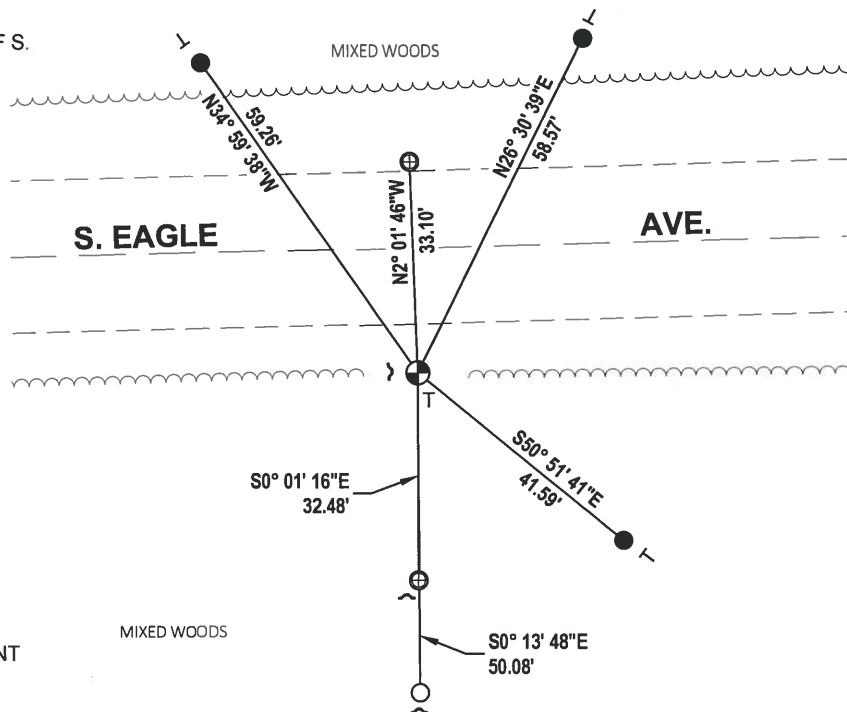
DATA SHOWN HERE ON THIS TIE SHEET IS CORRECT AND COMPLETE TO THE BEST OF MY KNOWLEDGE AND BELIEF.

PROFESSIONAL LAND SURVEYOR

DATE 11/3/2020

### - TIE SKETCH

NOTE: THE CORNER LANDS 20'± SOUTH OF S. EAGLE AVE. CENTERLINE.



- SET 3/4" x 18" IRON REBAR, 1.50#/FT
- FOUND 3/4" IRON ROD
- ⊕ FOUND 1.00" O.D. IRON PIPE
- ⊕ FOUND HARRISON (BROKEN-TOP) MONUMENT
- ↙ STEEL FENCE POST
- ↔ VINYL "T" POST

ADAMS COUNTY

CORNER NO. 222

Survey Monument Record

SECTION 4

TYPE OF MONUMENT: Harrison standard

TOWN 16

STATE PLANE COORDINATES: N

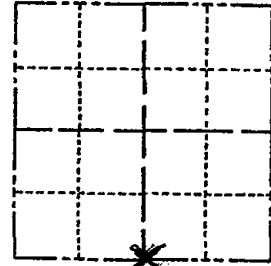
RANGE 7

E

ELEVATION - M.S.L. DATUM:

THETA ANGLE:

FIELD BOOK: 107 PAGE 37



LOCATION (Indicated by 'X')

SEAL:



BASIS FOR MONUMENT LOCATION

(Use reverse side if necessary)

Show info such as: History of corner, with reference to Vol. and pg, dates, surveyor; exact description of monument replaced; if location computed, by taped or EDM traverse; landowner remarks, etc.

Set by retracement of Sam Mullen Survey in Sec. 5.

CORNER	O.K.	2-24-77	GR-SS
"	"	4-12-82	"
"	"	11-26-86	GL
"	"	12-30-91	GR-JG
"	"	12-27-96	JG
1-NEW TIE		3-4-02	GR

CERTIFIED CORRECT:

*Anthony B. Kiedrowski*  
Registered Land Surveyor

DATE: 2-22-73

TIE SKETCH OK, 1-24-07-JG, OK 01-17-12 MS  
(Show at least four ties)

