

08
SECTION

16
TOWN

07
RANGE

ADAMS COUNTY

COUNTY CORNER NO: 36

ROMPORTOL ID: 41607082000

PUBLIC LAND SURVEY MONUMENT RECORD

TYPE OF MONUMENT: HARRISON

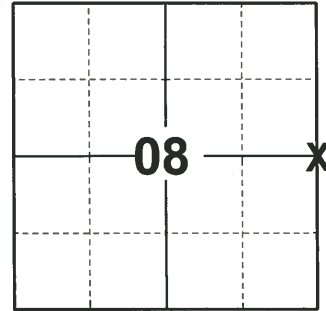
ADAMS COUNTY COORDINATES, NAD 83 (2007)

N. 188514.530

E. 568843.019

ELEVATION- DATUM

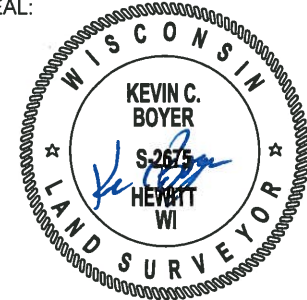
FIELD WORK DATE: 09/16/2020



LOCATION

(INDICATE CORNER BY "X")

SEAL:



DATA SHOWN HERE ON THIS TIE SHEET IS CORRECT AND COMPLETE TO THE BEST OF MY KNOWLEDGE AND BELIEF.

PROFESSIONAL LAND SURVEYOR

DATE 11/3/2020

BASIS FOR MONUMENT LOCATION

1971 - PLS 981 FOUND NAIL AND PIPE, SET BOTTOM 20" OF HARRISON MONUMENT ON ROCK.

1977 - PLS 1108 THIS IS A RE-TIE OF CORNER SET BY SAM T. MULLEN.

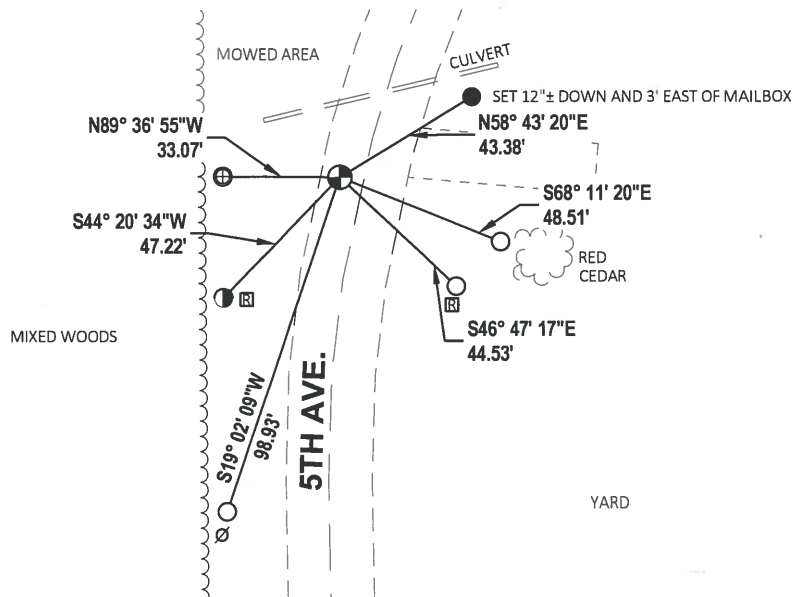
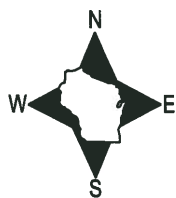
2008 - PLS 2559 FOUND HARRISON MONUMENT 1.2' BELOW GRAVEL SURFACE AND ACCEPTED IT AS THE TRUE CORNER LOCATION. THEN SET ACCESSORIES.

2008 - PLS 2663 PRIOR TO ROAD CONSTRUCTION RECOVERED BOTTOM OF HARRISON MONUMENT CALLED FOR AND RECORDED ITS LOCATION. AFTER ROAD CONSTRUCTION WAS COMPLETED FOUND BOTTOM OF HARRISON MONUMENT INTACT ±1' BELOW THE ROAD SURFACE AND VERIFIED LOCATION. SET 3 NEW WITNESS MONUMENTS.

2020 - PLS 2675 FOUND MAG NAIL IN THE ROAD SURFACE, REMOVED AND FOUND HARRISON 24" BELOW THE ROAD SURFACE AND 4 TIES. THE MONUMENT AGREES WITH ALL 4 TIES. ACCEPTED THE HARRISON AS THE CORNER LOCATION. SET 1 NEW TIE AND MEASURED TO A FOUND RIGHT-OF-WAY IRON AND THE EXISTING TIES.

TIE SKETCH

NOTE: THE CORNER LANDS 7± WEST OF 5TH AVE. CENTERLINE.



- SET 3/4" x 18" IRON REBAR, 1.50#/FT
- FOUND 3/4" IRON ROD
- ⊙ FOUND 5/8" IRON ROD
- ⊕ FOUND 1.00" O.D. IRON PIPE
- ⊗ FOUND HARRISON MONUMENT
- ⊘ POWER POLE
- ⊠ RIGHT-OF-WAY GUARD POST

U. S. Public Land Survey Monument Record

ADAMS COUNTY

TYPE OF MONUMENT: Harrison Monument

STATE PLANE COORDINATES: N _____
 E _____

ELEVATION -- M.S.L. DATUM: _____

THETA ANGLE: _____

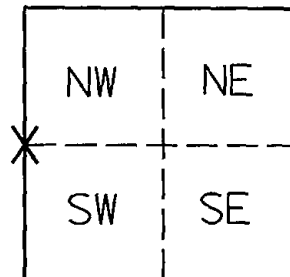
FIELD BOOK: _____

CORNER NO. 36

SECTION 9

TOWN 16 N

RANGE 07 E



LOCATION
(Indicated by "X")

BASIS FOR MONUMENT LOCATION

(Use reverse side if necessary)

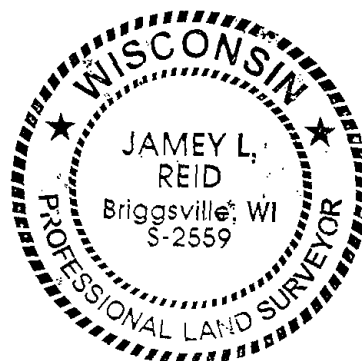
Show information such as: History of corner, with reference to Vol. and pg. dates, surveyor; exact description of monument established by you to perpetuate the location of this point, landowner remarks, etc.

10-27-08 - I found a Harrison Monument 1.2' below gravel surface and accepted it as the true corner location. I then set accessories as shown.

SEE TIE SHEET
 19-SEPT-'08
 D. KRANOWSKI
 AND
 5-31-77
 DALE HAGEN
 AND
 14-July '71
 SAM MULLEN

SURVEYOR'S CERTIFICATE:

This is to certify that the corner location on this record was determined by or under my direction and control and that this US Land Survey Monument Record is correct to the best of my knowledge and belief.



Jamey L. Reid 11-18-08
 Jamey L. Reid RLS-2559

TIE SKETCH

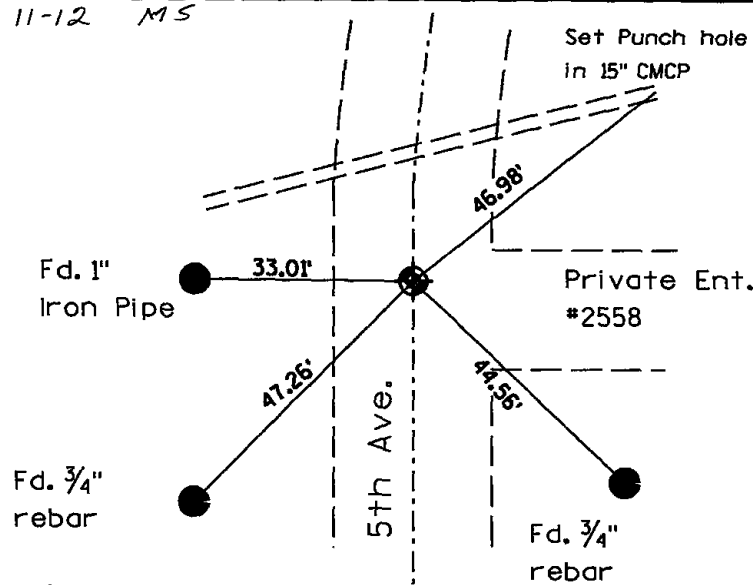
OK 01-11-12 MS

(Show at least four ties)

Not to Scale



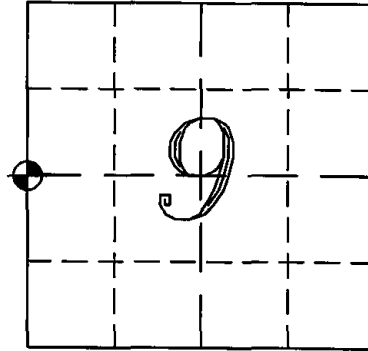
⊙ - Fd. Harrison Monument



Prepared by Ayres Associates
 1802 Pankratz Street
 Madison, WI 53704
 phone: (608)-443-1200

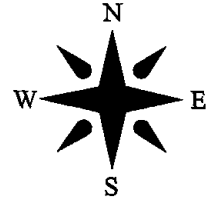
ADAMS COUNTY
SURVEY MONUMENT RECORD

GOVERNMENT CORNER: W1/4 SEC 9 T16N R7E
 TYPE OF MONUMENT: HARRISON
 STATE PLANE COORDINATES: N _____
 E _____
 ELEVATION: _____
 FIELD BOOK: _____ PAGE _____



CORNER NO. ~~17~~
36

SECTION 9
TOWN 16 NORTH
RANGE 7 EAST
NEW CHESTER
CITY, VILLAGE, TOWN



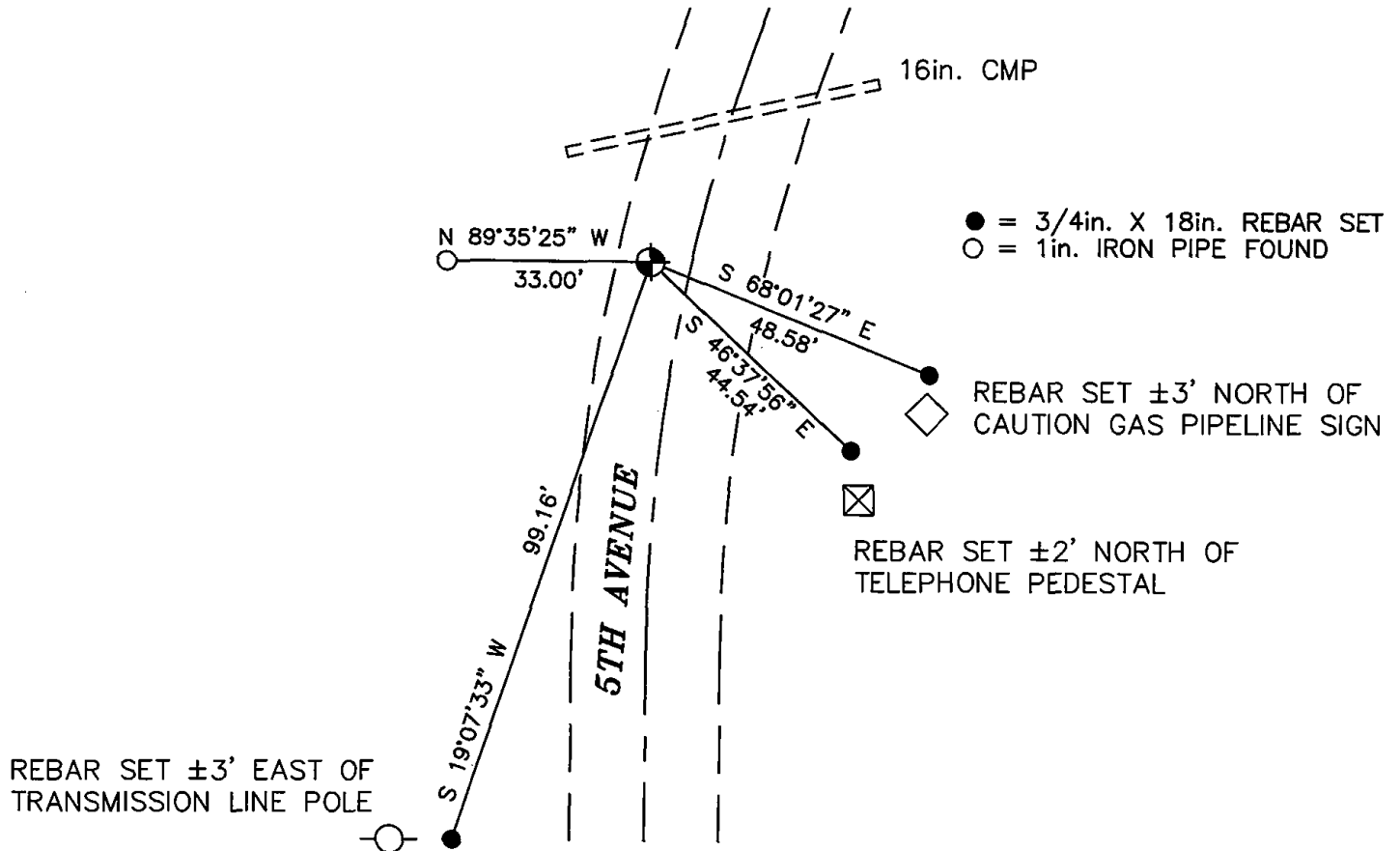
BASIS FOR CORNER LOCATION:

PRIOR TO ROAD CONSTRUCTION RECOVERED BOTTOM OF HARRISON MONUMENT CALLED FOR AND RECORDED ITS LOCATION. AFTER ROAD CONSTRUCTION WAS COMPLETED FOUND BOTTOM OF HARRISON MONUMENT INTACT ±1' BELOW THE ROAD SURFACE AND VERIFIED LOCATION THEN SET THREE NEW WITNESS MONUMENTS.



REGISTERED LAND SURVEYOR
DATE: 19 SEPTEMBER 2008

TIE SKETCH



ADAMS COUNTY

Survey Monument Record

TYPE OF MONUMENT: Box 20" of Harrison

STATE PLANE COORDINATES: N _____

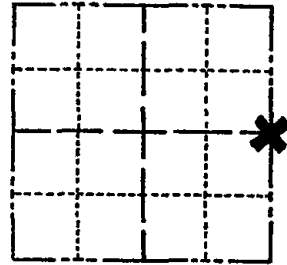
E _____

ELEVATION — M.S.L. DATUM: _____

THETA ANGLE: _____

FIELD BOOK: 38 PAGE 37

CORNER NO. 36
SECTION 8
TOWN 16
RANGE 7



LOCATION
(Indicated by 'X')

SEAL:

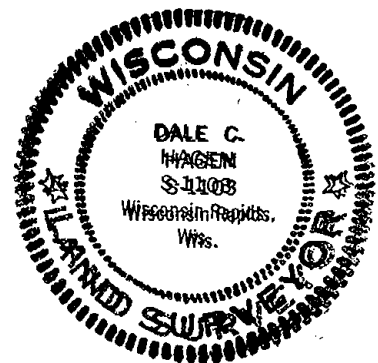
BASIS FOR MONUMENT LOCATION

(Use reverse side if necessary)

Show info such as: History of corner, with reference to Vol. and pg, dates, surveyor; exact description of monument replaced; if location computed, by taped or EDM traverse; landowner remarks, etc.

This is a re-tie of corner set by Sam T. Mullen.

Re-tied on 4-4-77.



COR. OK 3-22-82 GR-55

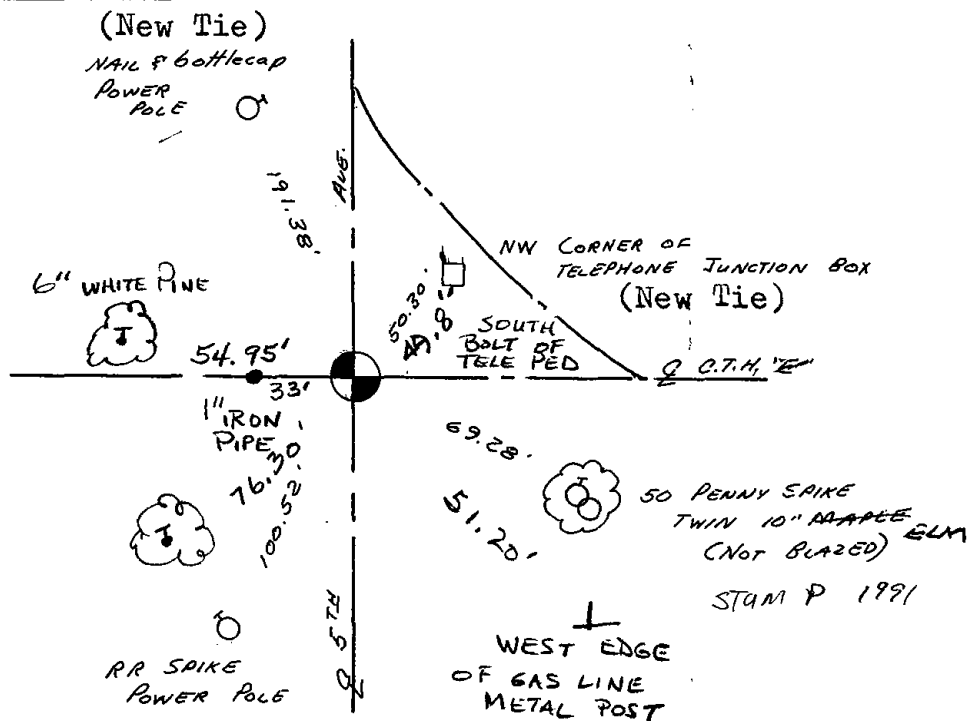
CERTIFIED CORRECT:

Dale C Hazen
Registered Land Surveyor

DATE: 5-31-77

TIE SKETCH

(Show at least four ties)

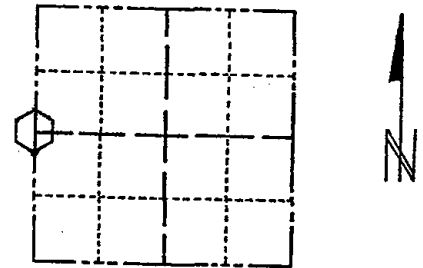


ADAMS COUNTY

CORNER NO. 17
 SECTION 9
 TOWN 16
 RANGE 7

Survey Monument Record

TYPE OF MONUMENT: 30" HARRISON
 STATE PLANE COORDINATES: N _____
 E _____
 ELEVATION — M.S.L. DATUM: _____
 THETA ANGLE: _____
 FIELD BOOK: 104 PAGE 49



LOCATION
(Indicated by 'X')

SEAL:

BASIS FOR MONUMENT LOCATION

(Use reverse side if necessary)

Show info such as: History of corner, with reference to Vol. and pg, dates, surveyor; exact description of monument replaced; if location computed, by taped or EDM traverse; landowner remarks, etc.

Found nail and pipe and set bottom 20" of Harrison monument on rock

July 14, 1971

Sam T. Mullen R.L.S. S-981

CORNER OK 4-82 GR.
 OK 11-26-86 GR
 OK 11-25-91 GR-KZ
 1-CONE, 3-NEW TIES 1/6/97 JG-SS
 OK 3-4-02-JG
 OK 2-20-07-JG

CERTIFIED CORRECT:

Registered Land Surveyor

DATE: _____

TIE SKETCH

(Show at least four ties)

