

PUBLIC LAND SURVEY MONUMENT RECORD

TYPE OF MONUMENT: HARRISON
 ADAMS COUNTY COORDINATES, NAD 83 (2007)

N. 188572.353

E. 578613.039

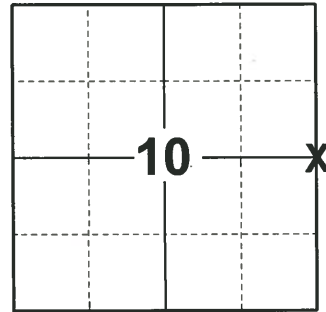
ELEVATION- DATUM

FIELD WORK DATE: 09/01/2020

BASIS FOR MONUMENT LOCATION

1976 - PLS 1103 RAN EDM/TRANSIT TRAVERSE AROUND SECTION 10 AND TO ADJACENT GOVERNMENT CORNERS. EXCAVATION WITH BACKHOE BY A.B. KIEDROWSKI, ADAMS COUNTY SURVEYOR, YIELDED NO EVIDENCE OF THE ORIGINAL CORNER OR ANY REMONUMENTATION. SET CORNER AT RECORD DISTANCE AS MARKED ON THE EXISTING CONCRETE MONUMENT IN THE SOUTHEAST QUADRANT OF THE INTERSECTION, AND ON LINE WITH THE WEST QUARTER CORNER OF THIS SECTION AND THE CENTER OF THIS SECTION AS RECONSTRUCTED FROM SURVEYS ADJACENT TO THE CENTER OF SECTION.

2020 - PLS 2675 FOUND HARRISON 6"± BELOW THE ROAD SURFACE AND 2 WITNESSES. THE MONUMENT AGREES WITH BOTH WITNESSES. ACCEPTED THE HARRISON AS THE CORNER LOCATION. SET 3 NEW TIES AND MEASURED TO A FOUND USGS MONUMENT AND THE EXISTING WITNESSES.



LOCATION
 (INDICATE CORNER BY "X")

SEAL:



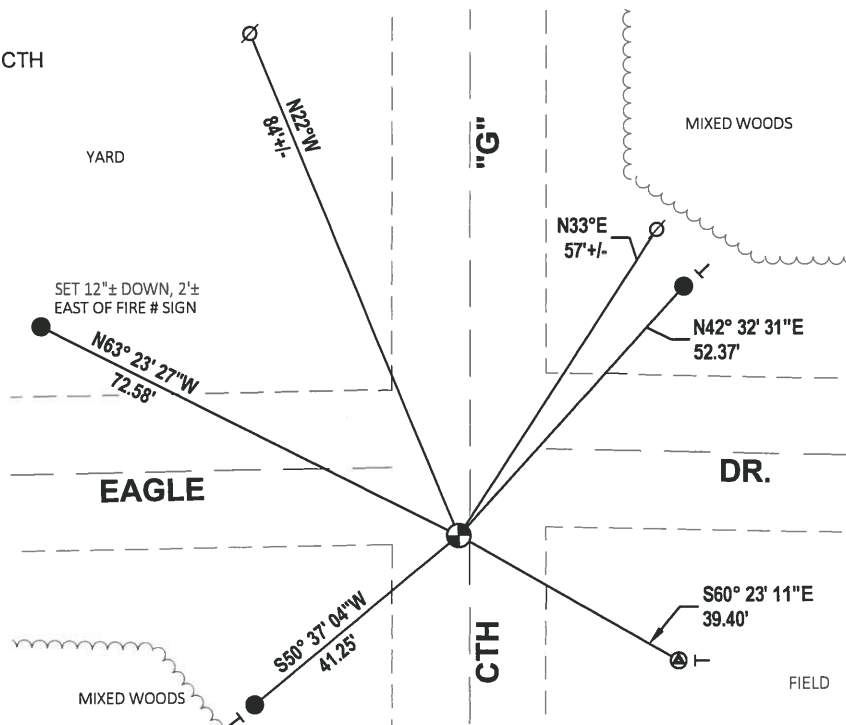
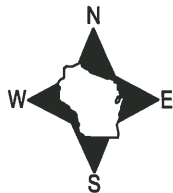
DATA SHOWN HERE ON THIS TIE SHEET IS CORRECT AND COMPLETE TO THE BEST OF MY KNOWLEDGE AND BELIEF.

PROFESSIONAL LAND SURVEYOR

DATE 11/3/2020

TIE SKETCH

NOTE: THE CORNER LANDS 2.7'± WEST OF CTH "G" CENTERLINE.



- SET 3/4" x 18" IRON REBAR, 1.50#/FT
- ⊕ FOUND USGS MONUMENT
- ⊕ FOUND HARRISON MONUMENT
- ⊙ WITNESS POWER POLE
- └ VINYL "T" POST

ADAMS COUNTY

Survey Monument Record

TYPE OF MONUMENT: Standard Harrison

STATE PLANE COORDINATES: N _____
E _____

ELEVATION — M.S.L. DATUM: _____

THETA ANGLE: _____

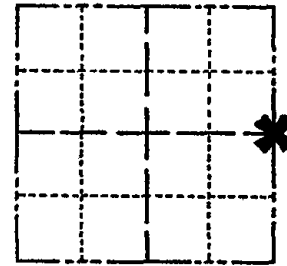
FIELD BOOK: _____ PAGE _____

CORNER NO. 900

SECTION 10

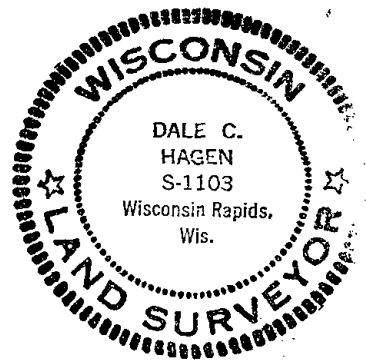
TOWN 16

RANGE 7



LOCATION
(Indicated by 'X')

SEAL:



CERTIFIED CORRECT:

Dale C. Hagen

Registered Land Surveyor

DATE: January 23, 1976

Ran EDM/transit traverse around Section 10 and to adjacent government corners.

Excavation with backhoe by A.B.Kiedrowski, Adams County Surveyor, yielded no evidence of the original corner or any remonumentation.

Set corner at record distance as marked on the existing concrete monument in the southeast quadrant on the intersection, and on line with the West Quarter corner of this section and the center of this section as reconstructed from the surveys adjacent to the center of section.

CORNER	O.K.	3-28-77	GR-SS
"	"	4-20-82	GR-SS
"	"	11-26-86	GR

TIE SKETCH COR OK 12-30-91 GR-JG OK 01-11-12 MS
" " 12-10-96 SS

(Show at least four ties) OK, 1-07-02 ML Power Pole
OK, 2-20-07 JG O Pole

NOTE:

Ties in poles to nail in disc.

