

PUBLIC LAND SURVEY MONUMENT RECORD

TYPE OF MONUMENT: HARRISON
 ADAMS COUNTY COORDINATES, NAD 83 (2007)

N. 188597.870

E. 583892.772

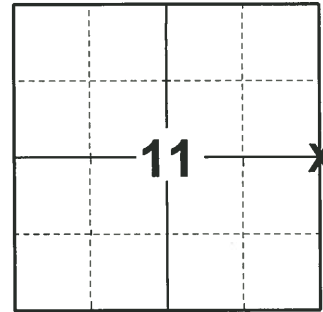
ELEVATION- DATUM

FIELD WORK DATE: 08/31/2020

BASIS FOR MONUMENT LOCATION

1976 - PLS 1103 EXCAVATED WITH BACKHOE AT LOCATION INDICATED BY TIE TO ORIGINAL BEARING TREE, THE STUMP HOLE OF WHICH WAS POINTED OUT BY LOCAL LANDOWNER, DARWIN PODOLL. EXCAVATION YIELDED BOTTOM 6" OF POINTED 2" DIAMETER DRIVEN STAKE, WHICH MATCHED TIE TO STUMP HOLE OF BEARING TREE TO NORTHEAST. REPLACED POST WITH HARRISON MONUMENT.

2020 - PLS 2675 FOUND HARRISON FLUSH WITH THE ROAD SURFACE AND DID NOT RECOVER ANY EXISTING TIES OR WITNESSES. ACCEPTED THE HARRISON AS THE BEST AVAILABLE EVIDENCE OF THE CORNER LOCATION. SET 4 NEW TIES.



LOCATION
 (INDICATE CORNER BY "X")

SEAL:



MIXED WOODS

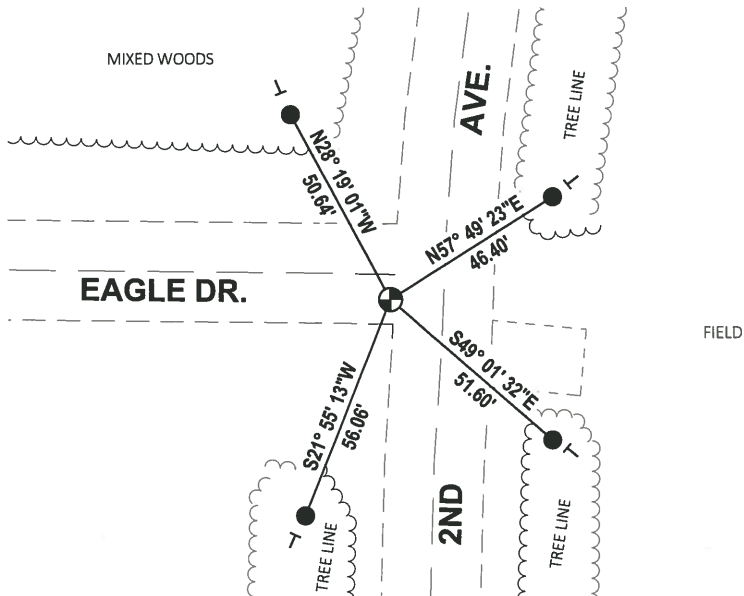
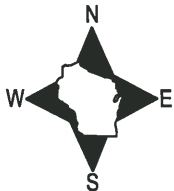
DATA SHOWN HERE ON THIS TIE SHEET IS CORRECT AND COMPLETE TO THE BEST OF MY KNOWLEDGE AND BELIEF.

PROFESSIONAL LAND SURVEYOR

DATE 11/3/2020

- TIE SKETCH -

NOTE: THE CORNER LANDS 6± SOUTH OF EAGLE DR. CENTERLINE AND 13± WEST OF 2ND AVE. CENTERLINE.



- SET 3/4" x 18" IRON REBAR, 1.50#/FT
- ⊕ FOUND HARRISON MONUMENT
- VINYL "T" POST

ADAMS COUNTY

Survey Monument Record

TYPE OF MONUMENT: Harrison Monument

STATE PLANE COORDINATES: N _____

E _____

ELEVATION — M.S.L. DATUM: _____

THETA ANGLE: _____

FIELD BOOK: 37 PAGE 59

BASIS FOR MONUMENT LOCATION

(Use reverse side if necessary)

Show info such as: History of corner, with reference to Vol. and pg. dates, surveyor; exact description of monument replaced; if location computed, by taped or EDM traverse; landowner remarks, etc.

Excavated with backhoe at location indicated by tie to original bearing tree, the stump hole of which was pointed out by local landowner, Darwin Podoll.

Excavation yielded bottom 6" of pointed 2" diameter driven stake, which matched tie to stump hole of bearing tree to Northeast.

Replaced post with Harrison Monument of 7-8-76.

COR. OK 4-12-82 GR-SS
" " 12-12-86 GR

CORNER O.K. 2-24-77 GR-SS

OK 12-23-91 K2-SS
" 12-10-96 SS

OK - 1-02-02 M.L.

OK, 2-20-07-JG

OK 01-11-12 MS

CERTIFIED CORRECT:

Dale C. Hagen
Registered Land Surveyor

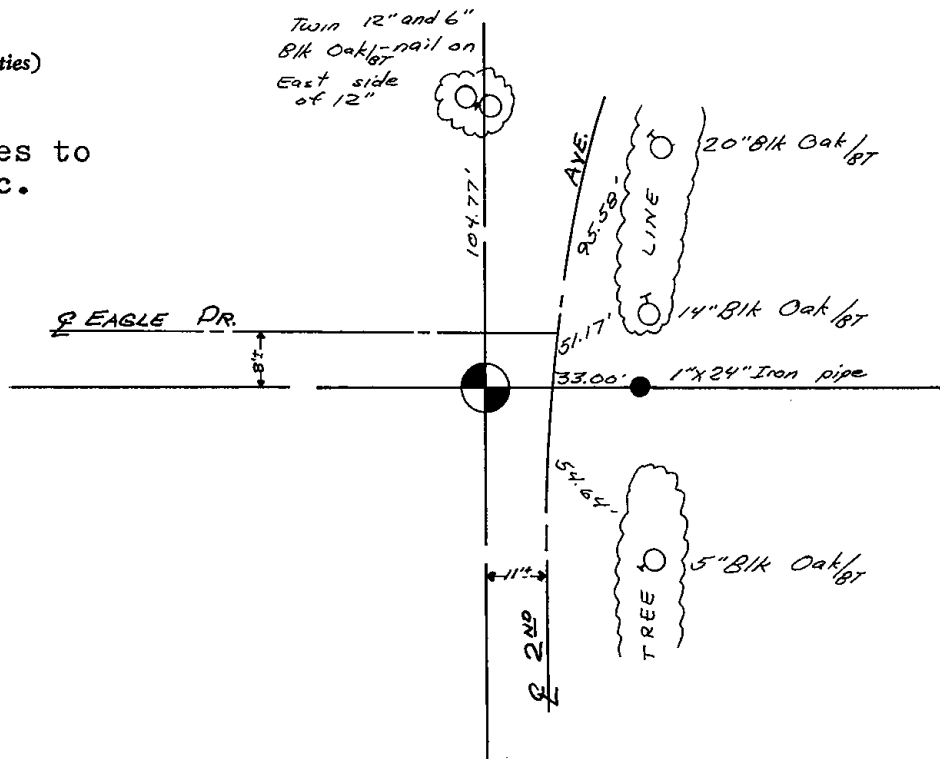
DATE: 12-1-76

TIE SKETCH

(Show at least four ties)

NOTE

Ties in trees to nail in disc.

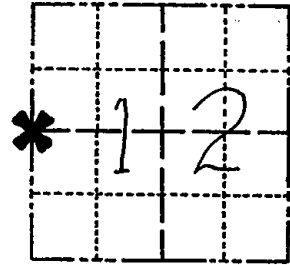


CORNER NO. 39

SECTION 12

TOWN 16

RANGE 7



LOCATION (Indicated by 'X')

SEAL:

