

## PUBLIC LAND SURVEY MONUMENT RECORD

TYPE OF MONUMENT: HARRISON  
 ADAMS COUNTY COORDINATES, NAD 83 (2007)

N. 185847.511

E. 560088.984

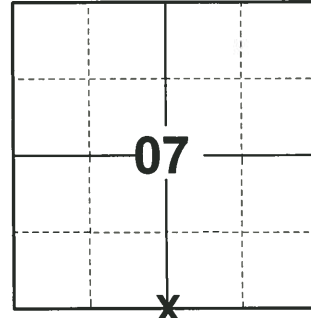
ELEVATION- - - - - DATUM - - - - -

FIELD WORK DATE: 09/17/2020

### BASIS FOR MONUMENT LOCATION

1976 - PLS 878 EXCAVATED LARGE AREA WITH BACKHOE. COULD FIND NO EVIDENCE OF MONUMENTATION. POINT SET ON LINE IN PROPORTION TO ORIGINAL NOTES. NO RESURVEYS ON RECORD.

2020 - PLS 2675 FOUND HARRISON 12"± BELOW THE DRIVEWAY SURFACE AND DID NOT RECOVER ANY EXISTING TIES OR WITNESSES. ACCEPTED THE HARRISON AS THE BEST AVAILABLE EVIDENCE OF THE CORNER LOCATION AND SET 4 NEW TIES.



**LOCATION**  
 (INDICATE CORNER BY "X")

SEAL:



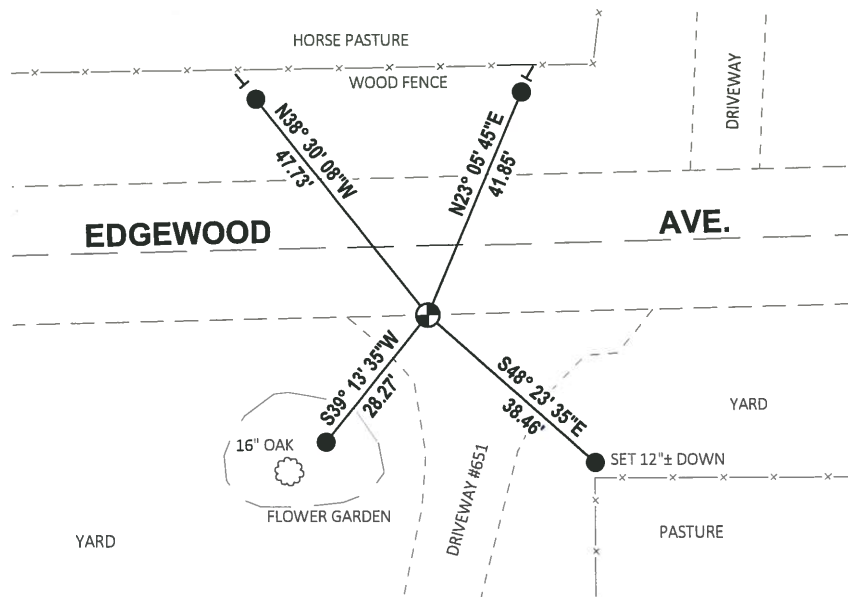
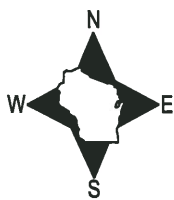
DATA SHOWN HERE ON THIS TIE SHEET IS CORRECT AND COMPLETE TO THE BEST OF MY KNOWLEDGE AND BELIEF.

PROFESSIONAL LAND SURVEYOR

DATE 11/3/2020

### TIE SKETCH

NOTE: THE CORNER LANDS 12"± SOUTH OF EDGEWOOD AVE. CENTERLINE.



- SET 3/4" x 18" IRON REBAR, 1.50#/FT
- ⊕ FOUND HARRISON MONUMENT
- VINYL "T" POST

**ADAMS COUNTY**

**Survey Monument Record**

TYPE OF MONUMENT: Harrison standard

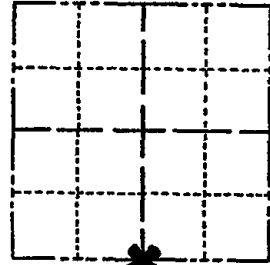
STATE PLANE COORDINATES: N \_\_\_\_\_  
E \_\_\_\_\_

ELEVATION — M.S.L. DATUM: \_\_\_\_\_

THETA ANGLE: \_\_\_\_\_

FIELD BOOK: \_\_\_\_\_ PAGE \_\_\_\_\_

CORNER NO. 868 <sup>(42)</sup>  
SECTION 7  
TOWN 16  
RANGE 7



LOCATION  
(Indicated by 'X')

**BASIS FOR MONUMENT LOCATION**

(Use reverse side if necessary)

Show info such as: History of corner, with reference to Vol. and pg, dates, surveyor; exact description of monument replaced; if location computed, by taped or EDM traverse; landowner remarks, etc.

Excavated large area with backhoe.  
Could find no evidence of monumentation.  
Point set on line in proportion to original notes. No resurveys on record.

SEAL:



CORNER	O.K.	3-8-77	GR-55
"	"	3-22-82	"
"	"	11-26-86	GR
"	"	12-26-91	KZ-GR
"	"	12-27-96	JG
"	"	12-14-01	MH

CERTIFIED CORRECT:

*Anthony B. Kiedrowski*

Registered Land Surveyor

DATE: 1/23/76

**TIE SKETCH**

(Show at least four ties)

