

PUBLIC LAND SURVEY MONUMENT RECORD

TYPE OF MONUMENT: HARRISON
 ADAMS COUNTY COORDINATES, NAD 83 (2007)

N. 185851.074

E. 568041.830

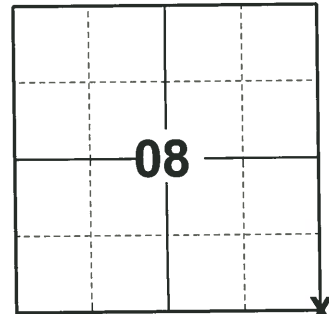
ELEVATION- DATUM

FIELD WORK DATE: 08/24/2020

BASIS FOR MONUMENT LOCATION

1975 - PLS 878 EXCAVATED WITH BACKHOE, FOUND 36" LONG POINTED BLUE GRANITE BOULDER, UPRIGHT AND OBVIOUSLY DUG IN. NO RECORD OF RESURVEYS. ACCEPTED AS CORNER AFTER ANALYZING EDM TRAVERSE OF THE SECTION. LOWERED STONE AND SET HARRISON ON TOP.

2020 - PLS 2675 FOUND MAG NAIL IN THE ROAD SURFACE, REMOVED AND FOUND HARRISON 20"± BELOW THE ROAD SURFACE AND DID NOT RECOVER ANY EXISTING TIES OR WITNESSES. ACCEPTED THE HARRISON AS THE BEST AVAILABLE EVIDENCE OF THE CORNER LOCATION AND SET 4 NEW TIES.



LOCATION

(INDICATE CORNER BY "X")

SEAL:



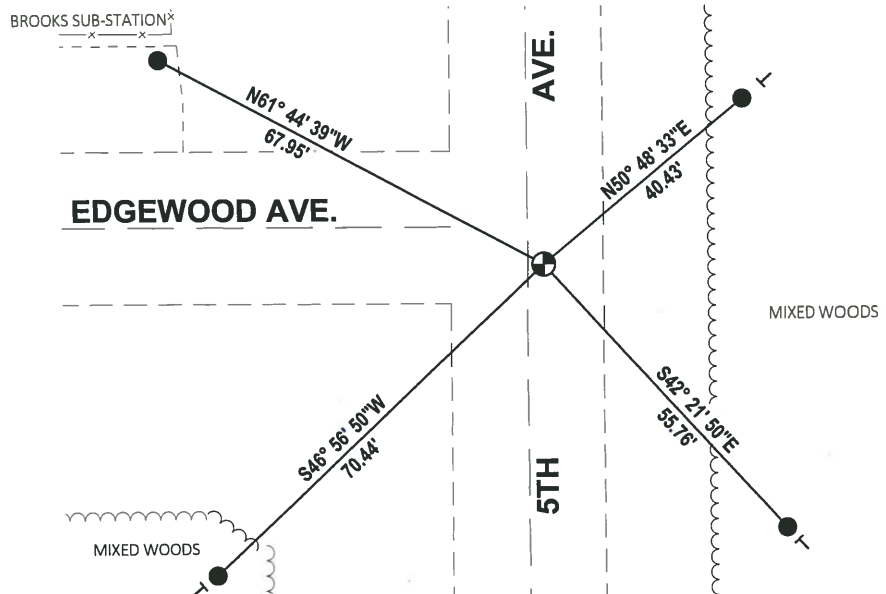
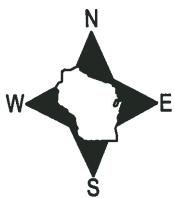
DATA SHOWN HERE ON THIS TIE SHEET IS CORRECT AND COMPLETE TO THE BEST OF MY KNOWLEDGE AND BELIEF.

PROFESSIONAL LAND SURVEYOR

DATE 11/3/2020

- TIE SKETCH

NOTE: THE CORNER LANDS 2.5'± EAST OF 5TH AVE. CENTERLINE.



- SET 3/4" x 18" IRON REBAR, 1.50#/FT
- ⊕ FOUND HARRISON MONUMENT
- ┊ VINYL "T" POST

ADAMS COUNTY

Survey Monument Record

TYPE OF MONUMENT: Harrison standard

STATE PLANE COORDINATES: N _____
E _____

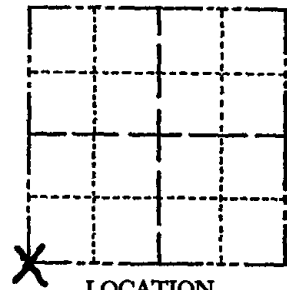
ELEVATION — M.S.L. DATUM: _____

THETA ANGLE: _____

FIELD BOOK: _____ PAGE _____

CORNER NO. 891
SECTION 9
TOWN 16
RANGE 7

45



BASIS FOR MONUMENT LOCATION

(Use reverse side if necessary)

Show info such as: History of corner, with reference to Vol. and pg, dates, surveyor; exact description of monument replaced; if location computed, by taped or EDM traverse; landowner remarks, etc.

Excavated with backhoe. Found 36" long pointed blue granite boulder, upright and obviously dug in. No record of resurveyers. Accepted as corner after analyzing EDM traverse of the section. Lowered stone and set Harrison on top.

LOCATION (Indicated by 'X')

SEAL:



CORNER	O.K.	3-28-77	GR-55
"	"	3-22-82	"
"	"	11-26-86	CR
"	"	11-25-91	GR
"	"	12-27-96	JG

CERTIFIED CORRECT:

Anthony B. Kiedrowski
Registered Land Surveyor
5/30/75

DATE: _____

TIE SKETCH 11 12-14-01 ML O 50' Power Pole

(Show at least four ties) OK 2-20-07 JG
OK 01-11-12 MS

