

PUBLIC LAND SURVEY MONUMENT RECORD

TYPE OF MONUMENT: HARRISON
 ADAMS COUNTY COORDINATES, NAD 83 (2007)

N. 185887.848

E. 570694.685

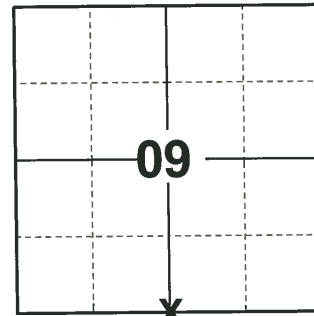
ELEVATION- DATUM

FIELD WORK DATE: 08/24/2020

BASIS FOR MONUMENT LOCATION

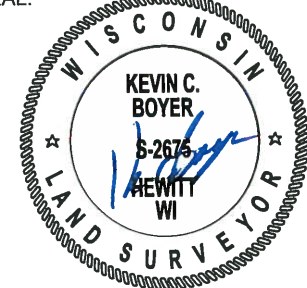
1975 - PLS 1103 RAN EDM/TRANSIT TRAVERSE AROUND SECTIONS 9 AND 16, AND TO ADJACENT SECTION CORNERS TO DETERMINE SEARCH AREAS. COULD FIND NO EVIDENCE OF THE ORIGINAL CORNER OR ANY REMONUMENTATION. SET CORNER ON LINE BETWEEN ADJACENT SECTION CORNERS AND ON EXTENSION OF LINE FROM NORTH QUARTER CORNER AND CENTER OF SECTION 9.

2020 - PLS 2675 FOUND HARRISON 4"± ABOVE THE GROUND AND 1 WITNESS TREE. THE MONUMENT AGREES WITH THE WITNESS TREE. ACCEPTED THE HARRISON AS THE CORNER LOCATION. SET 4 NEW TIES AND MEASURED TO THE EXISTING WITNESS TREE.



LOCATION
 (INDICATE CORNER BY "X")

SEAL:

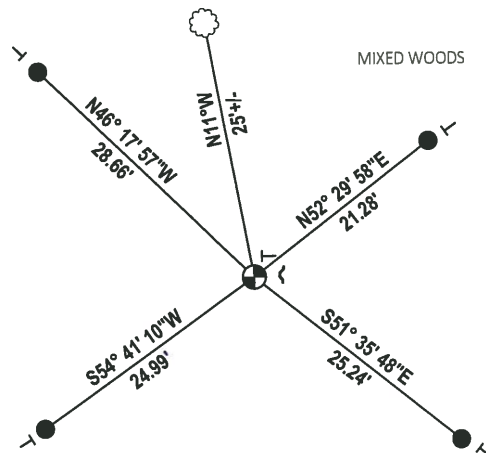
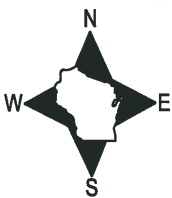


DATA SHOWN HERE ON THIS TIE SHEET IS CORRECT AND COMPLETE TO THE BEST OF MY KNOWLEDGE AND BELIEF.

PROFESSIONAL LAND SURVEYOR

DATE 11/3/2020

- TIE SKETCH



- SET 3/4" x 18" IRON REBAR, 1.50#/FT
- ⊕ FOUND HARRISON MONUMENT
- ~ STEEL FENCE POST
- VINYL "T" POST
- ☁ WITNESS TREE

ADAMS COUNTY

Survey Monument Record

TYPE OF MONUMENT: Standard Harrison

STATE PLANE COORDINATES: N _____

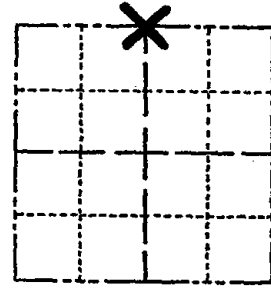
E _____

ELEVATION — M.S.L. DATUM: _____

THETA ANGLE: _____

FIELD BOOK: _____ PAGE _____

CORNER NO. 681 ⁽⁴⁶⁾
 SECTION 16
 TOWN 16
 RANGE 7



LOCATION
(Indicated by 'X')

SEAL:



BASIS FOR MONUMENT LOCATION

(Use reverse side if necessary)

Show info such as: History of corner, with reference to Vol. and pg, dates, surveyor; exact description of monument replaced; if location computed, by taped or EDM traverse; landowner remarks, etc.

Ran EDM/transit traverse around Sections 9 and 16, and to adjacent section corners to determine search areas.

Could find no evidence of the original corner or any remonumentation.

Set corner on line between adjacent section corners and on extension of line from North Quarter corner and Center of Section 9.

CORNER	O.K.	3-28-77	GR-55
"	"	1-6-87	GR
"	"	1-2-92	GR-56
"	"	3-6-02	JG

CERTIFIED CORRECT:
Dale C. Hagen
 Registered Land Surveyor
 DATE: 5/30/78

TIE SKETCH

OK 5-5-07 JG-55 OK 01-11-12 MS

(Show at least four ties)

ALL
FENCES
DOWN

NOTE: Ties in trees to
nail in disc.

