

PUBLIC LAND SURVEY MONUMENT RECORD

TYPE OF MONUMENT: HARRISON
ADAMS COUNTY COORDINATES, NAD 83 (2007)

N. 185921.524

E. 575971.961

ELEVATION- DATUM

FIELD WORK DATE: 09/16/2020

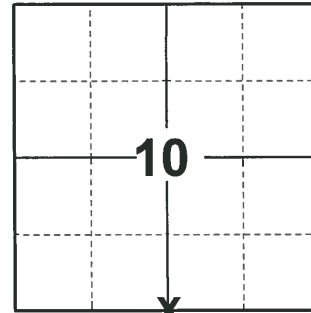
BASIS FOR MONUMENT LOCATION

1976 - PLS 1103 RAN EDM/TRANSIT TRAVERSE AROUND SECTION 10 TO ADJACENT SECTION CORNERS. EXCAVATION WITH BACKHOE YIELDED NO EVIDENCE OF THE ORIGINAL CORNER OR ANY EVIDENCE OF REMONUMENTATION OF THE CORNER. SET CORNER EQUIDISTANT AND ON LINE BETWEEN THE SOUTHEAST AND SOUTHWEST CORNERS OF SECTION 10.

2008 - PLS 2663 PRIOR TO ROAD CONSTRUCTION OF CTH "E", FOUND STANDARD HARRISON MONUMENT IN PLACE AND RECORDED LOCATION. AFTER THE ROAD CONSTRUCTION OF CTH "E" WAS COMPLETED, FOUND SAID HARRISON MONUMENT UN-DISTURBED, ±4" BELOW THE ROAD SURFACE. SET SURVEY MARKER PIN (SMP) IN NEW BITUMINOUS OVER HARRISON MONUMENT AND FOUR NEW WITNESS MONUMENTS.

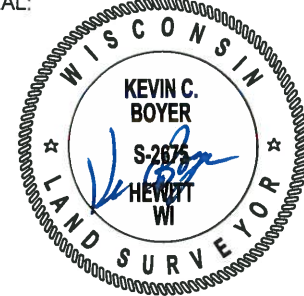
2008 - PLS 2559 FOUND SURVEY MARKER NAIL AT SURFACE AND ACCEPTED IT AS THE TRUE CORNER LOCATION. BELIEVED THE MONUMENT WAS REMOVED OR COVERED DURING THE CTH "E" CONSTRUCTION (2008). THEN ESTABLISHED ACCESSORIES.

2020 - PLS 2675 FOUND HARRISON 4"± BELOW THE ROAD SURFACE AND 4 TIES. THE MONUMENT AGREES WITH ALL 4 TIES. ACCEPTED THE HARRISON AS THE CORNER LOCATION. MEASURED TO A FOUND PROPERTY IRON AND THE 4 EXISTING TIES.



LOCATION
(INDICATE CORNER BY "X")

SEAL:



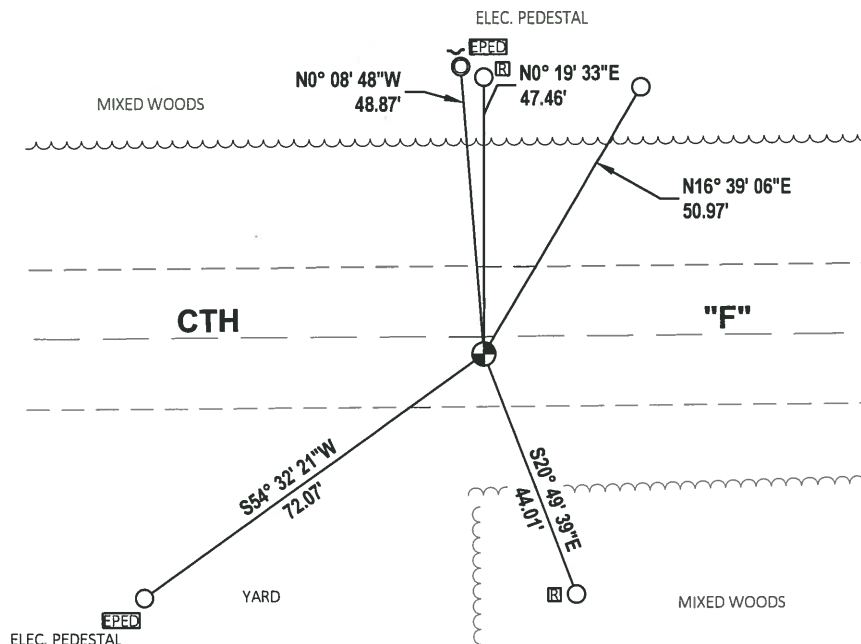
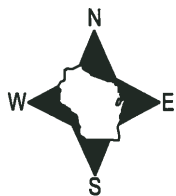
DATA SHOWN HERE ON THIS TIE SHEET IS CORRECT AND COMPLETE TO THE BEST OF MY KNOWLEDGE AND BELIEF.

PROFESSIONAL LAND SURVEYOR

DATE 11/3/2020

- TIE SKETCH

NOTE: THE CORNER LANDS 3'± SOUTH OF CTH "E" CENTERLINE.



- FOUND 3/4" IRON ROD
- FOUND 1-1/4" O.D. IRON PIPE
- ⊙ FOUND HARRISON MONUMENT
- ┌ STEEL FENCE POST
- ▣ RIGHT-OF-WAY GUARD POST

U. S. Public Land Survey Monument Record

ADAMS COUNTY

TYPE OF MONUMENT: Survey Marker Nail

STATE PLANE COORDINATES: N _____

E _____

ELEVATION -- M.S.L. DATUM: _____

THETA ANGLE: _____

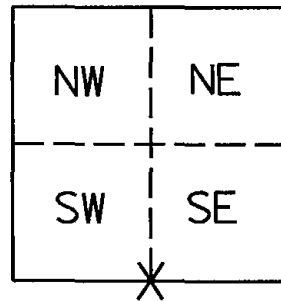
FIELD BOOK: _____

CORNER NO. 48

SECTION 10

TOWN 16 N

RANGE 07 E



LOCATION
(Indicated by "X")

BASIS FOR MONUMENT LOCATION

(Use reverse side if necessary)

Show information such as: History of corner, with reference to Vol. and pg. dates, surveyor; exact description of monument established by you to perpetuate the location of this point, landowner remarks, etc.

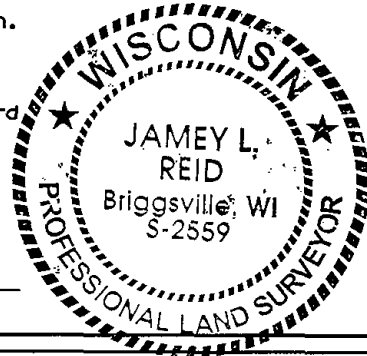
January 23, 1976 - Dale C. Hagen ran EDM / transit traverse around Sec. 10 to adjacent Section Corners. Excavation yielded no evidence of original corner or evidence of a remonumented corner. Set corner (Standard Harrison Monument) equidistant and on line between the Southeast and Southwest corners of Section 10.

10-27-08 - I found a Survey Marker Nail at surface and accepted it as the true corner location.
I believe the monument was removed or covered during the CTH E construction (2008).
I then established accessories as shown.

SURVEYOR'S CERTIFICATE:

This is to certify that the corner location on this record was determined by or under my direction and control and that this US Land Survey Monument Record is correct to the best of my knowledge and belief.

Jamey L. Reid 11-18-08
Jamey L. Reid RLS-2559



SEE TIE SHEET
19-SEPT '08
D. KRZANOWSKI

OK 01-11-12 MS

TIE SKETCH

(Show at least four ties)

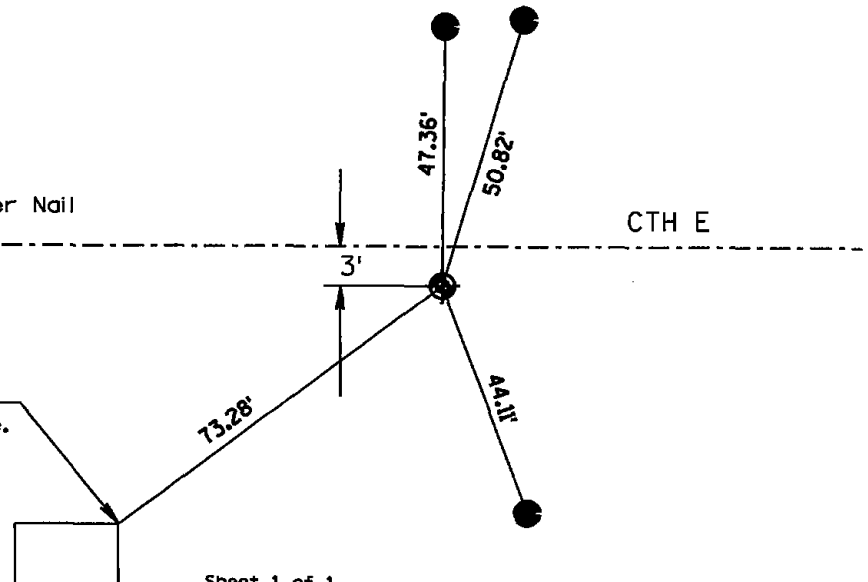
Not to Scale



● - Fd. Survey Marker Nail

● - Fd. 3/4" rebar

Northeast Corner of
Power transformer at base.



Prepared by Ayres Associates
1802 Pankratz Street
Madison, WI 53704
phone: (608)-443-1200

ADAMS COUNTY

Survey Monument Record

TYPE OF MONUMENT: Standard Harrison

STATE PLANE COORDINATES: N _____

E _____

ELEVATION — M.S.L. DATUM: _____

THETA ANGLE: _____

FIELD BOOK: _____ PAGE _____

BASIS FOR MONUMENT LOCATION

(Use reverse side if necessary)

Show info such as: History of corner, with reference to Vol. and pg, dates, surveyor; exact description of monument replaced; if location computed, by taped or EDM traverse; landowner remarks, etc.

Ran EDM/transit traverse around Section 10 and to adjacent section corners.

Excavation with backhoe yielded no evidence of the original corner or any evidence of remonumentation of the corner.

Set corner equidistant and on line between the Southeast and Southwest corners of Section 10.

CORNER	O.K.	2-24-77	GR-SS
"	"	4-20-82	" "
"	"	12-12-86	GR
1-NEW TIE		12-30-91	GR-JG
OK		12-10-96	SS

SEAL:

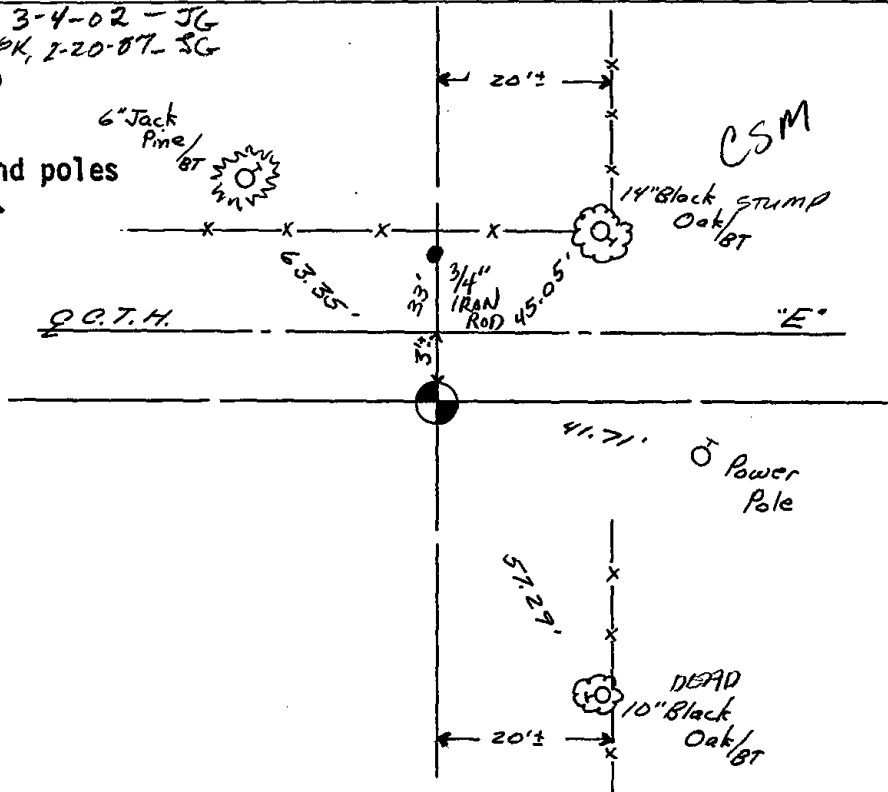


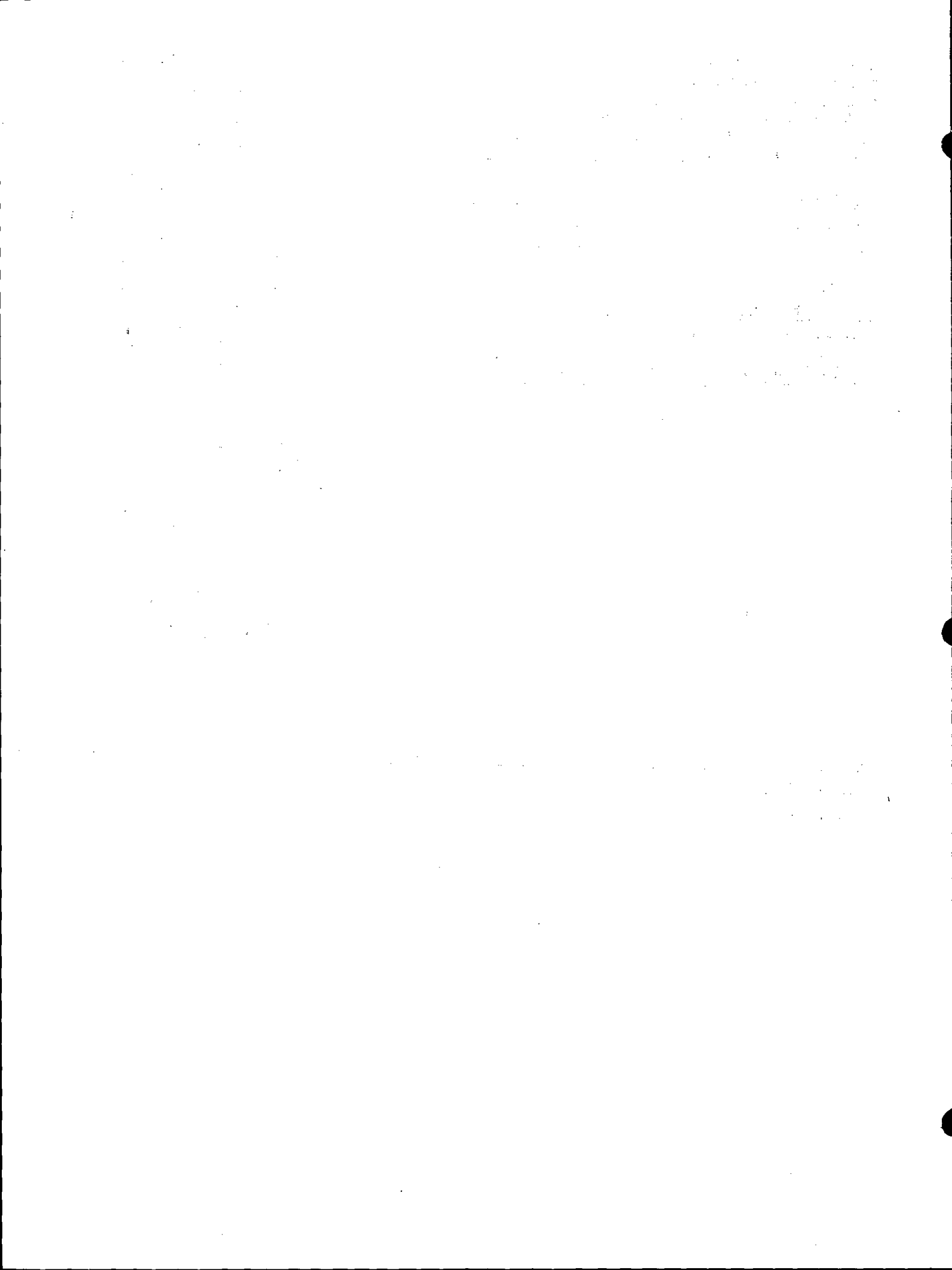
CERTIFIED CORRECT:

Dale C. Hagen
 Registered Land Surveyor
 DATE: January 23, 1976

TIE SKETCH OK 3-4-02-JG
OK, 2-20-07-SC
 (Show at least four ties)

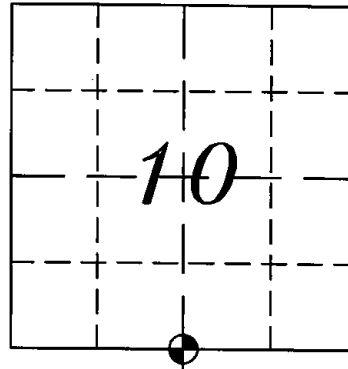
NOTE:
 Ties in trees and poles to nail in disc.





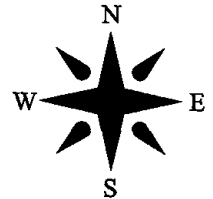
ADAMS COUNTY
SURVEY MONUMENT RECORD

GOVERNMENT CORNER: S 1/4 SEC 10 T16N R7E
 TYPE OF MONUMENT: HARRISON
 STATE PLANE COORDINATES: N _____
 E _____
 ELEVATION: _____
 FIELD BOOK: _____ PAGE _____



CORNER NO. ~~907~~
48
SECTION 10
TOWN 16 NORTH
RANGE 7 EAST

NEW CHESTER
~~CITY, VILLAGE, TOWN~~



BASIS FOR CORNER LOCATION:
 PRIOR TO ROAD CONSTRUCTION OF CTH E, FOUND STANDARD
 HARRISON MONUMENT IN PLACE AND RECORDED LOCATION.
 AFTER THE ROAD CONSTRUCTION OF CTH E WAS COMPLETED,
 FOUND SAID HARRISON MONUMENT UN-DISTURBED, ±4 INCHES
 BELOW THE ROADS SURFACE.

SET SURVEY MARKER PIN (SMP) IN NEW BITUMINOUS OVER
 HARRISON MONUMENT AND FOUR NEW WITNESS MONUMENTS



REGISTERED LAND SURVEYOR
 DATE: 19 SEPTEMBER 2008

TIE SKETCH

