

PUBLIC LAND SURVEY MONUMENT RECORD

TYPE OF MONUMENT: HARRISON
 ADAMS COUNTY COORDINATES, NAD 83 (2007)

N. 185920.338

E. 578615.692

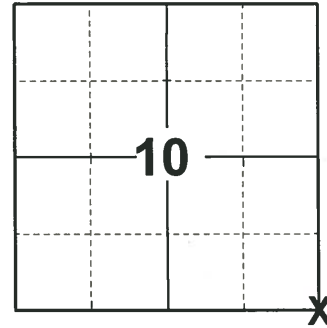
ELEVATION- - - - - DATUM - - - - -

FIELD WORK DATE: 09/16/2020

BASIS FOR MONUMENT LOCATION

1976 - PLS 1103 RAN EDM/TRANSIT TRAVERSE AROUND SECTION 10 AND TO ADJACENT GOVERNMENT CORNERS. EXCAVATION WITH BACKHOE YIELDED NO EVIDENCE OF ANY REMONUMENTATION OF THE ORIGINAL CORNER OR THE ORIGINAL CORNER ITSELF. SET CORNER BY DOUBLING OVER LINE BETWEEN THE NORTHEAST AND EAST QUARTER CORNER OF THIS SECTION 10. THIS LOCATION FITS THE SURROUNDING PHYSICAL EVIDENCE QUITE WELL.

2020 - PLS 2675 FOUND MAG NAIL IN THE ROAD SURFACE, REMOVED AND FOUND HARRISON 8"± BELOW THE ROAD SURFACE. DID NOT RECOVER ANY EXISTING TIES OR WITNESSES. THE MONUMENT WAS VERIFIED TO BE CORRECT BY DOUBLING OVER THE LINE BETWEEN THE NORTHEAST AND EAST QUARTER CORNER OF SECTION 10. ACCEPTED THE HARRISON AS THE CORNER LOCATION, SET 2 NEW TIES AND MEASURED TO 2 FOUND RIGHT-OF-WAY IRONS.



LOCATION
 (INDICATE CORNER BY "X")

SEAL:



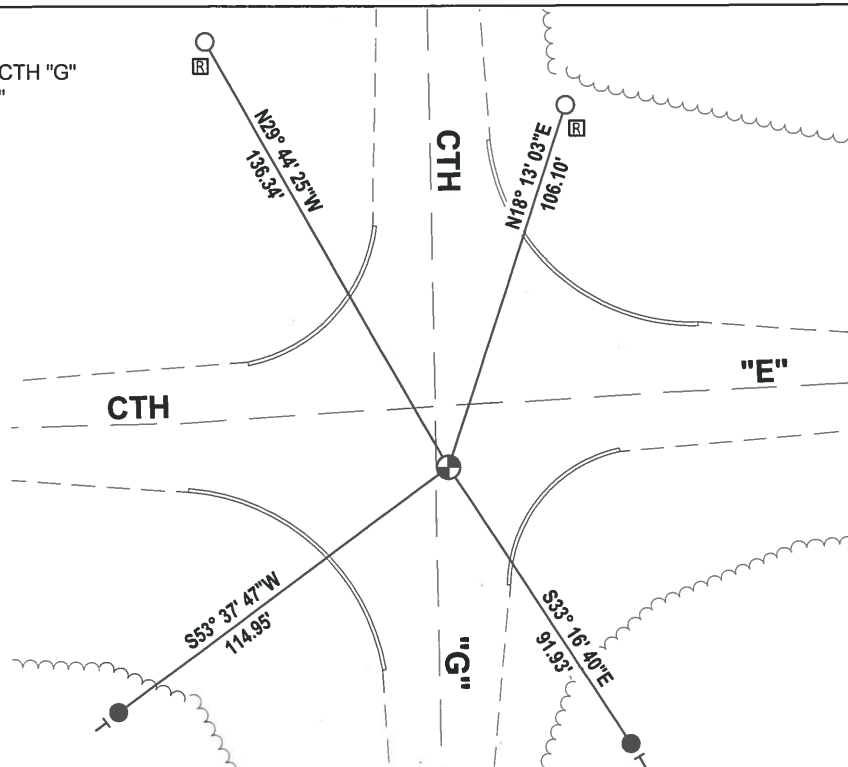
DATA SHOWN HERE ON THIS TIE SHEET IS CORRECT AND COMPLETE TO THE BEST OF MY KNOWLEDGE AND BELIEF.

PROFESSIONAL LAND SURVEYOR

DATE 11/3/2020

- TIE SKETCH

NOTE: THE CORNER LANDS 3.3'± EAST OF CTH "G" CENTERLINE AND 17.1'± SOUTH OF CTH "E" CENTERLINE.



- SET 3/4" x 18" IRON REBAR, 1.50#/FT
- FOUND 3/4" IRON ROD
- ⊕ FOUND HARRISON MONUMENT
- ⊖ VINYL "T" POST
- ⊠ RIGHT-OF-WAY GUARD POST

ADAMS COUNTY

CORNER NO. 902
SECTION 10
TOWN 16
RANGE 7

Survey Monument Record

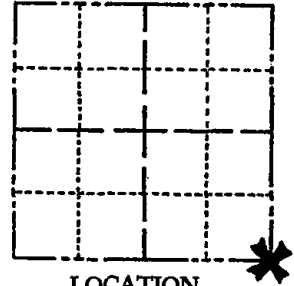
TYPE OF MONUMENT: Standard Harrison

STATE PLANE COORDINATES: N _____
E _____

ELEVATION — M.S.L. DATUM: _____

THETA ANGLE: _____

FIELD BOOK: _____ PAGE _____



LOCATION (Indicated by 'X')

SEAL:

BASIS FOR MONUMENT LOCATION

(Use reverse side if necessary)

Show info such as: History of corner, with reference to Vol. and pg, dates, surveyor; exact description of monument replaced; if location computed, by taped or EDM traverse; landowner remarks, etc.

Ran EDM/transit traverse around Section 10 and to adjacent government corners.

Excavation with backhoe yielded no evidence of any remonumentation of the original corner or the original corner itself.

Set corner by doubling over line between the Northeast and East Quarter corner of this Section 10. This location fits the surrounding physical evidence quite well.



CERTIFIED CORRECT:

Dale C. Hagen
Registered Land Surveyor

DATE: January 23, 1976

CORNER	O.K.	2-24-77	GR-SS
"	O.K.	4-20-82	" "
"	"	12-12-86	GR-
"	"	12-30-91	GR-JG
"	"	12-10-96	SS

TIE SKETCH " 1-09-02 ML

" 2-20-07 JG
(Show at least four ties) 2 NEW TIES 01-11-12 MS

NOTE:

Ties in trees and poles to nail in disc.

