

11
SECTION

16
TOWN

07
RANGE

ADAMS COUNTY

COUNTY CORNER NO: 51

ROMPORTOL ID: 41607110000

PUBLIC LAND SURVEY MONUMENT RECORD

TYPE OF MONUMENT: HARRISON
ADAMS COUNTY COORDINATES, NAD 83 (2007)

N. 185948.076

E. 583893.596

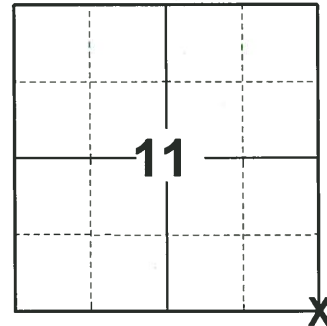
ELEVATION- DATUM

FIELD WORK DATE: 09/01/2020

BASIS FOR MONUMENT LOCATION

1977 - PLS 1103 RAN EDM/T2 TRAVERSE AROUND SECTIONS 1 AND 12, AND PORTIONS OF ADJACENT SECTIONS TO DETERMINE SEARCH AREA FOR INVESTIGATION. EXCAVATION YIELDED P.K. NAIL IN BLACKTOP, BUT NO OTHER EVIDENCE OF THE LOCATION OF THE CORNER. ACCEPTED NAIL AS CORNER (SEE HOLZMILLER'S SURVEYS TO THE SOUTHEAST OF THIS CORNER), AND REPLACED WITH HARRISON.

2020 - PLS 2675 FOUND MAG NAIL IN THE ROAD SURFACE AND DID NOT RECOVER ANY EXISTING WITNESSES OR TIES. REMOVED THE MAG NAIL AND FOUND A HARRISON 6"± BELOW THE ROAD SURFACE. ACCEPTED THE HARRISON AS THE BEST AVAILABLE EVIDENCE OF THE CORNER LOCATION AND SET 4 NEW TIES.



LOCATION
(INDICATE CORNER BY "X")

SEAL:



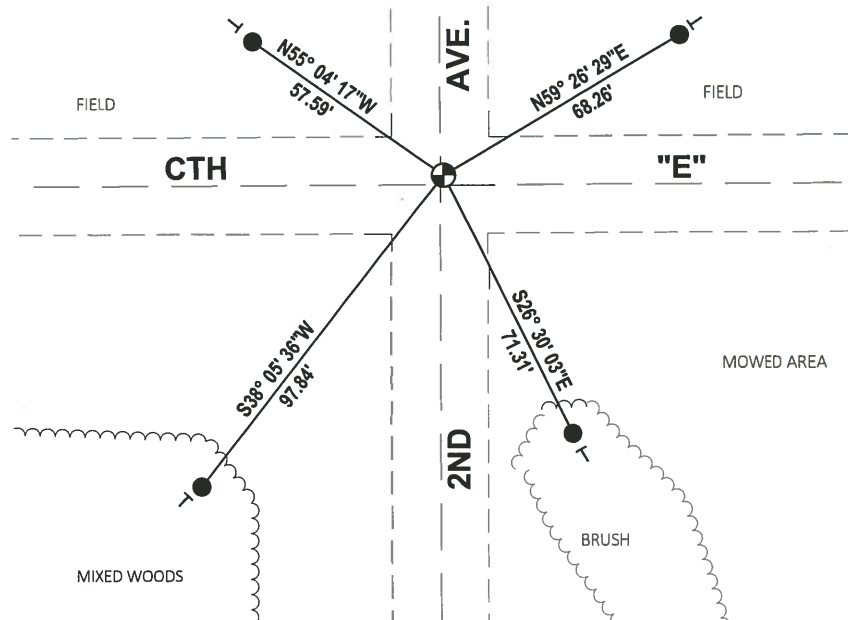
DATA SHOWN HERE ON THIS TIE SHEET IS CORRECT AND COMPLETE TO THE BEST OF MY KNOWLEDGE AND BELIEF.

PROFESSIONAL LAND SURVEYOR

DATE 11/3/2020

TIE SKETCH

NOTE: THE CORNER LANDS .7'± EAST OF 2ND AVE. AND 2.5'± NORTH OF CTH "E".



- SET 3/4" x 18" IRON REBAR, 1.50#/FT
- ⊕ FOUND HARRISON MONUMENT
- ┊ VINYL "T" POST

ADAMS COUNTY

Survey Monument Record

TYPE OF MONUMENT: Harrison

STATE PLANE COORDINATES: N _____

E _____

ELEVATION — M.S.L. DATUM: _____

THETA ANGLE: _____

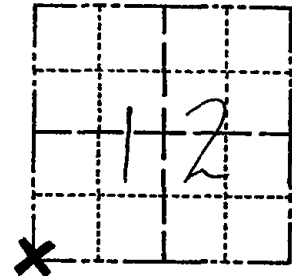
FIELD BOOK: 37 PAGE 58

CORNER NO. 51

SECTION 12

TOWN 16

RANGE 7



LOCATION
(Indicated by 'X')

SEAL:



BASIS FOR MONUMENT LOCATION

(Use reverse side if necessary)

Show info such as: History of corner, with reference to Vol. and pg. dates, surveyor; exact description of monument replaced; if location computed, by taped or EDM traverse; landowner remarks, etc.

Ran EDM/T2 traverse around Sections 1 and 12, and portions of adjacent sections to determine search area for investigation.

Excavation yielded P.K. Nail in blacktop, but no other evidence of the location of the corner.

Accepted nail as corner (See Holzmiller's surveys to the Southeast of this corner), and replaced with Harrison on 7-8-76.

Cor.	OK	4-12-82	GR-SS
"	"	12-23-91	KZ-SS
"	"	12-10-96	SS
"	"	1-07-02	ML
"	"	2-20-87	JG
2 NEW TIES		01-11-72	MS

CERTIFIED CORRECT:

Dale C Hagen
Registered Land Surveyor

DATE: 5-31-77

TIE SKETCH

(Show at least four ties)

NOTE

Ties in trees to nail in disc.

