

18
SECTION

16
TOWN

07
RANGE

ADAMS COUNTY

COUNTY CORNER NO: 55

ROMPORTOL ID: 41607182000

PUBLIC LAND SURVEY MONUMENT RECORD

TYPE OF MONUMENT: HARRISON (BROKEN-TOP)

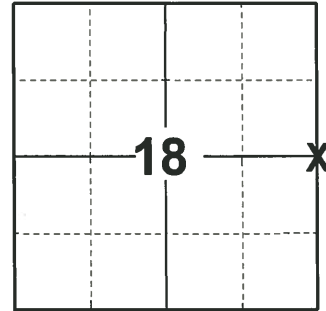
ADAMS COUNTY COORDINATES, NAD 83 (2007)

N. 183243.074

E. 562732.085

ELEVATION- DATUM

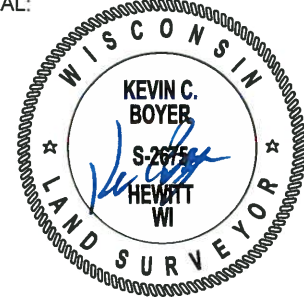
FIELD WORK DATE: 09/29/2020



LOCATION

(INDICATE CORNER BY "X")

SEAL:



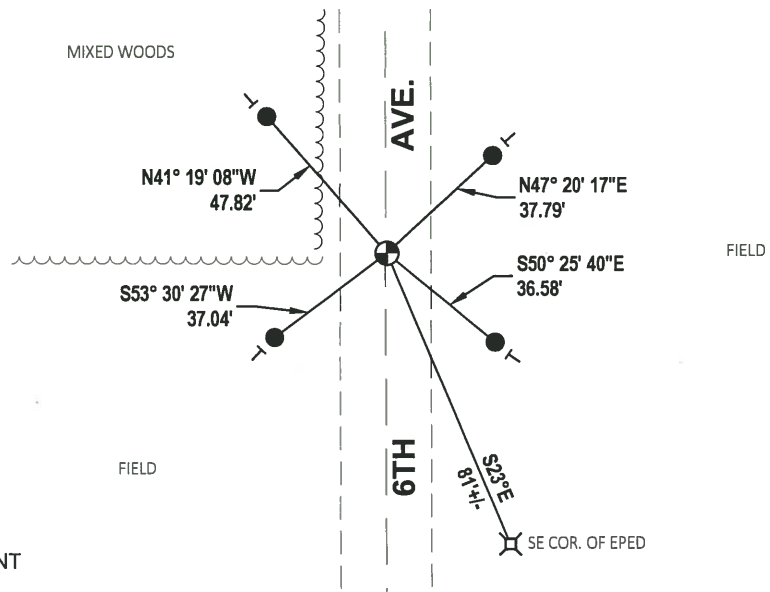
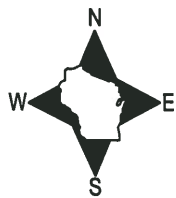
DATA SHOWN HERE ON THIS TIE SHEET IS CORRECT AND COMPLETE TO THE BEST OF MY KNOWLEDGE AND BELIEF.

PROFESSIONAL LAND SURVEYOR

DATE 11/3/2020

TIE SKETCH

NOTE: THE CORNER LANDS ON THE CENTERLINE OF 6TH AVE.

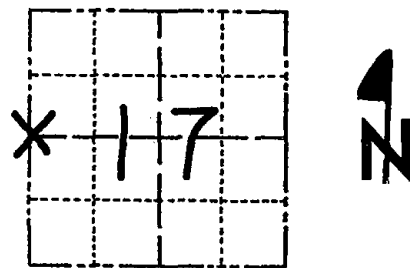


- SET 3/4" x 18" IRON REBAR, 1.50#/FT
- ⊕ FOUND HARRISON (BROKEN-TOP) MONUMENT
- VINYL "T" POST

Government Land Corner Certificate

ADAMS County
 TYPE OF MONUMENT: HARRISON
 STATE PLANE COORDINATES: N _____
 E _____
 ELEVATION — M.S.L. DATUM: _____
 THETA ANGLE: _____
 FIELD BOOK: 57 PAGE 93
 DRAWN BY: B.S.

CORNER NO. 55
 SECTION 17
 TOWN 16
 RANGE 7



LOCATION
(Indicated by 'X')

BASIS FOR MONUMENT LOCATION

Show info such as: History of corner, with reference to Vol. and pg., dates, surveyor; exact description of monument replaced; if location computed, by taped or EDM traverse; landowner remarks, etc. (Use reverse side if necessary)

No resurveys of record. Excavated with backhoe. Found 5 x 7 x 14" pointed blue granite stone down 18". Lowered stone and set Harrison on top. Location verified by EDM traverse.

SEAL:



DATA SHOWN HERE ON CERTIFIED CORRECT:

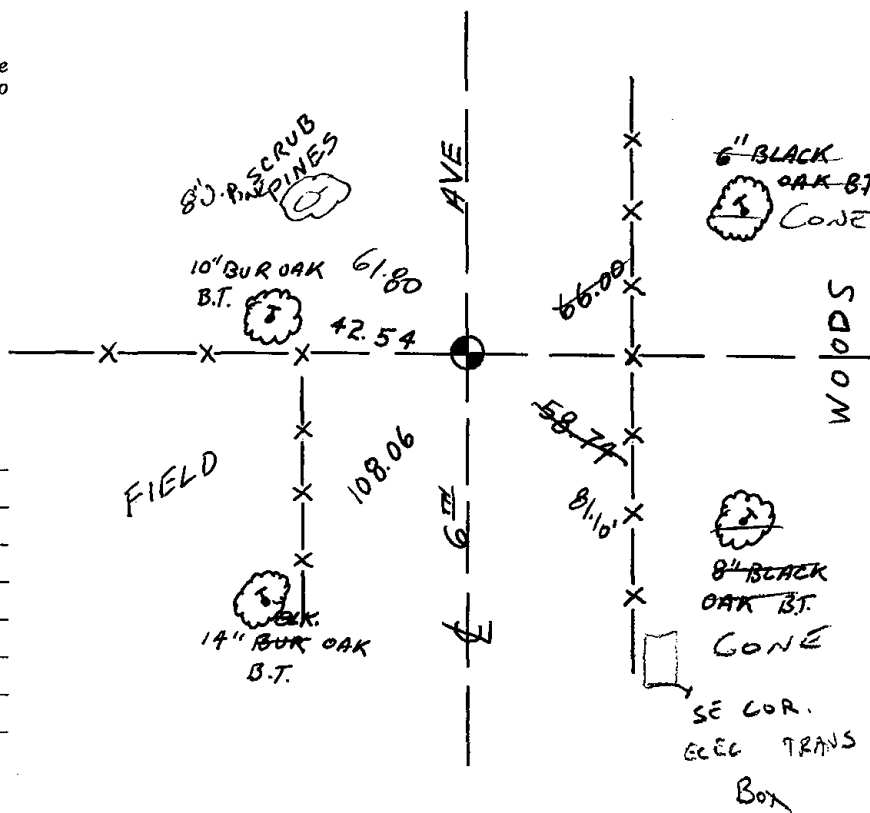
Anthony B. Kiedrowski
 Registered Land Surveyor

DATE: 5/11/79

Cor. OK	3-22-82	GR-55
OK	12-10-86	GR
"	12-26-91	KZ-GR
"	1-6-97	JG-55
"	12-14-01	ML

TIE SKETCH

Show at least four ties, also fence lines, roads, topo, size and type of witness trees' and if off road - best way to arrive at corner.



MAINTENANCE RECORD

Date	Init.	Remarks
5-15-07	SG	Cor OK
01-18-12	MS	OK