

16 SECTION 16 TOWN 07 RANGE

ADAMS COUNTY

COUNTY CORNER NO: 57
ROMPORTOL ID: 41607162000

PUBLIC LAND SURVEY MONUMENT RECORD

TYPE OF MONUMENT: HARRISON
ADAMS COUNTY COORDINATES, NAD 83 (2007)

N. 183280.847

E. 573330.247

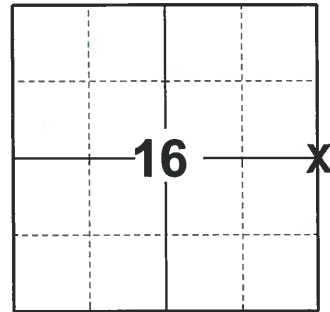
ELEVATION- DATUM

FIELD WORK DATE: 09/28/2020

BASIS FOR MONUMENT LOCATION

1975 - PLS 1103 RAN EDM/TRANSIT TRAVERSE AROUND SECTION 9 AND 16 AND TO ADJACENT SECTION CORNERS TO DETERMINE SEARCH AREAS. EXCAVATION WITH BACKHOE YIELDED NO EVIDENCE OF THE ORIGINAL CORNER OR ANY SUBSEQUENT REMONUMENTATION. SET CORNER EQUIDISTANT AND ONLINE BETWEEN ADJACENT SECTION CORNERS.

2020 - PLS 2675 FOUND HARRISON 6"± ABOVE THE GROUND AND 2 WITNESSES. THE MONUMENT AGREES WITH BOTH THE WITNESSES. ACCEPTED THE HARRISON AS THE CORNER LOCATION. SET 4 NEW TIES AND MEASURED TO THE EXISTING WITNESSES.



LOCATION
(INDICATE CORNER BY "X")

SEAL:



DATA SHOWN HERE ON THIS TIE SHEET IS CORRECT AND COMPLETE TO THE BEST OF MY KNOWLEDGE AND BELIEF.

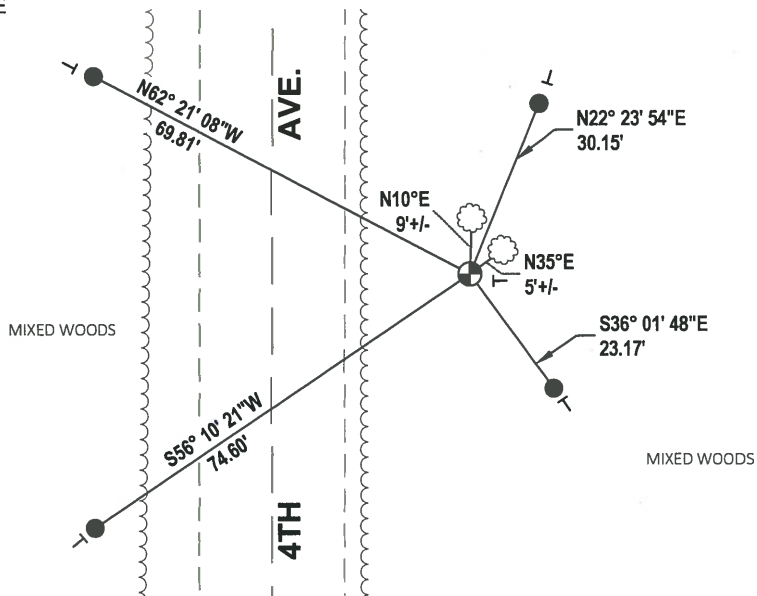
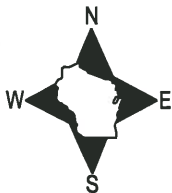
PROFESSIONAL LAND SURVEYOR

DATE 11/3/2020

- TIE SKETCH

NOTE: THE CORNER LANDS 32.5'± EAST OF 4TH AVE. CENTERLINE.

NOTE: CORNER LANDS 325'± NORTH OF WHERE THE OVERHEAD ELECTRIC CROSSES 4TH AVE.



ADAMS COUNTY

Survey Monument Record

TYPE OF MONUMENT: Standard Harrison

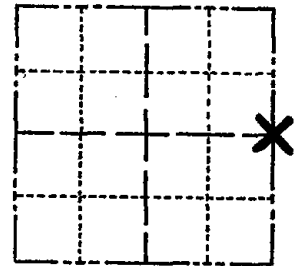
STATE PLANE COORDINATES: N _____
E _____

ELEVATION — M.S.L. DATUM: _____

THETA ANGLE: _____

FIELD BOOK: _____ PAGE _____

CORNER NO. 683 ⁽⁵⁷⁾
SECTION 16
TOWN 16
RANGE 7



LOCATION
(Indicated by 'X')

SEAL:



BASIS FOR MONUMENT LOCATION

(Use reverse side if necessary)

Show info such as: History of corner, with reference to Vol. and pg. dates, surveyor; exact description of monument replaced; if location computed, by taped or EDM traverse; landowner remarks, etc.

Ran EDM/transit traverse around Section 9 and 16 and to adjacent section corners to determine search areas.

Excavation with backhoe yielded no evidence of the original corner or any subsequent remonumentation.

Set corner equidistant and on line between adjacent section corners.

CORNER	O.K.	3-28-77	GR-55
COR	O.K.	4-20-82	" "
"	"	11-26-86	GR
"	"	12-30-91	GR-56
"	"	12-6-96	SS

CERTIFIED CORRECT:
Dale C. Hagen
Registered Land Surveyor
DATE: 3/30/78

TIE SKETCH OK 3-4-02 - JG
OK, 5-15-07 - JG
(Show at least four ties)

3 TIES GONE / 2 NEW 01-23-12 MS

SEE HOSKINS SURVEY 1986
NOTE: Ties in trees to nail in disc.

