

## PUBLIC LAND SURVEY MONUMENT RECORD

TYPE OF MONUMENT: HARRISON (BROKEN-TOP)  
 ADAMS COUNTY COORDINATES, NAD 83 (2007)

N. 180575.747

E. 560093.080

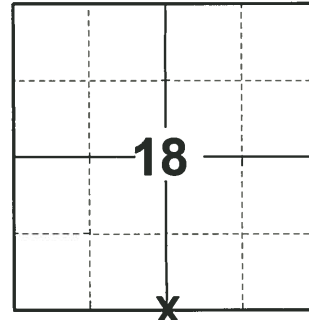
ELEVATION-      DATUM     

FIELD WORK DATE: 09/29/2020

### BASIS FOR MONUMENT LOCATION

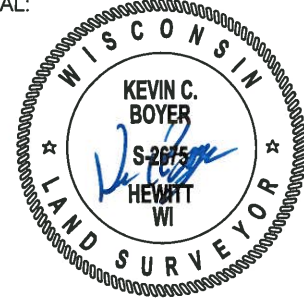
1979 - PLS 1478 SET CORNER OPPOSITE POSSESSION AND ON CENTERLINE OF TOWN ROAD. THE TOTAL DISTANCE ALONG THE SOUTH LINE OF SECTION 18 VARIES GREATLY FROM THE ORIGINAL DISTANCE AND A PROPORTIONATE DISTANCE WOULD NOT "FIT" SECTION.

2020 - PLS 2675 FOUND MAG NAIL IN THE ROAD SURFACE, REMOVED AND FOUND HARRISON (BROKEN-TOP) 6"± BELOW THE ROAD SURFACE AND DID NOT RECOVER ANY EXISTING TIES OR WITNESSES. ACCEPTED THE HARRISON (BROKEN-TOP) AS THE BEST AVAILABLE EVIDENCE OF THE CORNER LOCATION. SET 3 NEW TIES AND MEASURED TO A FOUND PROPERTY IRON.



**LOCATION**  
 (INDICATE CORNER BY "X")

SEAL:



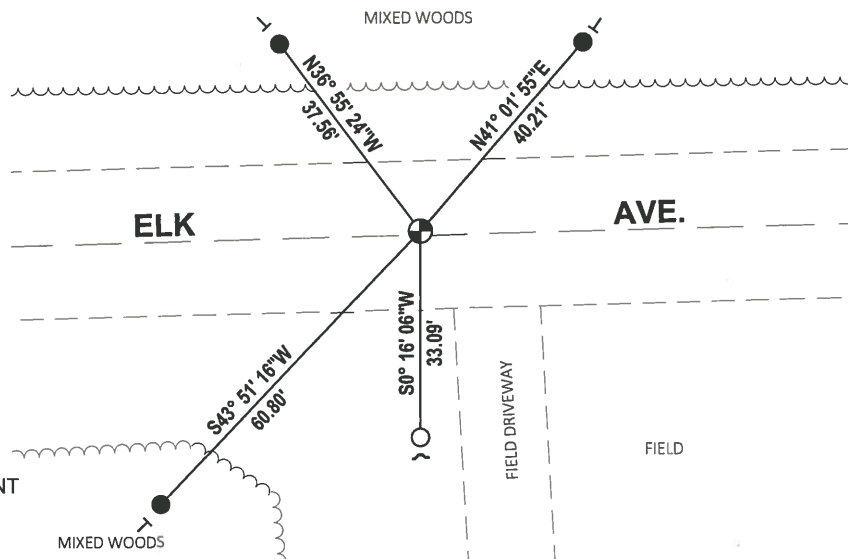
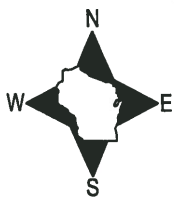
DATA SHOWN HERE ON THIS TIE SHEET IS CORRECT AND COMPLETE TO THE BEST OF MY KNOWLEDGE AND BELIEF.

PROFESSIONAL LAND SURVEYOR

DATE 11/3/2020

### - TIE SKETCH

NOTE: THE CORNER LANDS 1± NORTH OF ELK AVE. CENTERLINE.



- SET 3/4" x 18" IRON REBAR, 1.50#/FT
- FOUND 3/4" IRON ROD
- ⊕ FOUND HARRISON (BROKEN-TOP) MONUMENT
- ✓ STEEL FENCE POST
- ┌ VINYL "T" POST



