

PUBLIC LAND SURVEY MONUMENT RECORD

TYPE OF MONUMENT: HARRISON (BROKEN-TOP)
ADAMS COUNTY COORDINATES, NAD 83 (2007)

N. 180565.181

E. 568056.233

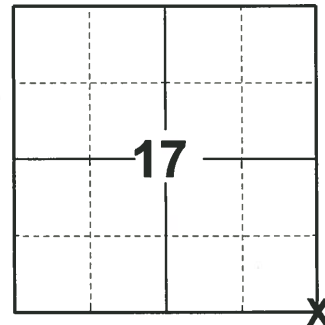
ELEVATION- DATUM

FIELD WORK DATE: 09/28/2020

BASIS FOR MONUMENT LOCATION

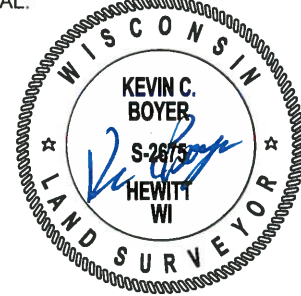
1974 - PLS 878 EXCAVATED WITH BACKHOE. FOUND 2"X2"X16" WOOD STAKE AND NOTHING ELSE. THIS WAS JUST ABOUT THE SAME PLACE THAT HOLZMILLER HAD SET NAIL IN BLACKTOP. ACCEPTED POINT AS CORRECT.

2020 - PLS 2675 FOUND HARRISON (BROKEN-TOP) 8" BELOW THE ROAD SURFACE, 1 TIE, AND 1 WITNESS. THE MONUMENT AGREES WITH THE EXISTING TIE AND WITNESS. ACCEPTED THE HARRISON (BROKEN-TOP) AS THE CORNER LOCATION. SET 3 NEW TIES AND MEASURED TO THE EXISTING TIE AND WITNESS.



LOCATION
(INDICATE CORNER BY "X")

SEAL:



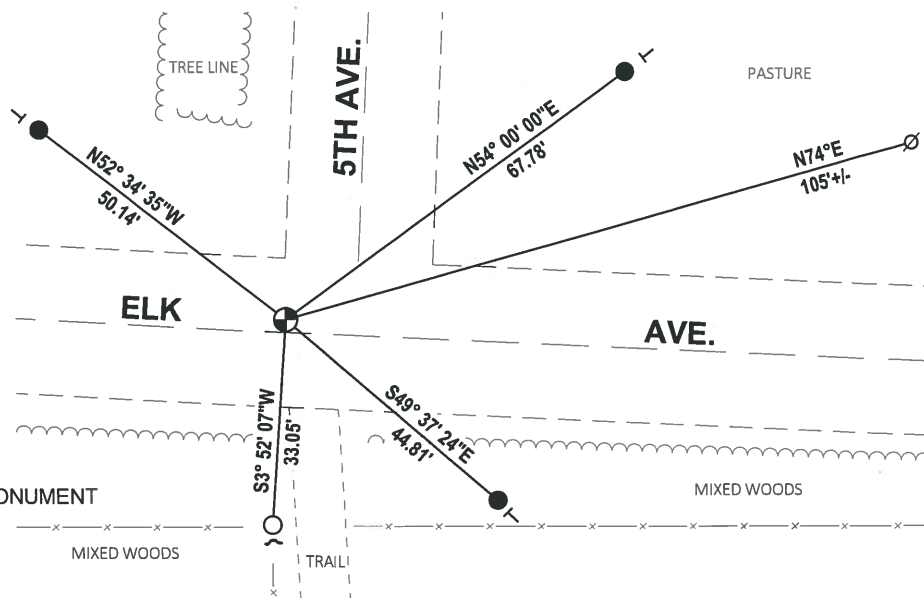
DATA SHOWN HERE ON THIS TIE SHEET IS CORRECT AND COMPLETE TO THE BEST OF MY KNOWLEDGE AND BELIEF.

PROFESSIONAL LAND SURVEYOR

DATE 11/3/2020

- TIE SKETCH

NOTE: THE CORNER LANDS 2± NORTH OF ELK AVE. CENTERLINE.



- SET 3/4" x 18" IRON REBAR, 1.50#/FT
- FOUND 3/4" IRON ROD
- ⊕ FOUND HARRISON (BROKEN-TOP) MONUMENT
- ⊘ WITNESS POWER POLE
- ✓ STEEL FENCE POST
- VINYL "T" POST

ADAMS COUNTY

Survey Monument Record

TYPE OF MONUMENT: Harrison standard

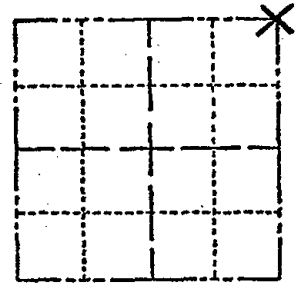
STATE PLANE COORDINATES: N _____
E _____

ELEVATION — M.S.L. DATUM: _____

THETA ANGLE: _____

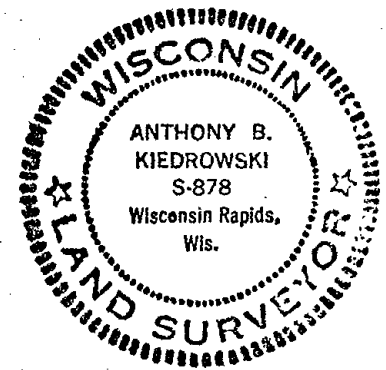
FIELD BOOK: _____ PAGE _____

CORNER NO. 390 (65)
SECTION 20
TOWN 16
RANGE 7



LOCATION
(Indicated by 'X')

SEAL:



CERTIFIED CORRECT:

Anthony B. Kiedrowski
Registered Land Surveyor

DATE: 6/2/74

BASIS FOR MONUMENT LOCATION

(Use reverse side if necessary)

Show info such as: History of corner, with reference to Vol. and pg, dates, surveyor; exact description of monument replaced; if location computed, by taped or EDM traverse; landowner remarks, etc.

Excavated with backhoe.
Found 2"x2"x16" Wood stake and nothing else. This was just about the same place that Holzmilller had set nail in blacktop. Accepted point as correct.

CORNER	O.K.	3-28-77	GR-SS
"	"	3-22-82	"
"	"	12-12-86	GR
"	"	11-25-91	GR-KZ
"	"	1/6/97	30-SS
"	"	12-14-01	ML

TIE SKETCH OK, 5-15-07-JG
OK 01-23-12 MS GONE
(Show at least four ties)

