

15  
SECTION

16  
TOWN

07  
RANGE

# ADAMS COUNTY

COUNTY CORNER NO.: 68

ROMPORTOL ID: 41607150020

## PUBLIC LAND SURVEY MONUMENT RECORD

TYPE OF MONUMENT: HARRISON (BROKEN-TOP)  
ADAMS COUNTY COORDINATES, NAD 83 (2007)

N. 180637.690

E. 575967.851

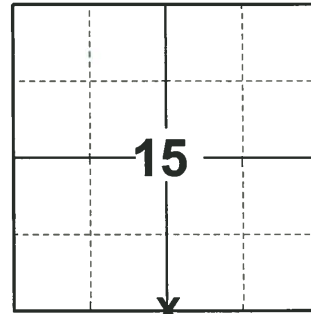
ELEVATION- \_\_\_\_\_ DATUM \_\_\_\_\_

FIELD WORK DATE: 09/21/2020

### BASIS FOR MONUMENT LOCATION

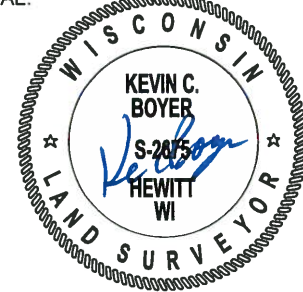
1977 - PLS 878 NO RESURVEYS ON RECORD. NO HELPFUL POSSESSION LINES. DID NOT DIG SINCE SEARCH AREA COULD NOT BE DETERMINED. SET CORNER ON LINE AND EQUIDISTANT BETWEEN SECTION CORNERS.

2020 - PLS 2675 FOUND HARRISON (BROKEN-TOP) 18"± BELOW THE ROAD SURFACE AND 2 WITNESSES. THE MONUMENT AGREES WITH BOTH THE WITNESSES. ACCEPTED THE HARRISON (BROKEN-TOP) AS THE CORNER LOCATION. SET 4 NEW TIES AND MEASURED TO THE EXISTING WITNESSES.



**LOCATION**  
(INDICATE CORNER BY "X")

SEAL:



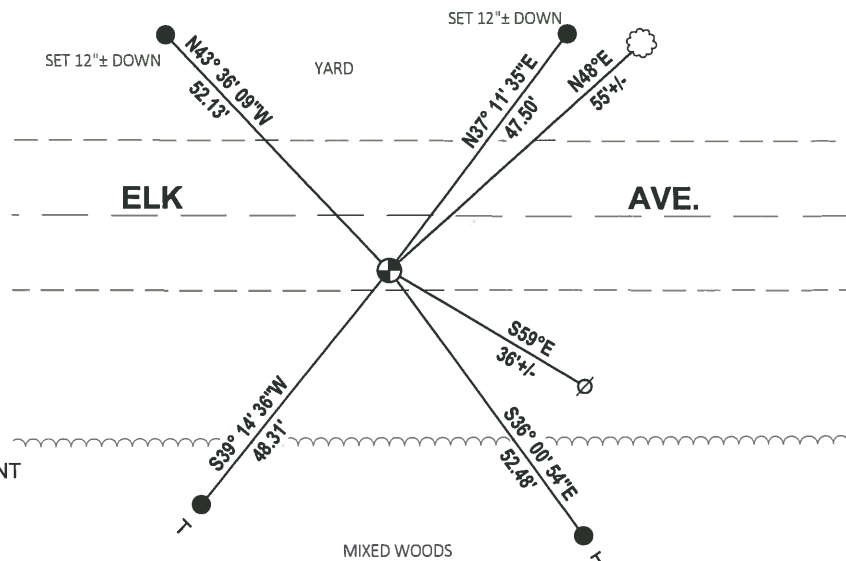
DATA SHOWN HERE ON THIS TIE SHEET IS CORRECT AND COMPLETE TO THE BEST OF MY KNOWLEDGE AND BELIEF.

PROFESSIONAL LAND SURVEYOR

DATE 11/3/2020

### TIE SKETCH

NOTE: THE CORNER LANDS 9'± SOUTH OF ELK AVE. CENTERLINE.

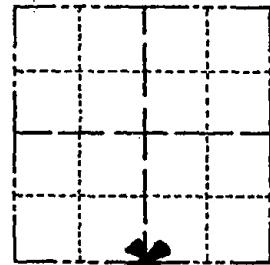


- SET 3/4" x 18" IRON REBAR, 1.50#/FT
- ⊕ FOUND HARRISON (BROKEN-TOP) MONUMENT
- ∅ WITNESS POWER POLE
- ┊ VINYL "T" POST
- ☼ WITNESS TREE

# Government Land Corner Certificate

ADAMS County  
 TYPE OF MONUMENT: HARRISON set 10/23/79  
 STATE PLANE COORDINATES: N \_\_\_\_\_  
 E \_\_\_\_\_  
 ELEVATION — M.S.L. DATUM: \_\_\_\_\_  
 THETA ANGLE: \_\_\_\_\_  
 FIELD BOOK: 57 PAGE 48  
 DRAWN BY: SCOTT SORENSEN

CORNER NO. 68  
 SECTION 15  
 TOWN 16  
 RANGE 7



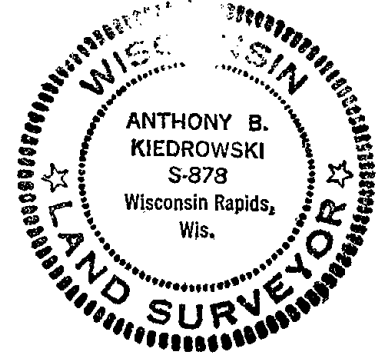
LOCATION  
 (Indicated by 'X')

## BASIS FOR MONUMENT LOCATION

Show info such as: History of corner, with reference to Vol. and pg., dates, surveyor; exact description of monument replaced; if location computed, by taped or EDM traverse; landowner remarks, etc. (Use reverse side if necessary)

No resurveys on record. No helpful possession lines. Did not dig since I could not minimize the search area. Corner set on line equidistant between section corners.

SEAL:



COR	OK	GR-SS	4-13-82
"	"	GL	12-12-86
"	"	GR-JG	12-30-91

DATA SHOWN HERE ON  
 CERTIFIED CORRECT:

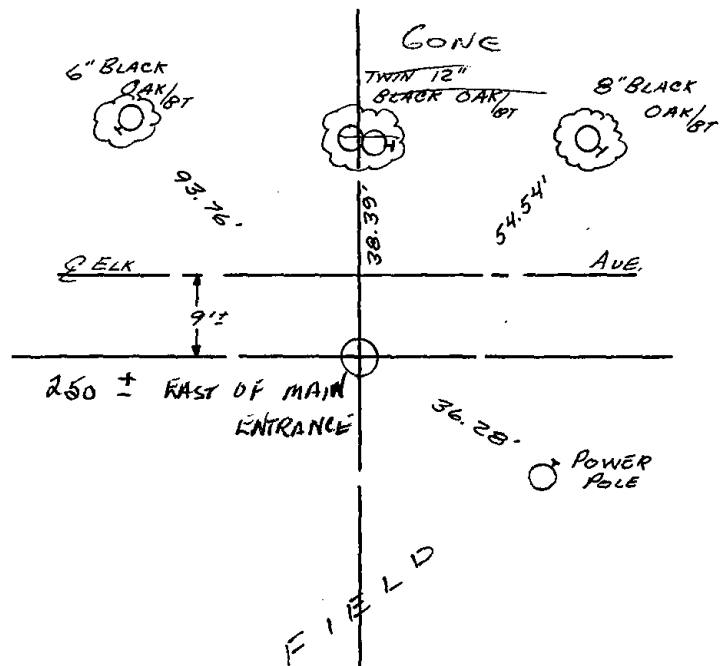
Anthony B. Kiedrowski  
 Registered Land Surveyor

DATE: 12/8/77

## TIE SKETCH

Show at least four ties, also fence lines, roads, topo, size and type of witness trees' and if off road - best way to arrive at corner.

Ties are to nail and disc



## MAINTENANCE RECORD

Date	Init.	Remarks
4-13-82	GR-SS	OK.
12-9-86	GL	"
SEE ATTACHED SHEET, MC, 9-2-99		
OK	ML	12-29-01
OK	JG	2-22-04
01-20-12	MS	OK