

13
SECTION

16
TOWN

07
RANGE

ADAMS COUNTY

COUNTY CORNER NO: 72
ROMPORTOL ID: 41607130020

PUBLIC LAND SURVEY MONUMENT RECORD

TYPE OF MONUMENT: HARRISON
ADAMS COUNTY COORDINATES, NAD 83 (2007)

N. 180652.359

E. 586525.462

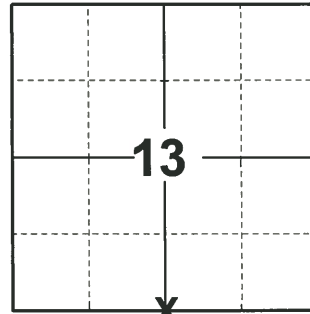
ELEVATION- DATUM

FIELD WORK DATE: 09/15/2020

BASIS FOR MONUMENT LOCATION

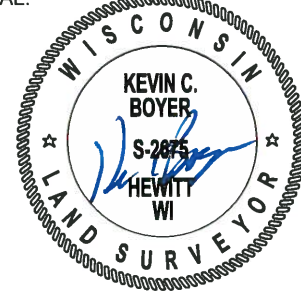
1977 - PLS 1103 RAN EDM/T2 TRAVERSE AROUND SECTIONS 1, AND 12, AND PORTIONS OF SECTION 13 TO DETERMINE SEARCH AREA FOR INVESTIGATION. EXCAVATION YIELDED 2"X30" IRON PIPE OF UNKNOWN ORIGIN, AND NO OTHER EVIDENCE OF THE ORIGINAL CORNER OR ANY REMONUMENTATION ON THIS CORNER. ACCEPTED PIPE AS CORNER AND REMONUMENTED WITH HARRISON MONUMENT.

2020 - PLS 2675 FOUND HARRISON 4"± BELOW THE ROAD SURFACE AND 2 WITNESSES. THE MONUMENT AGREES WITH BOTH WITNESSES. ACCEPTED THE HARRISON AS THE CORNER LOCATION. SET 4 NEW TIES AND MEASURED TO THE EXISTING WITNESSES.



LOCATION
(INDICATE CORNER BY "X")

SEAL:



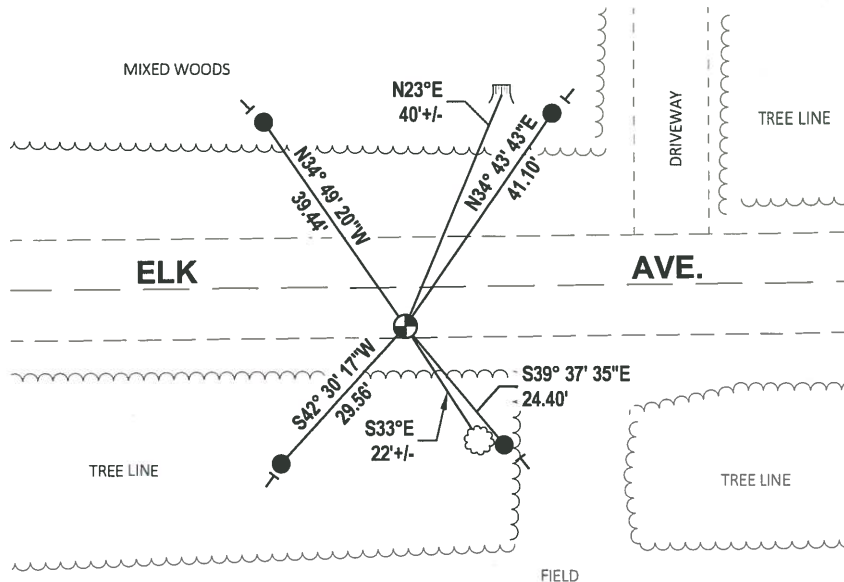
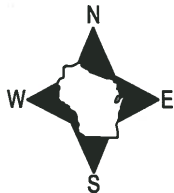
DATA SHOWN HERE ON THIS TIE SHEET IS CORRECT AND COMPLETE TO THE BEST OF MY KNOWLEDGE AND BELIEF.

PROFESSIONAL LAND SURVEYOR

DATE 11/3/2020

- TIE SKETCH

NOTE: THE CORNER LANDS 6'± SOUTH OF ELK AVE. CENTERLINE.



- SET 3/4" x 18" IRON REBAR, 1.50#/FT
- ⊕ FOUND HARRISON MONUMENT
- ⌵ WITNESS STUMP
- ┌ VINYL "T" POST
- ⊗ WITNESS TREE

ADAMS COUNTY

Survey Monument Record

TYPE OF MONUMENT: Harrison

STATE PLANE COORDINATES: N _____

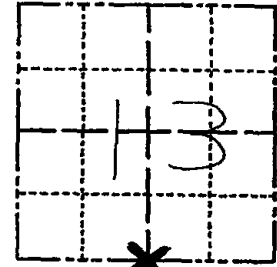
E _____

ELEVATION — M.S.L. DATUM: _____

THETA ANGLE: _____

FIELD BOOK: _____ PAGE _____

CORNER NO. 72
 SECTION 13
 TOWN 16
 RANGE 7



LOCATION
(Indicated by 'X')

SEAL:



BASIS FOR MONUMENT LOCATION

(Use reverse side if necessary)

Show info such as: History of corner, with reference to Vol. and pg, dates, surveyor; exact description of monument replaced; if location computed, by taped or EDM traverse; landowner remarks, etc.

Ran EDM/T2 traverse around Sections 1, and 12, and portions of Section 13 to determine search area for investigation.

Excavation yielded 2"x30" Iron Pipe of unknown origin, and no other evidence of the original corner or any remonumentation on this corner.

Accepted Pipe as corner and remonumented with Harrison Monument.

COR OK 4-13-82 GR-SS
 " OK 12-12-86 GR
 " " 12-23-91 KZ-SS
 ALL OK 12-11-96 JG-SS
 OK 1-09-02 ML-EE
 OK, 2-20-06 - JG

CERTIFIED CORRECT:

Dale C Hagen
 Registered Land Surveyor

DATE: 5-31-77

TIE SKETCH 01-25-12 OK MS

(Show at least four ties)

NOTE

Ties in trees to nail in disc.

