

PUBLIC LAND SURVEY MONUMENT RECORD

TYPE OF MONUMENT: HARRISON
 ADAMS COUNTY COORDINATES, NAD 83 (2007)

N. 177950.758

E. 562731.988

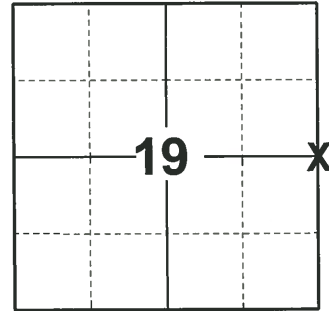
ELEVATION- - - - DATUM - - - -

FIELD WORK DATE: 10/05/2020

BASIS FOR MONUMENT LOCATION

1979 - PLS 1478 SET CORNER EQUIDISTANT AND ONLINE BETWEEN ADJACENT SECTION CORNERS. EXCAVATION WITH BACKHOE YIELDED NO EVIDENCE OF ANY PREVIOUS MONUMENTATION.

2020 - PLS 2675 FOUND HARRISON 4"± BELOW THE ROAD SURFACE AND 1 WITNESS. THE MONUMENT AGREES WITH THE EXISTING WITNESS. ACCEPTED THE HARRISON AS THE CORNER LOCATION. SET 4 NEW TIES AND MEASURED TO THE EXISTING WITNESS.



LOCATION

(INDICATE CORNER BY "X")

SEAL:



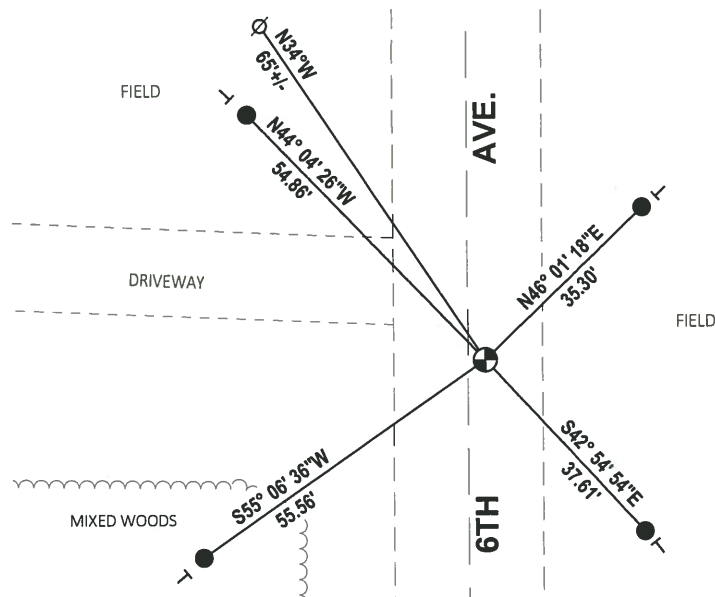
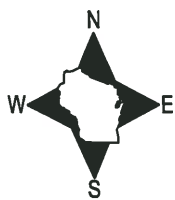
DATA SHOWN HERE ON THIS TIE SHEET IS CORRECT AND COMPLETE TO THE BEST OF MY KNOWLEDGE AND BELIEF.

PROFESSIONAL LAND SURVEYOR

DATE 11/3/2020

TIE SKETCH

NOTE: THE CORNER LANDS 2.7'± EAST OF 6TH AVE. CENTERLINE.

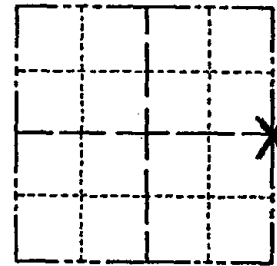


- SET 3/4" x 18" IRON REBAR, 1.50#/FT
- ⊕ FOUND HARRISON MONUMENT
- ⊙ WITNESS POWER POLE
- └ VINYL "T" POST

Government Land Corner Certificate

ADAMS County
 TYPE OF MONUMENT: HARRISON
 STATE PLANE COORDINATES: N _____
 E _____
 ELEVATION — M.S.L. DATUM: _____
 THETA ANGLE: _____
 FIELD BOOK: 71 PAGE 109
 DRAWN BY: R. NUBER

CORNER NO. 75
 SECTION 19
 TOWN 16
 RANGE 7



BASIS FOR MONUMENT LOCATION

Show info such as: History of corner, with reference to Vol. and pg., dates, surveyor; exact description of monument replaced; if location computed, by taped or EDM traverse; landowner remarks, etc. (Use reverse side if necessary)

Set corner equidistant and on line between adjacent section corners.

Excavation with backhoe yielded no evidence of any previous monumentation.

CORNER OK GR-SS 3-22-82
 " GR- 12-15-86
 1-NEW KZ-6R 12-26-91
 OK 1/6/97 JG-SS
 OK 3-4-02 JG
 1 NEW TIE 1-30-07 JG-SS
 1 NEW TIE 01-18-12 MS

SEAL:

LOCATION
(Indicated by 'X')



DATA SHOWN HERE ON
CERTIFIED CORRECT:

Gregory P. Rhinehart
Registered Land Surveyor

DATE: 9/9/79

TIE SKETCH

Show at least four ties, also fence lines, roads, topo, size and type of witness trees and if off road - best way to arrive at corner.

