

## PUBLIC LAND SURVEY MONUMENT RECORD

TYPE OF MONUMENT: HARRISON  
 ADAMS COUNTY COORDINATES, NAD 83 (2007)

N. 177997.354

E. 573302.454

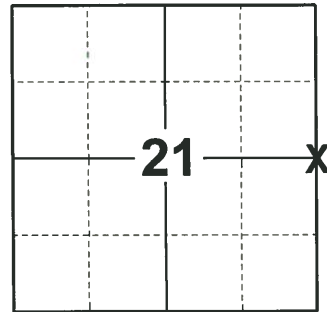
ELEVATION-        DATUM       

FIELD WORK DATE: 08/27/2020

### BASIS FOR MONUMENT LOCATION

1976 - PLS 1103 RAN EDM/T2 TRAVERSE FROM NORTHEAST CORNER OF SECTION 21 TO THE SOUTHEAST CORNER OF SECTION 21 IN SEARCH OF THE EAST QUARTER CORNER. FOUND NO EVIDENCE OF THE ORIGINAL CORNER WITHIN THE SEARCH AREA, BUT DID FIND REMONUMENTATION IN THE FORM OF A 3/4" BY 24" IRON BAR, WHICH FIT THE POSSESSION WELL. REMONUMENTED THE BAR FOUND WITH A HARRISON MONUMENT.

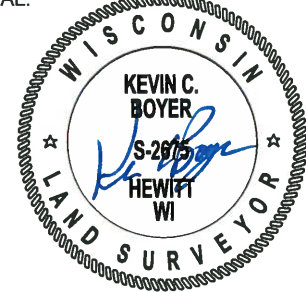
2020 - PLS 2675 FOUND HARRISON FLUSH WITH THE GROUND AND DID NOT RECOVER ANY EXISTING TIES OR WITNESSES. ACCEPTED THE HARRISON AS THE BEST AVAILABLE EVIDENCE OF THE CORNER LOCATION AND SET 4 NEW TIES.



**LOCATION**

(INDICATE CORNER BY "X")

SEAL:



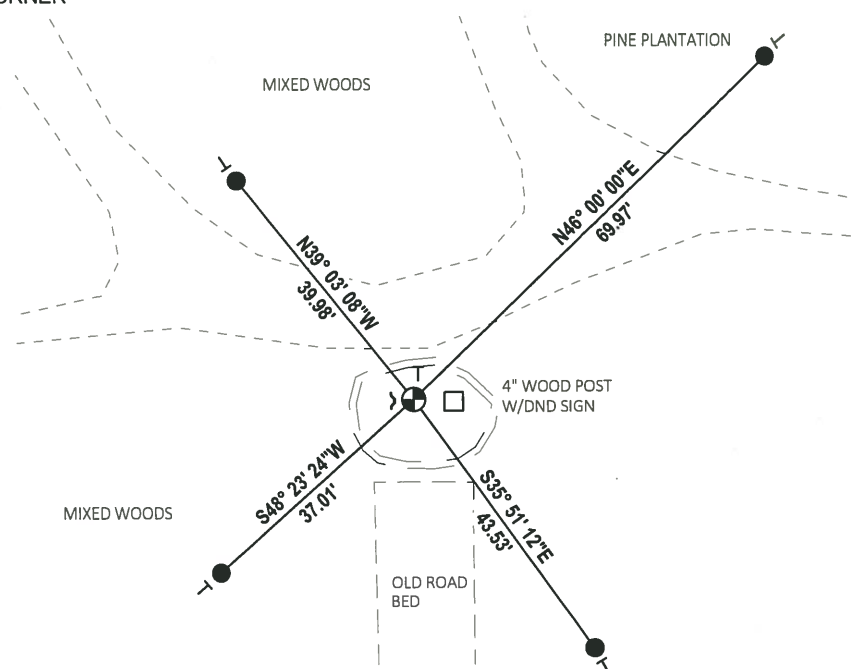
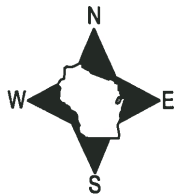
DATA SHOWN HERE ON THIS TIE SHEET IS CORRECT AND COMPLETE TO THE BEST OF MY KNOWLEDGE AND BELIEF.

PROFESSIONAL LAND SURVEYOR

DATE 11/3/2020

### TIE SKETCH

NOTE: ROCKS ARE PILED AROUND THE CORNER MONUMENT.



- SET 3/4" x 18" IRON REBAR, 1.50#/FT
- ⊕ FOUND HARRISON MONUMENT
- ↙ STEEL FENCE POST
- ┆ VINYL "T" POST

**ADAMS COUNTY**

**Survey Monument Record**

TYPE OF MONUMENT: Harrison Monument

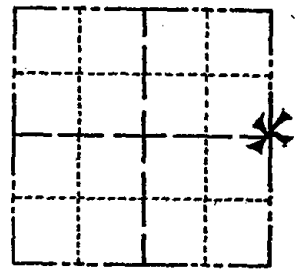
STATE PLANE COORDINATES: N \_\_\_\_\_  
E \_\_\_\_\_

ELEVATION — M.S.L. DATUM: \_\_\_\_\_

THETA ANGLE: \_\_\_\_\_

FIELD BOOK: \_\_\_\_\_ PAGE \_\_\_\_\_

CORNER NO. 932 (77)  
SECTION 21  
TOWN 16 N  
RANGE 7 E



LOCATION  
(Indicated by 'X')

SEAL:



**BASIS FOR MONUMENT LOCATION**

(Use reverse side if necessary)

Show info such as: History of corner, with reference to Vol. and pg, dates, surveyor; exact description of monument replaced; if location computed, by taped or EDM traverse; landowner remarks, etc.

Ran EDM/T2 Traverse from Northeast corner of Section 21 to the Southeast corner of Section 21 in search of the East Quarter corner.

Found no evidence of the original corner within the search area, but did find remonumentation in the form of a 3/4" by 24" iron bar, which fit the possession well.

Remonumented the bar found with a Harrison Monument.

CORNER o.k. 2-22-77 GR-SS  
" " 4-13-82 "  
" " 12-26-91 KR-GR  
NES OK 12-16-96 SS  
SEE ATTACHED SHEET MC+BF, 9-2-99

CERTIFIED CORRECT:

*Dale C. Hagen*  
Registered Land Surveyor  
DATE: April 5, 1976

**TIE SKETCH**

OK 3-6-02-JG  
OK 10-01-07-JG  
OK 01-25-12 MS

(Show at least four ties)

