

23
SECTION

16
TOWN

07
RANGE

ADAMS COUNTY

COUNTY CORNER NO: 79

ROMPORTOL ID: 41607232000

PUBLIC LAND SURVEY MONUMENT RECORD

TYPE OF MONUMENT: HARRISON
ADAMS COUNTY COORDINATES, NAD 83 (2007)

N. 178001.602

E. 583852.955

ELEVATION- DATUM

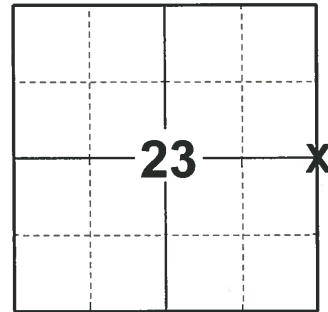
FIELD WORK DATE: 09/30/2020

BASIS FOR MONUMENT LOCATION

1978 - PLS 606 THE E1/2 CORNER IS SET ON A STRAIGHT LINE AND HALF WAY BETWEEN THE SE CORNER THEREOF AND NE CORNER THEREOF, BEING HARRISON MONUMENTS FOUND IN PLACE.

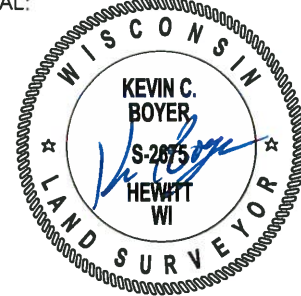
UNKNOWN - PLS 878 AREA EXCAVATED WITH BACKHOE, FOUND NOTHING.

2020 - PLS 2675 FOUND HARRISON 4"± BELOW THE GROUND AND 2 WITNESSES. THE MONUMENT AGREES WITH THE TWO WITNESSES. ACCEPTED THE HARRISON AS THE CORNER LOCATION. SET 4 NEW TIES AND MEASURED TO THE EXISTING WITNESSES.



LOCATION
(INDICATE CORNER BY "X")

SEAL:



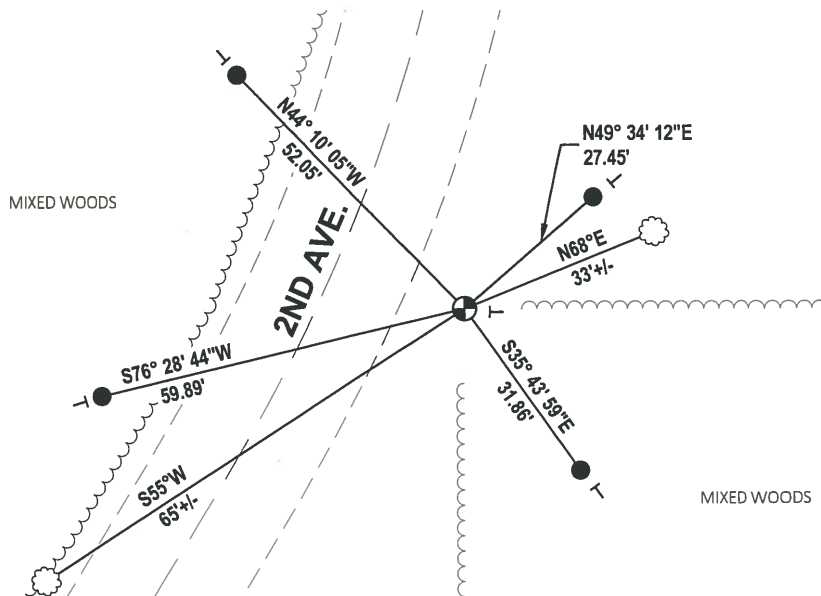
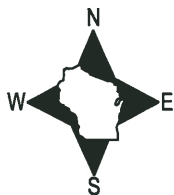
DATA SHOWN HERE ON THIS TIE SHEET IS CORRECT AND COMPLETE TO THE BEST OF MY KNOWLEDGE AND BELIEF.

PROFESSIONAL LAND SURVEYOR

DATE 11/3/2020

- TIE SKETCH

NOTE: THE CORNER LANDS 23.7'± EAST OF 2ND AVE. CENTERLINE.



- SET 3/4" x 18" IRON REBAR, 1.50#/FT
- ⊕ FOUND HARRISON MONUMENT
- VINYL "T" POST
- ☼ WITNESS TREE

ADAMS COUNTY

Survey Monument Record

TYPE OF MONUMENT: HARRISON

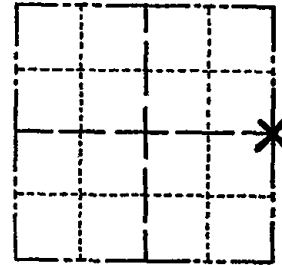
STATE PLANE COORDINATES: N _____
E _____

ELEVATION — M.S.L. DATUM: _____

THETA ANGLE: _____

FIELD BOOK: _____ PAGE _____

CORNER NO. 79
SECTION 23
TOWN T16N
RANGE R7E



LOCATION
(Indicated by 'X')

SEAL:

BASIS FOR MONUMENT LOCATION

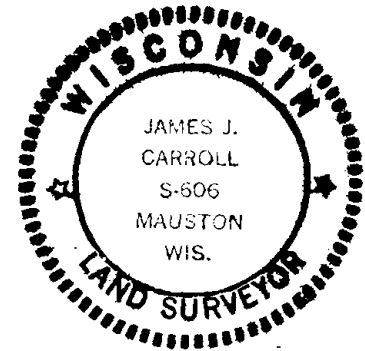
(Use reverse side if necessary)

Show info such as: History of corner, with reference to Vol. and pg, dates, surveyor; exact description of monument replaced; if location computed, by taped or EDM traverse; landowner remarks, etc.

The E $\frac{1}{2}$ corner is set on a straight line and half way between the SE corner thereof and the NE corner thereof, being Harrison monuments found in place.

Area Excavated with Backhoe by R. Kiedrowski - Found nothing.

- 4-20-82 GL-SS OK
- 12-12-86 GL OK
- 12-23-91 K2-SS OK
- 1-15-97 JG-SS OK
- 1-03-02 MK OK
- 5-15-07 JG OK
- 01-25-12 MS-1 NEW TIE



CERTIFIED CORRECT:
James J. Carroll
Registered Land Surveyor
DATE: May 20, 1978

TIE SKETCH

(Show at least four ties)

