

PUBLIC LAND SURVEY MONUMENT RECORD

TYPE OF MONUMENT: HARRISON
 ADAMS COUNTY COORDINATES, NAD 83 (2007)

N. 175253.951

E. 568029.307

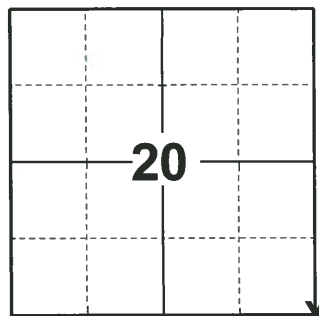
ELEVATION- _____ DATUM _____

FIELD WORK DATE: 10/05/2020

BASIS FOR MONUMENT LOCATION

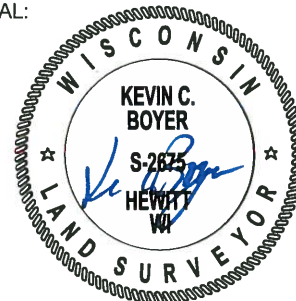
1979 - PLS 1478 THE LOCATION OF THIS CORNER WAS DETERMINED BY DOUBLING OVER THE LINE BETWEEN THE SW CORNER OF THIS SECTION AND THE S1/4 CORNER OF THIS SECTION. THIS LOCATION "FIT" THE ADJACENT SECTIONS WELL. EXCAVATION WAS NOT MADE AT THIS POINT BECAUSE OF PREVIOUS ROAD CONSTRUCTION. HURLEY CALLED FOR MOUND AND STONE PILE AT THIS CORNER IN VOL. 1 PAGE 27 OF ADAMS COUNTY SURVEYOR RECORDS.

2020 - PLS 2675 FOUND HARRISON 4"± BELOW THE ROAD SURFACE, 1 TIE, AND 1 WITNESS. THE MONUMENT AGREES WITH BOTH THE TIE AND WITNESS. ACCEPTED THE HARRISON AS THE CORNER LOCATION. SET 3 NEW TIES, MEASURED TO A FOUND RAILROAD SPIKE AND THE EXISTING TIE AND WITNESS.



LOCATION
 (INDICATE CORNER BY "X")

SEAL:



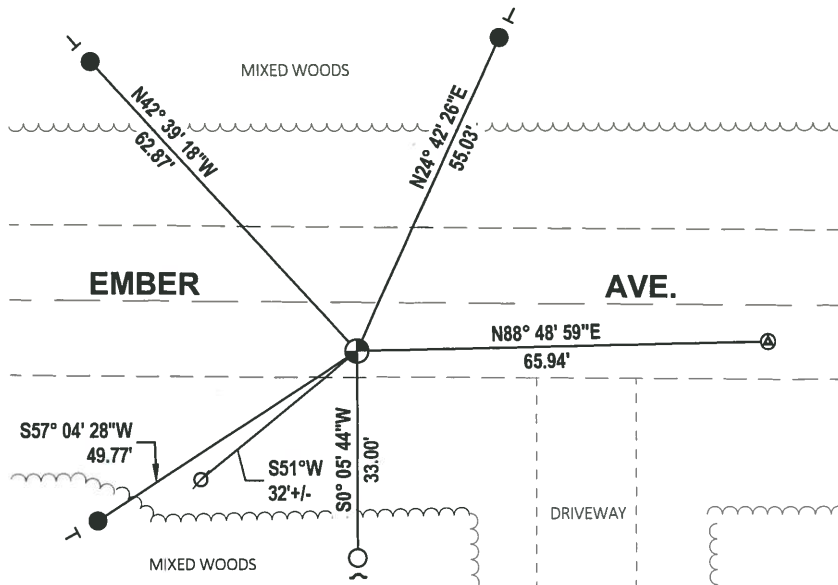
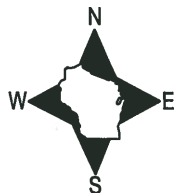
DATA SHOWN HERE ON THIS TIE SHEET IS CORRECT AND COMPLETE TO THE BEST OF MY KNOWLEDGE AND BELIEF.

PROFESSIONAL LAND SURVEYOR

DATE 11/3/2020

TIE SKETCH

NOTE: THE CORNER LANDS 8'± SOUTH OF EMBER AVE. CENTERLINE.

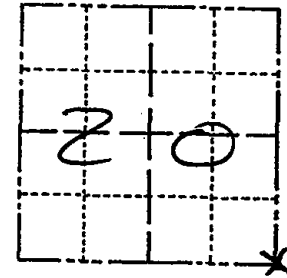


- SET 3/4" x 18" IRON REBAR, 1.50#/FT
- FOUND 3/4" IRON ROD
- ⊕ FOUND HARRISON MONUMENT
- ⊙ WITNESS POWER POLE
- ┘ STEEL FENCE POST
- └ VINYL "T" POST
- ⊙ FOUND RAILROAD SPIKE

Government Land Corner Certificate

Adams County
 TYPE OF MONUMENT: Harrison
 STATE PLANE COORDINATES: N _____
 E _____
 ELEVATION — M.S.L. DATUM: _____
 THETA ANGLE: _____
 FIELD BOOK: _____ PAGE _____
 DRAWN BY: NJ

CORNER NO. 85
 SECTION 20
 TOWN 16
 RANGE 7



LOCATION
 (Indicated by 'X')

BASIS FOR MONUMENT LOCATION

Show info such as: History of corner, with reference to Vol. and pg., dates, surveyor; exact description of monument replaced; if location computed, by taped or EDM traverse; landowner remarks, etc. (Use reverse side if necessary)

SEAL:



DATA SHOWN HERE ON
 CERTIFIED CORRECT:

Gregory P. Rhinehart
 Registered Land Surveyor

DATE: 11/5/79

The location of this corner was determined by doubling over the line between the SW corner of this section and the S½ corner of this section. This location "fit" the adjacent sections well. Excavation was not made at this point because of previous road construction. HURLEY called for mound and stone pile at this corner in Vol. 1 page 27 of Adams County surveyor records.

3-22-82 62-SS 010
 12-26-91 27-62 "

TIE SKETCH

Show at least four ties, also fence lines, roads, topo, size and type of witness trees' and if off road - best way to arrive at corner.

