

21
SECTION

16
TOWN

07
RANGE

ADAMS COUNTY

COUNTY CORNER NO: 87

ROMPORTOL ID: 41607210000

PUBLIC LAND SURVEY MONUMENT RECORD

TYPE OF MONUMENT: HARRISON (BROKEN-TOP)

ADAMS COUNTY COORDINATES, NAD 83 (2007)

N. 175363.333

E. 573322.468

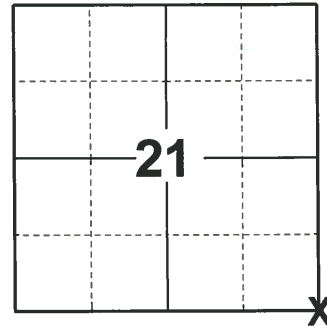
ELEVATION- - - - DATUM - - - -

FIELD WORK DATE: 10/01/2020

BASIS FOR MONUMENT LOCATION

1975 - PLS 1103 RAN EDM/TRANSIT TRAVERSE AROUND SECTIONS 27 AND 34, AND PARTS OF SECTION 26 AND 35. ESTABLISHED LOCATION OF CORNER BY RECONSTRUCTION OF SURVEY BY FRED ZIETLOW, RLS 922, IN SECTION 28.

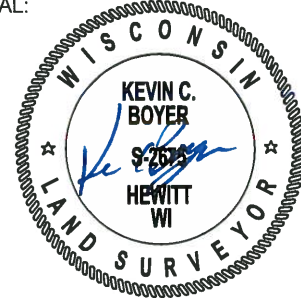
2020 - PLS 2675 FOUND HARRISON (BROKEN-TOP) 6"± BELOW THE GROUND AND 1 WITNESS. THE MONUMENT AGREES WITH THE WITNESS (SLOPE DISTANCE). ACCEPTED THE HARRISON (BROKEN-TOP) AS THE CORNER LOCATION. SET 4 NEW TIES AND MEASURED TO THE EXISTING WITNESS.



LOCATION

(INDICATE CORNER BY "X")

SEAL:



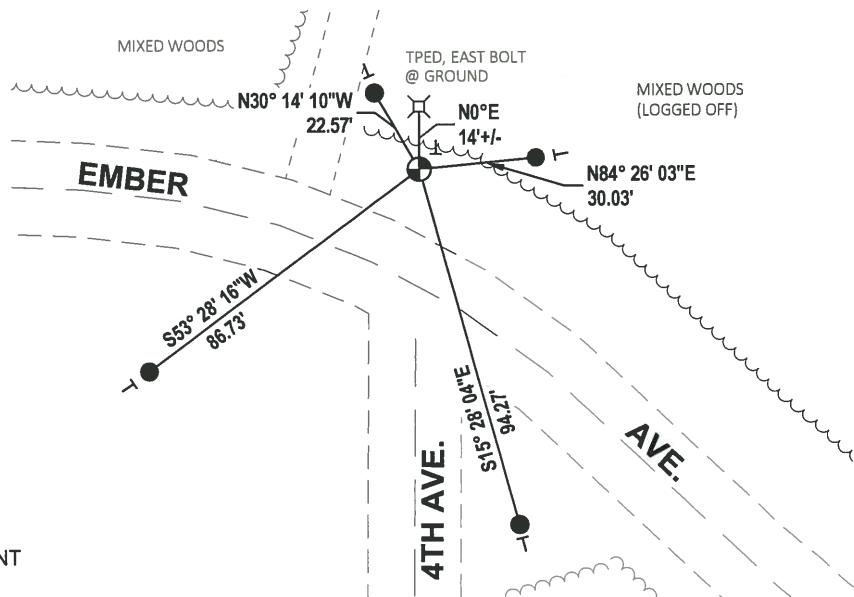
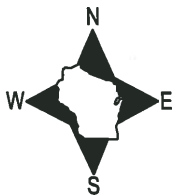
DATA SHOWN HERE ON THIS TIE SHEET IS CORRECT AND COMPLETE TO THE BEST OF MY KNOWLEDGE AND BELIEF.

PROFESSIONAL LAND SURVEYOR

DATE 11/3/2020

- TIE SKETCH

NOTE: THE CORNER LANDS 28'± NORTH OF EMBER AVE. CENTERLINE.



- SET 3/4" x 18" IRON REBAR, 1.50#/FT
- ⊕ FOUND HARRISON (BROKEN-TOP) MONUMENT
- VINYL "T" POST

ADAMS COUNTY

Survey Monument Record

TYPE OF MONUMENT: Harrison Standard

STATE PLANE COORDINATES: N _____

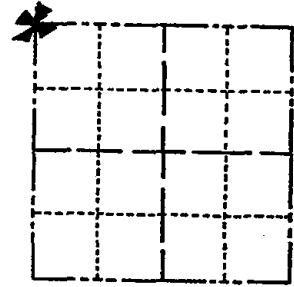
E _____

ELEVATION — M.S.L. DATUM: _____

THETA ANGLE: _____

FIELD BOOK: _____ PAGE _____

CORNER NO. 673 ⁽⁸⁷⁾
 SECTION 27
 TOWN 16 N
 RANGE 7 E



LOCATION
(Indicated by 'X')

SEAL:



BASIS FOR MONUMENT LOCATION

(Use reverse side if necessary)

Show info such as: History of corner, with reference to Vol. and pg, dates, surveyor; exact description of monument replaced; if location computed, by taped or EDM traverse; landowner remarks, etc.

Ran EDM/transit traverse around Sections 27 and 34, and parts of Section 26 and 35.

Established location of corner by re-construction of survey by Fred Zietlow, RLS 922, in Section 28.

CORNER	O.K.	3-31-77	GR-SS
"	"	3-22-82	"
"	"	12-9-86	"
"	"	12-26-91	KZ-GR
"	"	12-6-96	SS
"	"	12-28-01	ML

CERTIFIED CORRECT:

Dale C. Hagen
 Registered Land Surveyor
 DATE: 6/3/75

TIE SKETCH

OK: 6-11-07 - JG
 01-18-12 OK MS

(Show at least four ties)

