

## PUBLIC LAND SURVEY MONUMENT RECORD

TYPE OF MONUMENT: HARRISON  
 ADAMS COUNTY COORDINATES, NAD 83 (2007)

N. 175357.842

E. 575945.253

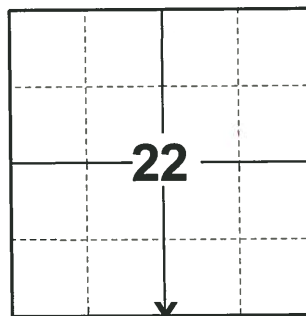
ELEVATION-        DATUM       

FIELD WORK DATE: 10/01/2020

### BASIS FOR MONUMENT LOCATION

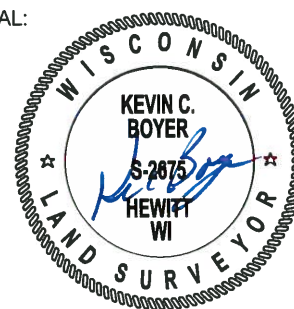
1975 - PLS 1103 RAN EDM/TRANSIT TRAVERSE AROUND SECTIONS 27 AND 34, AND PARTS OF SECTIONS 26 AND 35. RE-LOCATED NORTH QUARTER CORNER 33 FEET NORTH OF PLATTED AREA TO THE SOUTH AND ON FENCE LINE TO THE NORTH. THIS POINT FIT THE ORIGINAL NOTE DISTANCE VERY WELL.

2020 - PLS 2675 FOUND HARRISON 8"± BELOW THE ROAD SURFACE AND 1 TIE. THE MONUMENT AGREES WITH THE EXISTING TIE. ACCEPTED THE HARRISON AS THE CORNER LOCATION. SET 3 NEW TIES AND MEASURED TO THE EXISTING TIE.



**LOCATION**  
 (INDICATE CORNER BY "X")

SEAL:



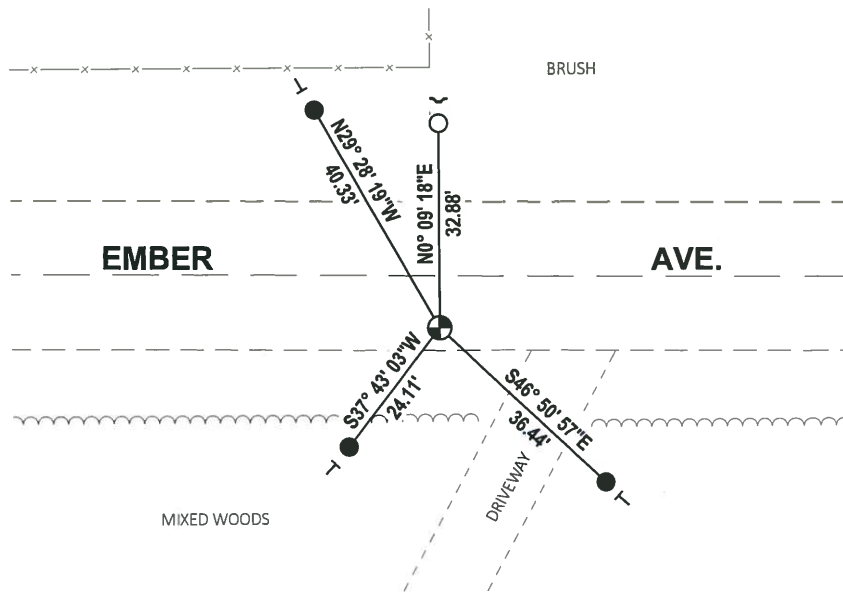
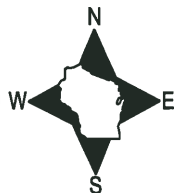
DATA SHOWN HERE ON THIS TIE SHEET IS CORRECT AND COMPLETE TO THE BEST OF MY KNOWLEDGE AND BELIEF.

PROFESSIONAL LAND SURVEYOR

DATE 11/3/2020

### - TIE SKETCH

NOTE: THE CORNER LANDS 8.3'± SOUTH OF EMBER AVE. CENTERLINE.



- SET 3/4" x 18" IRON REBAR, 1.50#/FT
- FOUND 3/4" IRON ROD
- ⊕ FOUND HARRISON MONUMENT
- ↵ STEEL FENCE POST
- | VINYL "T" POST

ADAMS COUNTY

Survey Monument Record

TYPE OF MONUMENT: Harrison Standard

STATE PLANE COORDINATES: N \_\_\_\_\_

E \_\_\_\_\_

ELEVATION — M.S.L. DATUM: \_\_\_\_\_

THETA ANGLE: \_\_\_\_\_

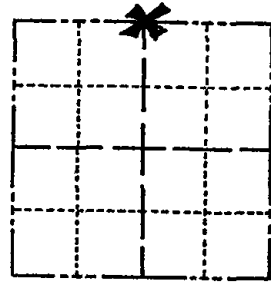
FIELD BOOK: \_\_\_\_\_ PAGE \_\_\_\_\_

CORNER NO. 672 88

SECTION 27

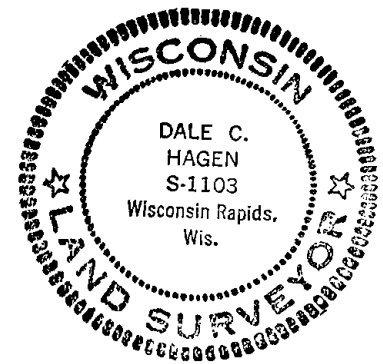
TOWN 16 N

RANGE 7 E



LOCATION  
(Indicated by 'X')

SEAL:



BASIS FOR MONUMENT LOCATION

(Use reverse side if necessary)

Show info such as: History of corner, with reference to Vol. and pg, dates, surveyor; exact description of monument replaced; if location computed, by taped or EDM traverse; landowner remarks, etc.

Ran EDM/transit traverse around Sections 27 and 34, and parts of Sections 26 and 35.

Re-located North Quarter corner 33 feet north of platted area to the South and on fence line to the North. This point fit the original note distance very well.

|        |      |          |       |
|--------|------|----------|-------|
| CORNER | O.K. | 3-31-77  | GR-SS |
| "      | "    | 3-22-82  | "     |
| "      | "    | 12-9-86  | "     |
| "      | "    | 12-26-91 | KZ-GR |
| "      | "    | 12-6-96  | SS    |
| "      | "    | 1-02-02  | ML    |

CERTIFIED CORRECT:

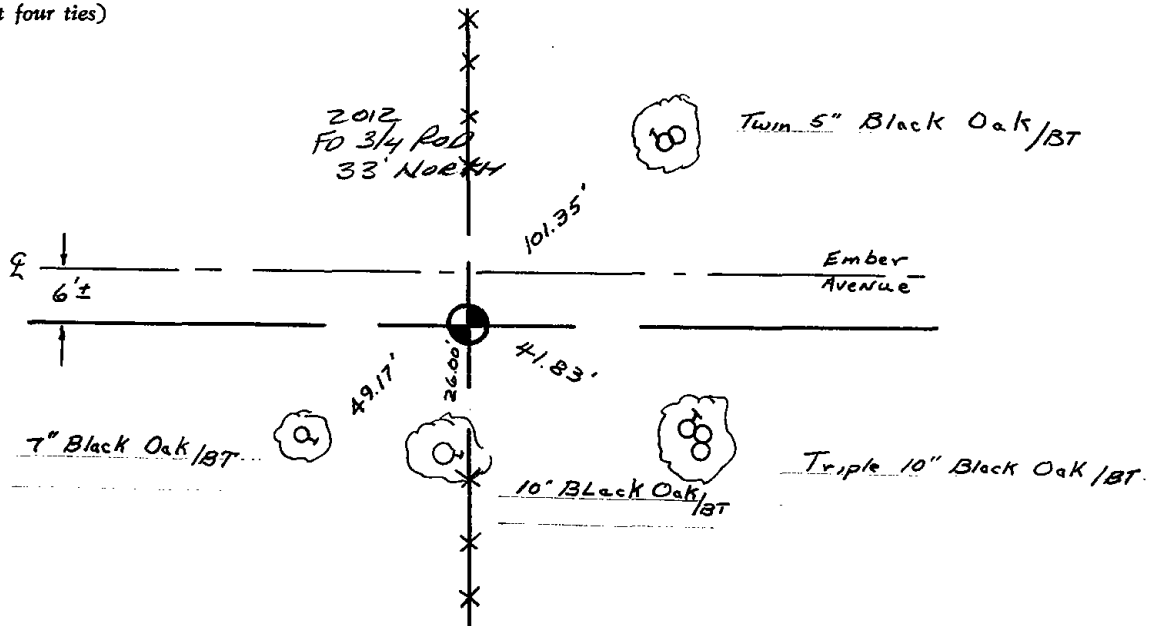
Dale C. Hagen  
Registered Land Surveyor

DATE: 6/3/75

TIE SKETCH OK, 6-11-07-JG

OK 1-18-12 MS

(Show at least four ties)



# ADAMS COUNTY

## Survey Monument Record

TYPE OF MONUMENT: Harrison Standard

STATE PLANE COORDINATES: N \_\_\_\_\_

E \_\_\_\_\_

ELEVATION — M.S.L. DATUM: \_\_\_\_\_

THETA ANGLE: \_\_\_\_\_

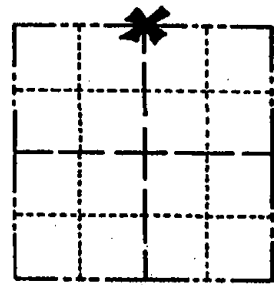
FIELD BOOK: \_\_\_\_\_ PAGE \_\_\_\_\_

CORNER NO. 672 <sup>98</sup>

SECTION 27

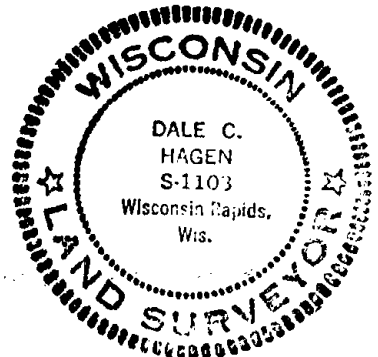
TOWN 16 N

RANGE 7 E



LOCATION  
(Indicated by 'X')

SEAL:



### BASIS FOR MONUMENT LOCATION

(Use reverse side if necessary)

Show info such as: History of corner, with reference to Vol. and pg. dates, surveyor; exact description of monument replaced; if location computed, by taped or EDM traverse; landowner remarks, etc.

Ran EDM/transit traverse around Sections 27 and 34, and parts of Sections 26 and 35.

Re-located North Quarter corner 33 feet north of platted area to the South and on fence line to the North. This point fit the original note distance very well.

CORNER O.K. 3-31-77 GRS  
 " " 3-22-82 "  
 " " June 14 '83 Ken Carlson

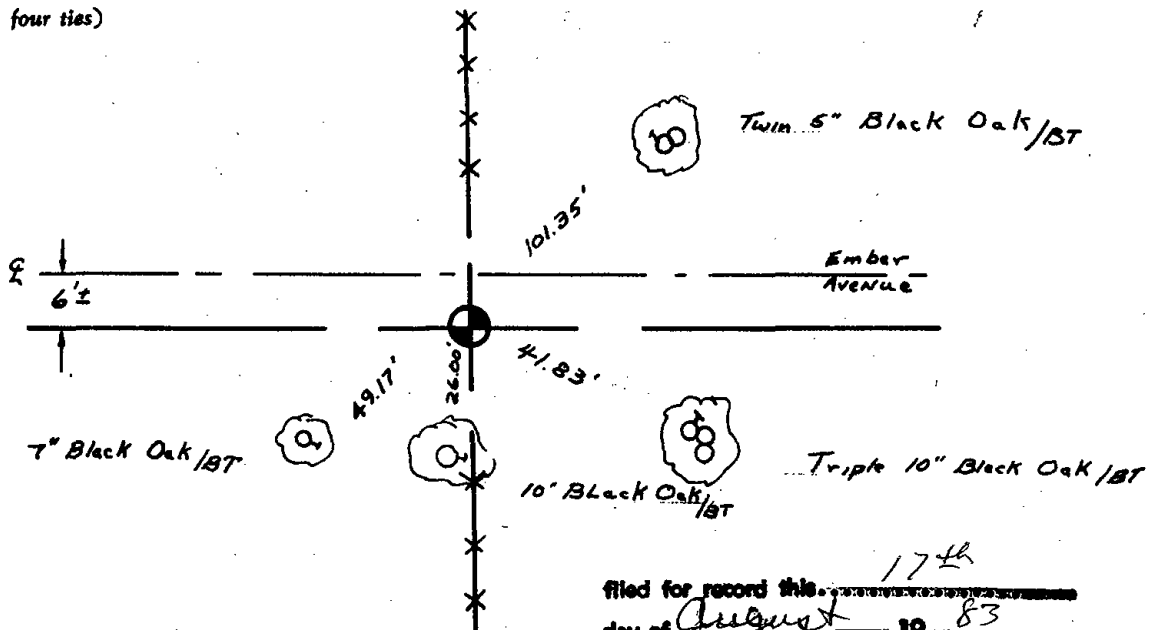
CERTIFIED CORRECT:

Dale C. Hagen  
 Registered Land Surveyor

DATE: 6/3/75

### TIE SKETCH

(Show at least four ties)



filed for record this 17th  
 day of August 1983  
 per 59.60 Wisconsin Statutes.

Phenhart  
 ADAMS COUNTY SURVEYOR

2004

THE UNIVERSITY OF CHICAGO  
LIBRARY  
540 EAST 57TH STREET  
CHICAGO, ILLINOIS 60637  
TEL: 773-936-3200  
WWW.CHICAGO.EDU